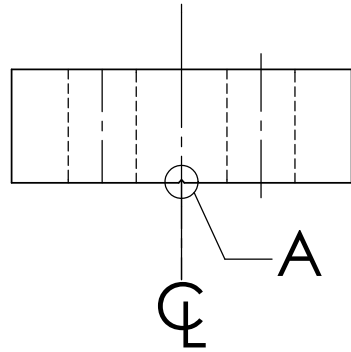


NOTES: (UNLESS OTHERWISE SPECIFIED)

1. DIMENSIONS IN INCHES
2. REMOVE ALL SHARP EDGES, R.02 MIN
3. ALL MACHINING FLUIDS SHALL BE WATER SOLUBLE AND FREE OF SULFUR, CHLORINE AND SILICONE, SUCH AS CINCINNATI MILACRON'S CIMTECH 410 (STAINLESS STEEL)

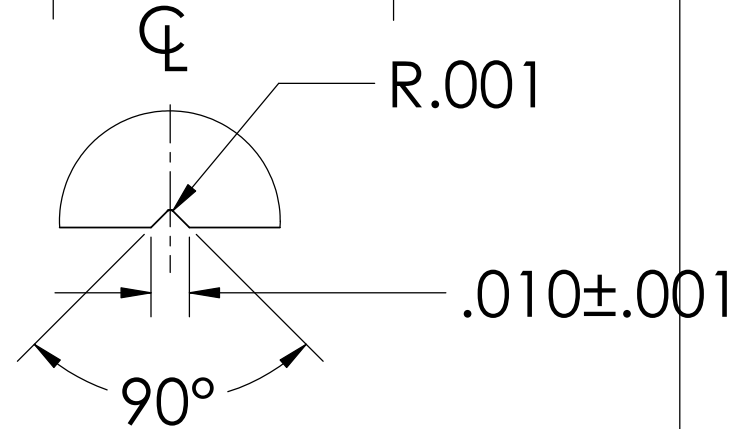
REV.	DATE	
A	24TH JUNE 2004	F040303-00



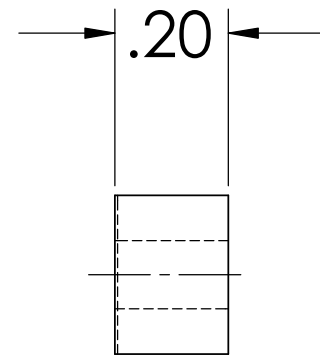
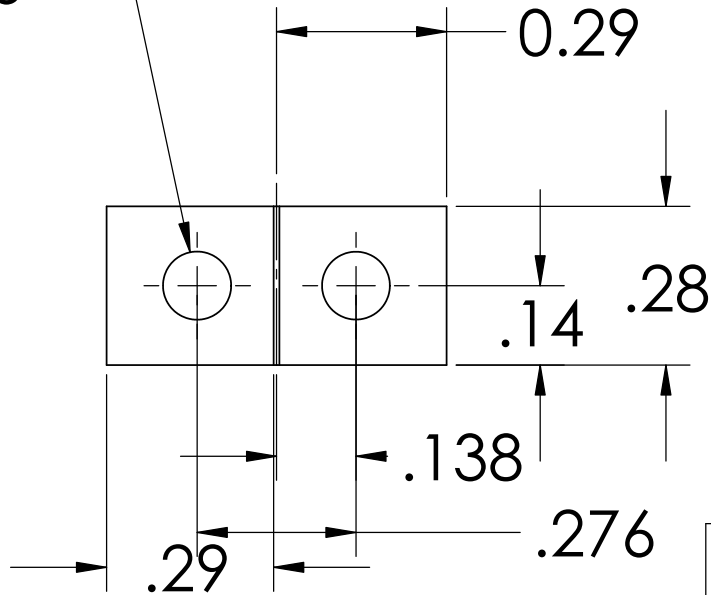
DETAIL A
SCALE 20 : 1



D030047_clamp_Massjig_withgroove.step



2X ϕ .136



DIMENSIONS ARE IN INCHES		NAME	DATE	CALIFORNIA INSTITUTE OF TECHNOLOGY MASSACHUSETTS INSTITUTE OF TECHNOLOGY
TOLERANCES: .XX ±0.01 .XXX ±0.005 ANGULAR ±1°		DRAWN CIT	03/21/02	
MATERIAL 6061-T6-AL		CHECKED		SYSTEM ADVANCED LIGO
FINISH				SUB-SYSTEM SUS
		COMMENTS:		NEXT ASSY MC: WIRE JIG
				PART NAME CLAMP MASS JIG (WITH GROOVE)
		SIZE A	DWG. NO. D030047	REV. A
		SCALE:		SHEET 1 OF 1