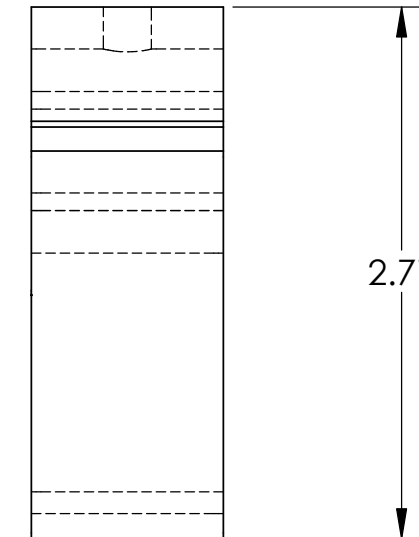
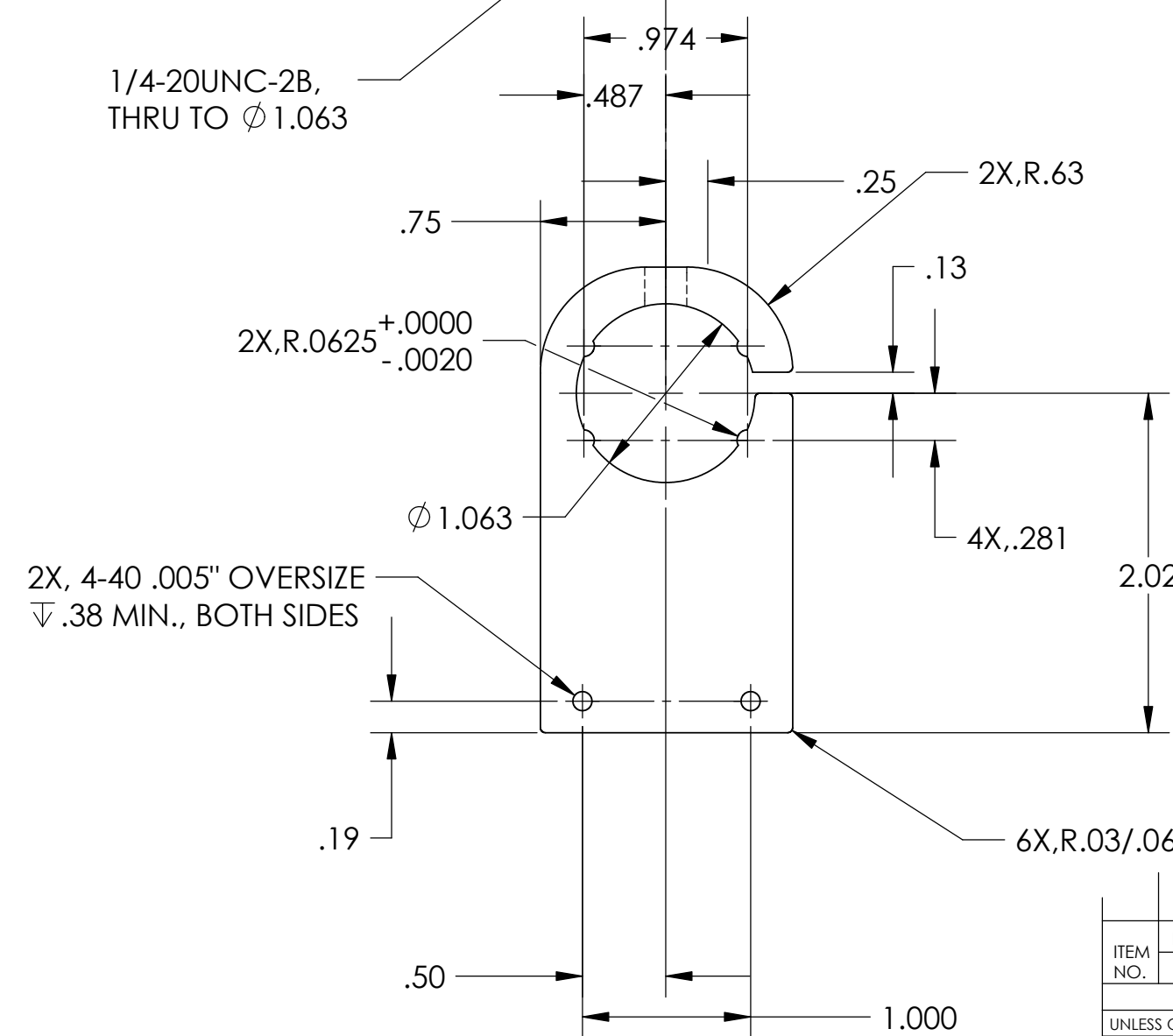
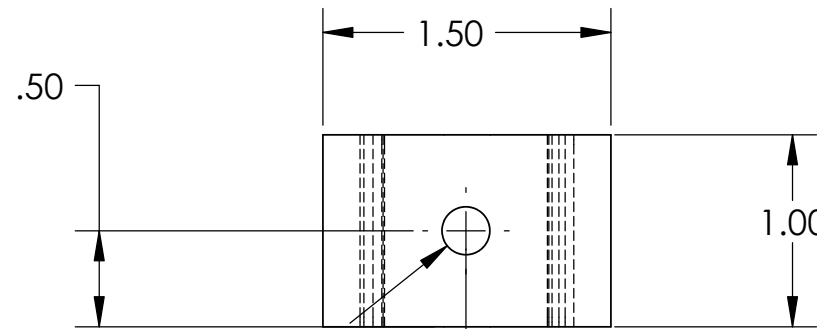


NOTES: (UNLESS OTHERWISE SPECIFIED)
 1. DIMENSIONS IN INCHES.
 2. BREAK ALL SHARP EDEGS.
 3. ALL MACHINING FLUIDS SHALL BE WATER SOLUBLE AND FREE OF SULFUR, CHLORINE AND SILICONE, SUCH AS CINCINNATI MILACRON'S CIMTECH 410 (STAINLESS STEEL.)

| REV. | DATE | DCN # | DRAWING TREE # |
|------|------|------------|----------------|
| A | 7/04 | E040303-00 | E030507-A |
| | | | |
| | | | |



D030018_LIGO1_SENSORACTUATOR_BRACKET_3.step



| ITEM NO. | REQ. | SPARE | TOT. | PART NUMBER | DESCRIPTION | SUPPLIER |
|---|----------|-------|------|-------------|-------------|---|
| | QUANTITY | | | | | |
| UNLESS OTHERWISE SPECIFIED: DIMENSIONS ARE IN INCHES | | | | | | |
| TOLERANCES: .XX ±:0.01 .XXX ±:0.005 ANGULAR: ±0.5 DEG. | | | | DATE | NAME | CALIFORNIA INSTITUTE OF TECHNOLOGY MASSACHUSETTS INSTITUTE OF TECHNOLOGY SYSTEM ADVANCED LIGO SUB-SYSTEM SUSPENSIONS NEXT ASSY MC SUSPENSION PART NAME: LIGO1 SENSOR/ACTUATOR BRACKET 3 |
| DRAWN | | | | 8/02 | J.Romie | |
| CHECKED | | | | | | |
| MATERIAL 6061-T6 ALUM. | | | | COMMENTS: | | SIZE B DWG. NO. D030018 REV A |
| FINISH NONE | | | | | | SCALE: N/A SHEET 1 OF 1 |