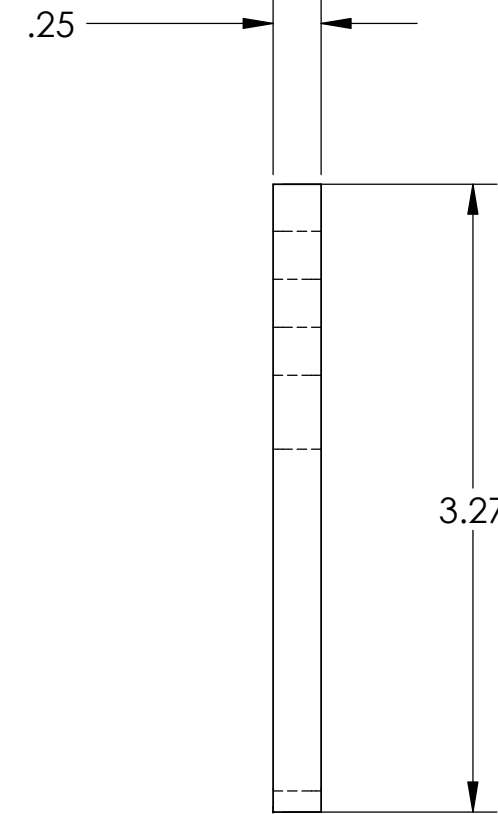
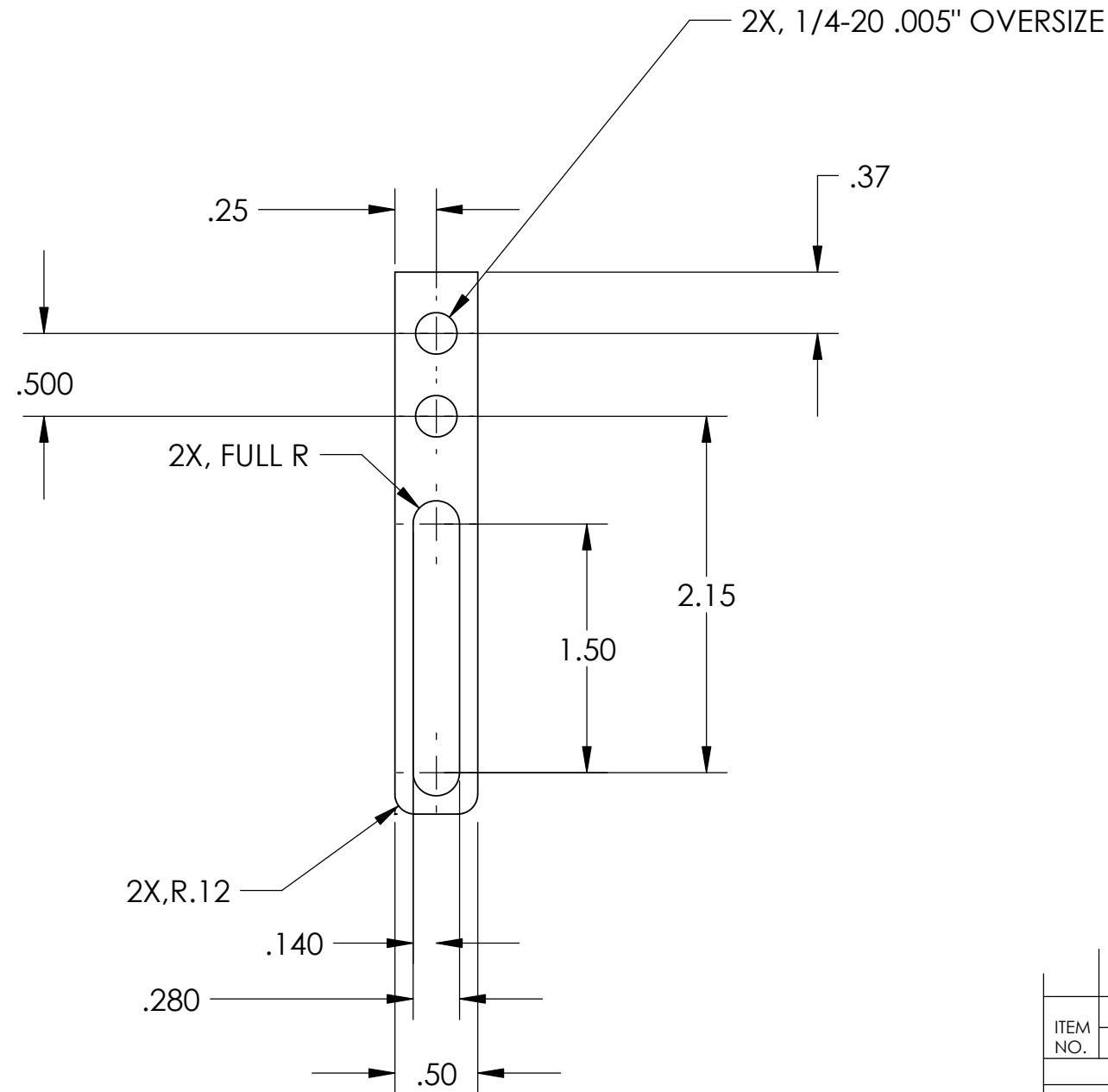



NOTES: (UNLESS OTHERWISE SPECIFIED)
 1. DIMENSIONS IN INCHES.
 2. BREAK ALL SHARP EDGES.
 3. ALL MACHINING FLUIDS SHALL BE WATER SOLUBLE AND FREE OF SULFUR, CHLORINE AND SILICONE, SUCH AS CINCINNATI MILACRON'S CIMTECH 410 (STAINLESS STEEL.)

REV.	DATE	DCN #	DRAWING TREE #
A	7/04	E040303-00	E030507-A



D030014_Crossbar_Bracket_Two.step



ITEM NO.	REQ.	SPARE	TOT.	PART NUMBER	DESCRIPTION	SUPPLIER	
	QUANTITY						
UNLESS OTHERWISE SPECIFIED:							
DIMENSIONS ARE IN INCHES				DATE	NAME	 CALIFORNIA INSTITUTE OF TECHNOLOGY MASSACHUSETTS INSTITUTE OF TECHNOLOGY	
TOLERANCES:				DRAWN	1/03		J.ROMIE
.XX ±:0.01				CHECKED			
.XXX ±:0.005							
ANGULAR: ±0.5 DEG							
MATERIAL				PARTS LIST			
ALUM 6061-T6				SYSTEM ADVANCED LIGO			
FINISH				SUB-SYSTEM SUSPENSIONS			
NONE				NEXT ASSY MODE CLEANER SUSPENSION			
COMMENTS:				PART NAME CROSSBAR BRACKET TWO			
				SIZE	DWG. NO.	REV	
				B	D030014	A	
				SCALE: 1/1	SHEET 1 OF 1		