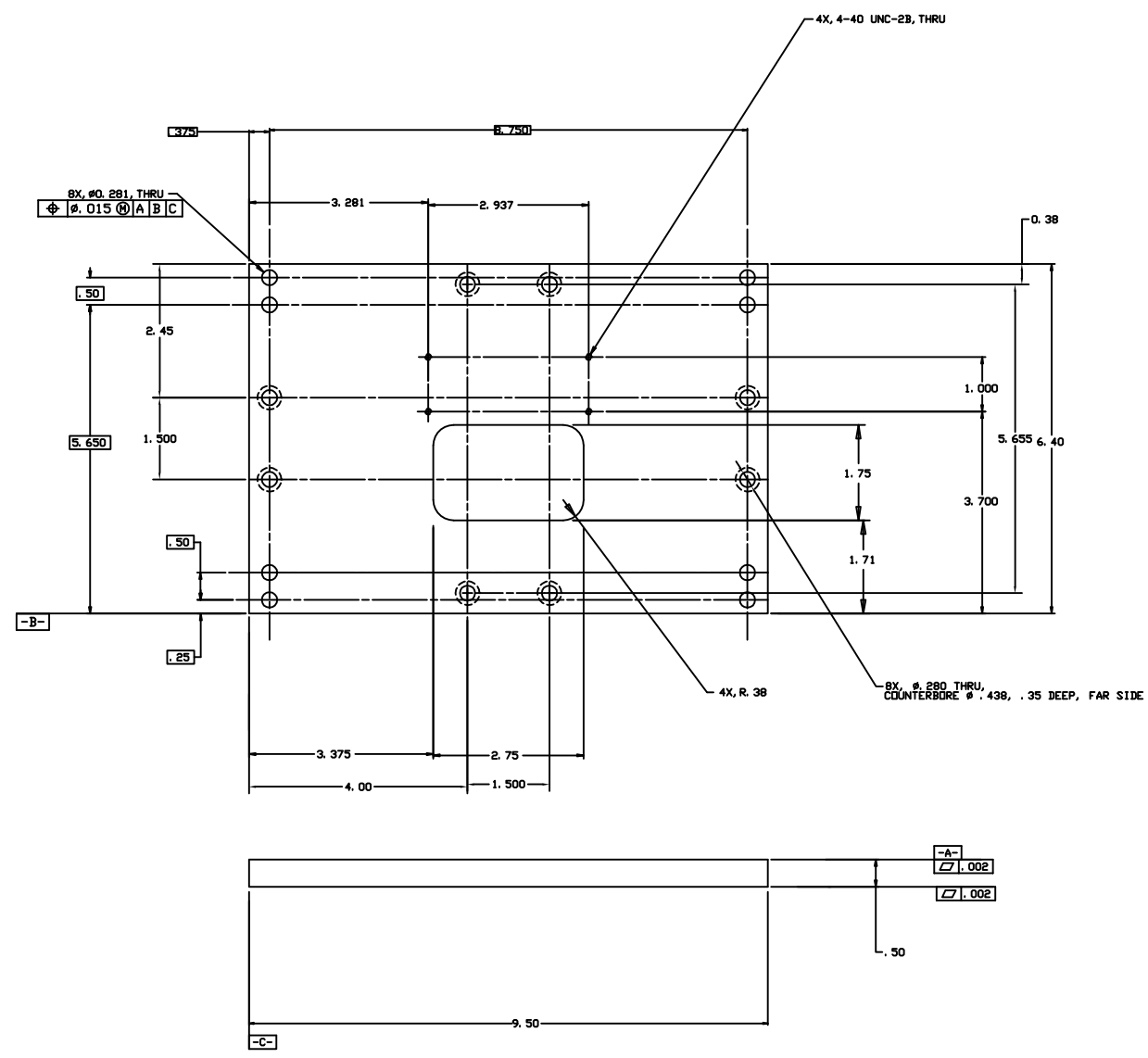


1 2 3 4 5 6 7 8

NOTES: (UNLESS OTHERWISE SPECIFIED)
 1. DIMENSIONS IN INCHES.
 2. BREAK ALL SHARP EDGES.
 3. ALL MACHINING FLUIDS SHALL BE WATER SOLUBLE AND FREE OF SULFUR, CHLORINE AND SILICONE, SUCH AS CINCINNATI MILACRON'S CIMTECH 410 (STAINLESS STEEL.)

REV	DATE	DRAWN BY	CHECKED	SEC	COM/DESCRIPTION
A	9/03	J. RDMIE			E030462/INITIAL RELEASE



UNLESS OTHERWISE SPECIFIED DIMENSIONS ARE IN INCHES FRACTIONS DECIMALS ANGLES 0. XX±0.01 0. XX±0.005 ANGLES±0.5° DO NOT SCALE DRAWING		CONFORMANS J. RDMIE CHECKED	DATE 11/02	TITLE GIN GIN ITM TOP PLATE
NEXT ASSEMBLY D020662	MATERIAL ALUM 6061-T6	ISSUED	SIZE FROM NO. E SCALE 1/1	REV FROM NO. A D020681
FILE LOCATION /home/dcc/docs/D020681.pdf		SHEET 1 OF 1		REV A

1 2 3 4 5 6 7 8