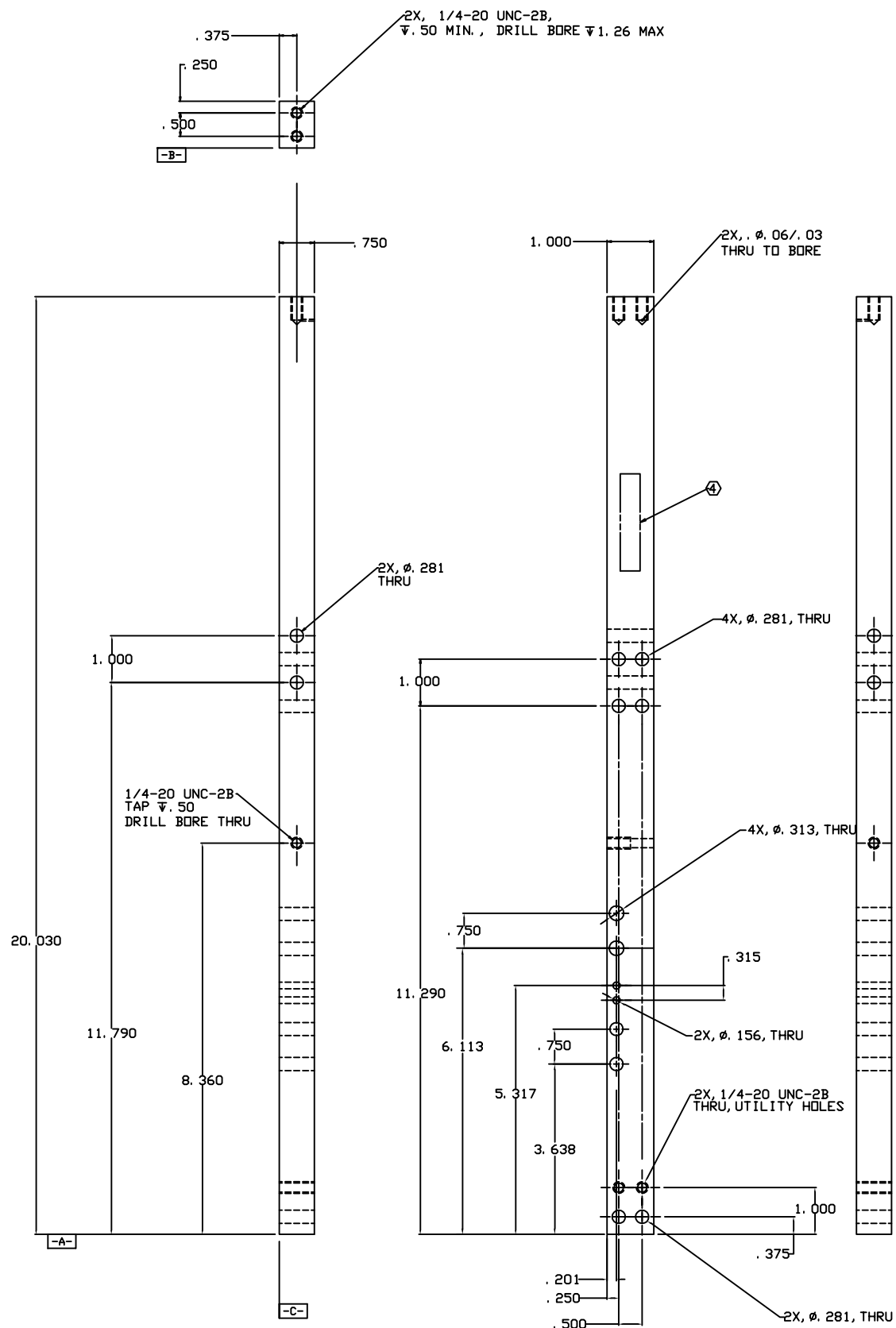


NOTES: (UNLESS OTHERWISE SPECIFIED)

1. DIMENSIONS IN INCHES.
2. BREAK ALL SHARP EDGES.
3. ALL MACHINING FLUIDS SHALL BE WATER SOLUBLE AND FREE OF SULFUR, CHLORINE AND SILICONE, SUCH AS CINCINNATI MILACRON'S CIMTECH 410 (STAINLESS STEEL.)
4. ETCH OR STAMP THE DRAWING PART NUMBER ON NOTED SURFACE OF PART AND THEN A THREE DIGIT SERIAL NUMBER. SERIAL NUMBERS START AT 001 FOR THE FIRST PART AND PROCEED CONSEQUETIVELY. USE .07" HIGH CHARACTERS. EXAMPLE: D020668-A 001.

REV	DATE	DRAWN BY	CHECKED	SEC	CON/DESCRIPTION
A	9/03	J. ROMIE			E030462/INITIAL RELEASE



REV	DATE	DRAWN BY	CHECKED	SEC	CON/DESCRIPTION
A	9/03	J. ROMIE			E030462/INITIAL RELEASE

REV	DATE	DRAWN BY	CHECKED	SEC	CON/DESCRIPTION
A	9/03	J. ROMIE			E030462/INITIAL RELEASE

REV	DATE	DRAWN BY	CHECKED	SEC	CON/DESCRIPTION
A	9/03	J. ROMIE			E030462/INITIAL RELEASE

REV	DATE	DRAWN BY	CHECKED	SEC	CON/DESCRIPTION
A	9/03	J. ROMIE			E030462/INITIAL RELEASE

REV	DATE	DRAWN BY	CHECKED	SEC	CON/DESCRIPTION
A	9/03	J. ROMIE			E030462/INITIAL RELEASE

REV	DATE	DRAWN BY	CHECKED	SEC	CON/DESCRIPTION
A	9/03	J. ROMIE			E030462/INITIAL RELEASE

REV	DATE	DRAWN BY	CHECKED	SEC	CON/DESCRIPTION
A	9/03	J. ROMIE			E030462/INITIAL RELEASE

REV	DATE	DRAWN BY	CHECKED	SEC	CON/DESCRIPTION
A	9/03	J. ROMIE			E030462/INITIAL RELEASE

REV	DATE	DRAWN BY	CHECKED	SEC	CON/DESCRIPTION
A	9/03	J. ROMIE			E030462/INITIAL RELEASE

REV	DATE	DRAWN BY	CHECKED	SEC	CON/DESCRIPTION
A	9/03	J. ROMIE			E030462/INITIAL RELEASE

REV	DATE	DRAWN BY	CHECKED	SEC	CON/DESCRIPTION
A	9/03	J. ROMIE			E030462/INITIAL RELEASE

REV	DATE	DRAWN BY	CHECKED	SEC	CON/DESCRIPTION
A	9/03	J. ROMIE			E030462/INITIAL RELEASE

REV	DATE	DRAWN BY	CHECKED	SEC	CON/DESCRIPTION
A	9/03	J. ROMIE			E030462/INITIAL RELEASE

REV	DATE	DRAWN BY	CHECKED	SEC	CON/DESCRIPTION
A	9/03	J. ROMIE			E030462/INITIAL RELEASE

REV	DATE	DRAWN BY	CHECKED	SEC	CON/DESCRIPTION
A	9/03	J. ROMIE			E030462/INITIAL RELEASE