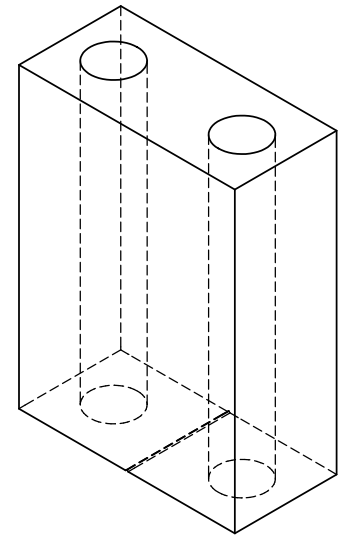
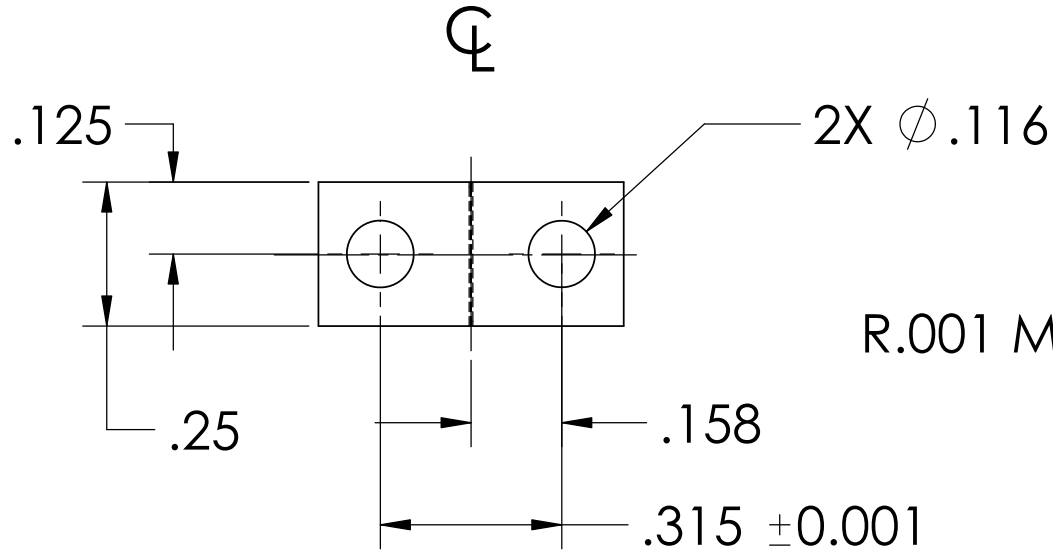


NOTES: (UNLESS OTHERWISE SPECIFIED)

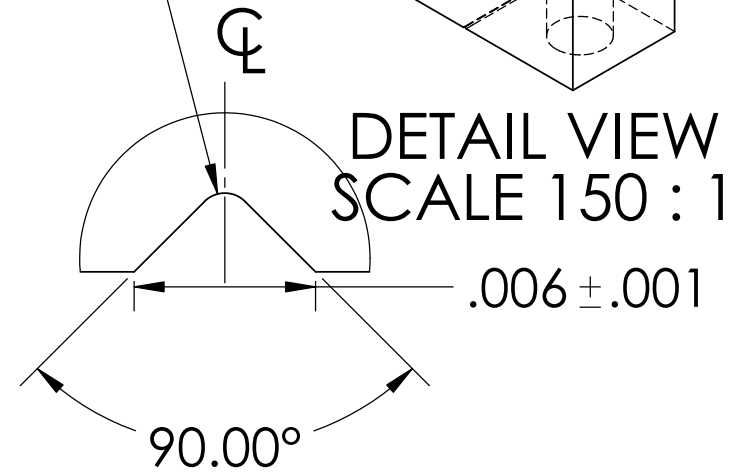
1. DIMENSIONS IN INCHES

2. ALL MACHINING FLUIDS SHALL BE WATER SOLUBLE AND FREE OF SULFUR, CHLORINE AND SILICONE, SUCH AS CINCINNATI MILACRON'S CIMTECH 410 (STAINLESS STEEL)

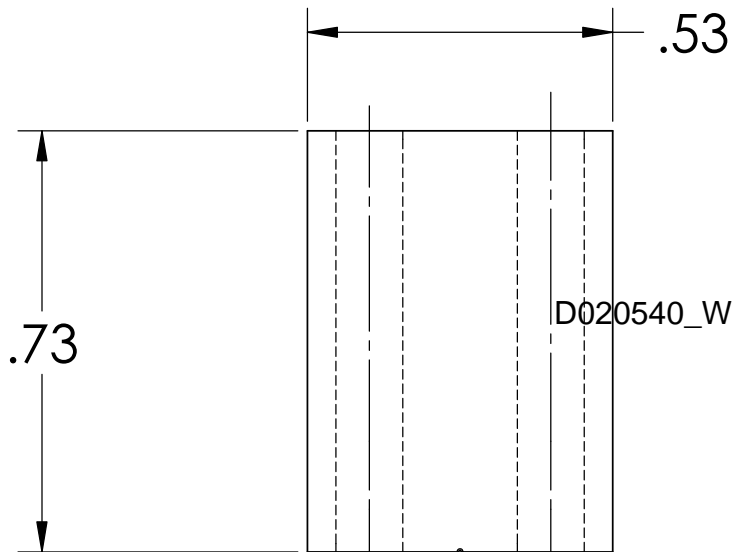
REV.	DATE	
A	24TH JUNE 2004	E040303-00



R.001 MAX




DETAIL VIEW
SCALE 150 : 1



D020540_WireStart_MatchedHeight_Groovedclamp.step

VIEW



DIMENSIONS ARE IN INCHES		NAME	DATE	 CALIFORNIA INSTITUTE OF TECHNOLOGY MASSACHUSETTS INSTITUTE OF TECHNOLOGY	
TOLERANCES: .XX ±0.01 .XXX ±0.005 ANGULAR ±1°		DRAWN	DM		07/16
MATERIAL		CHECKED		SYSTEM	ADVANCED LIGO
6061-T6-Al				SUB-SYSTEM	SUS
FINISH				NEXT ASSY	MC: WIRE JIG
		COMMENTS:		PART NAME	WIRE START MATCHED HEIGHT GROOVED CLAMP
		SIZE	DWG. NO.	REV.	
		A	D020540	A	
		SCALE: NTS		SHEET 1 OF 1	