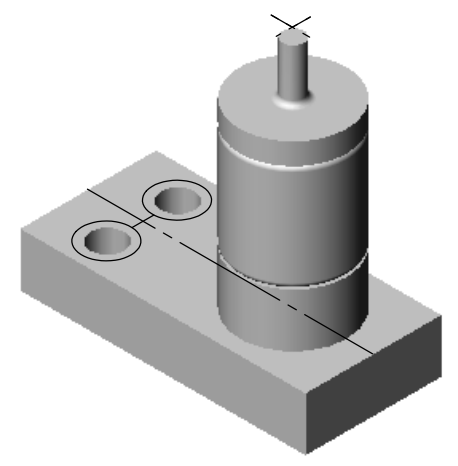
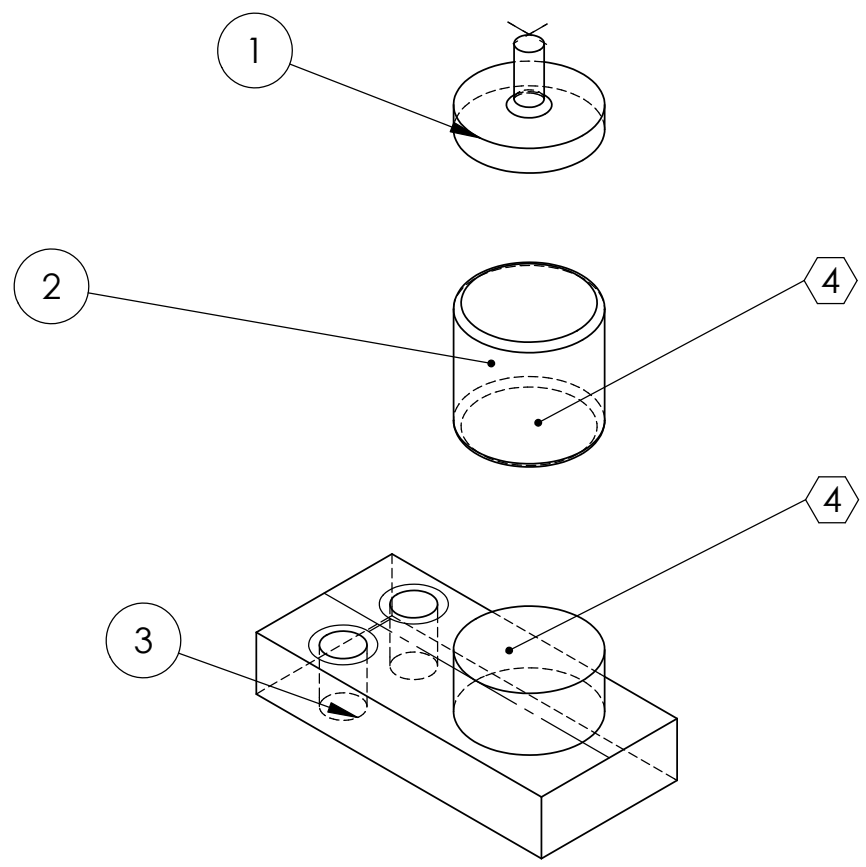
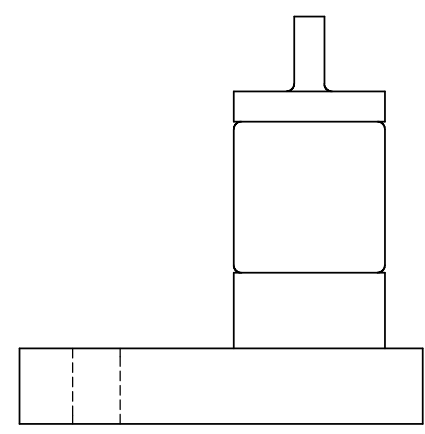
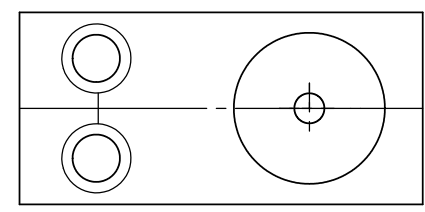


8 7 6 5 4 3 2 1

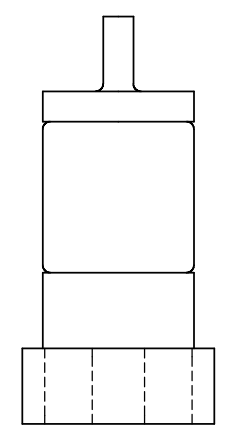
REV.	DATE	DCN #	DRAWING TREE #
A	24 JUNE 2004	E040303-00	


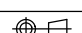
D
C
B
A

D
C
B
A



D020532_Assembly_magnetforpitch.step



NOTES: (UNLESS OTHERWISE SPECIFIED)		PARTS LIST		 CALIFORNIA INSTITUTE OF TECHNOLOGY MASSACHUSETTS INSTITUTE OF TECHNOLOGY	
1. DIMENSIONS IN INCHES.		NAME	DATE		
2. REMOVE ALL SHARP EDGES, R.02 MIN.		DRAWN	CIT	11/01/02	
3. ALL MACHINING FLUIDS SHALL BE WATER SOLUBLE AND FREE OF SULFUR, CHLORINE AND SILICONE, SUCH AS CINCINNATI MILACRON'S CIMTECH 410 (STAINLESS STEEL)		CHECKED			
④ THE MAGNET, FLAG AND BRIDGE ARE BONDED TOGETHER USING VACSEAL, PRIOR TO BONDING THE SURFACES ARE SANDED WITH 600 GRIT SAND PAPER.					
		DIMENSIONS ARE IN INCHES		SYSTEM ADVANCED LIGO	
		TOLERANCES:		SUB-SYSTEM SUS	
		.XX ± 0.01		NEXT ASSY MC: UPPER MASS	
		.XXX ± 0.005		PART NAME ASSEMBLY MAGNET AND FLAG (FOR PITCH)	
		ANGULAR ± 0.5 °		SIZE A DWG. NO. D020532 REV. A	
		MATERIAL		SCALE: NTS PROJECTION:  SHEET 1 OF 1	
		FINISH			

8 7 6 5 4 3 2 1

FILE NAME/LOCATION: