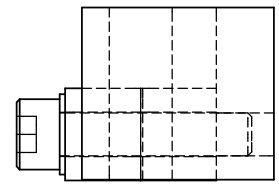
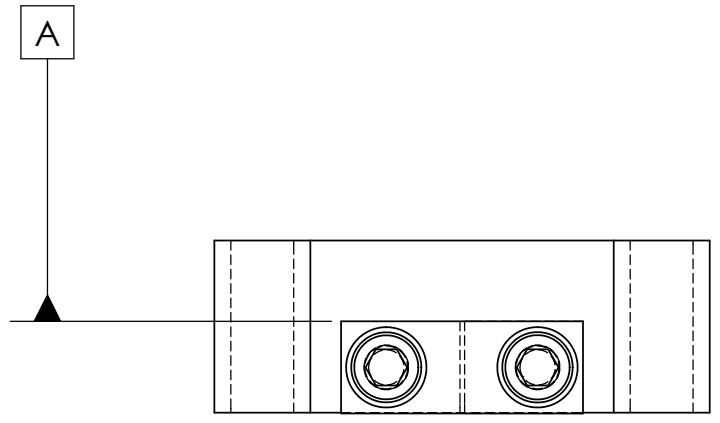
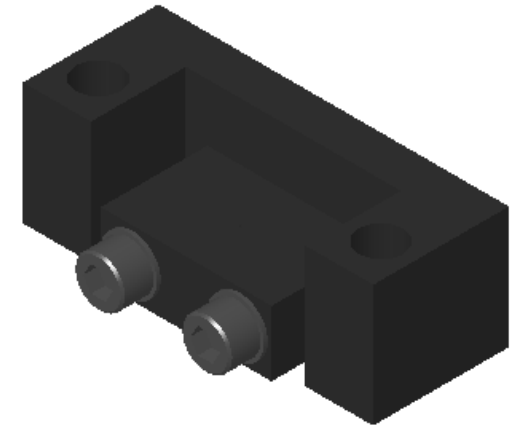
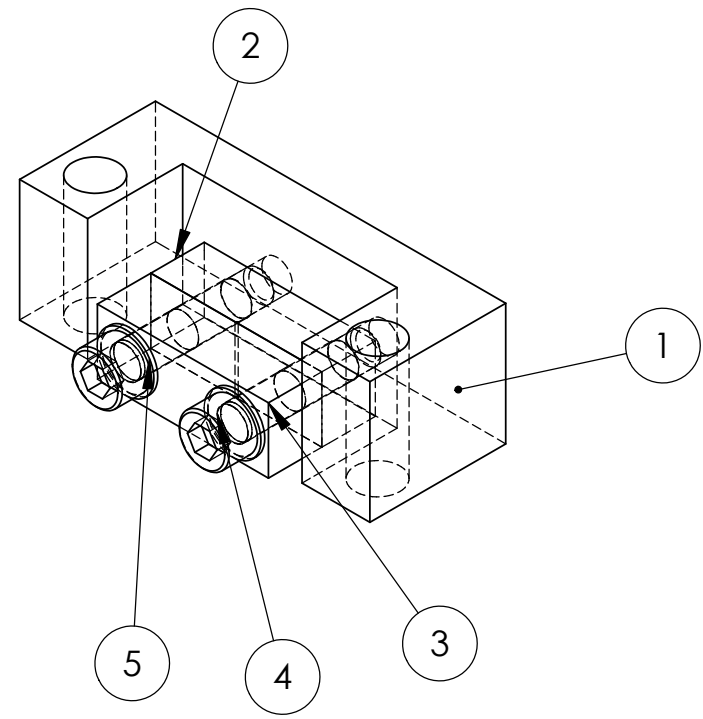
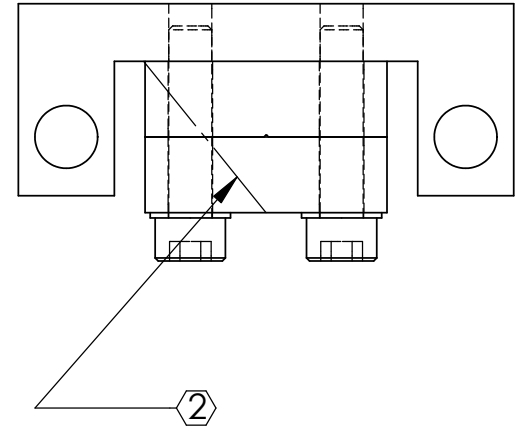



REV.	DATE	DCN #	DRAWING TREE #
A	24th JUNE 2004	E040303-00	



ITEM NO	REQ.	SPARE	TOT.	PART NUMBER	DESCRIPTION	MATERIAL
5	2	2	4		FLAT WASHERS NAS 620-C4L (OR EQUIV.)	300 SSSL
4	2	2	4		SST SOCKET HEAD CAP SCREW #4-40 UNC-3A X 0.5 LONG	300 SSSL
3	1	1	2	D020139	UPPER MASS WIRE CLAMP PLATE	300 SSSL
2	1	1	2	D020309	UPPER MASS WIRE CLAMP PLATE (WITH GROOVE)	300 SSSL
1	1	1	2	D020481	UPPER MASS C CLAMP	6061-T6-Al

D020499_Assembly_UpperWireClamp with PitchAdjustment.step



NOTES: (UNLESS OTHERWISE SPECIFIED)		NAME	DATE	 CALIFORNIA INSTITUTE OF TECHNOLOGY MASSACHUSETTS INSTITUTE OF TECHNOLOGY
1. FLY CUT DATUM -A- SURFACE TO ACHIEVE FLATNESS OF .001		DRAWN	CIT	
② SCRIBE OR ETCH LINE APPROX AS SHOWN .02 DEEP .02 WIDE AFTER FLY CUTTING AND PRIOR TO DISASSEMBLY		CHECKED		
DIMENSIONS ARE IN INCHES TOLERANCES:		SYSTEM ADVANCED LIGO SUB-SYSTEM SUS NEXT ASSY MC: UPPERMASS PART NAME UPPER WIRE CLAMP with PITCH ADJUSTMENT		
.XX ± 0.01 .XXX ± 0.005 ANGULAR ± 0.5 °				
SIZE	DWG. NO.	REV.		
B	D020499	A		
SCALE: NTS	PROJECTION:	SHEET 1 OF 1		