

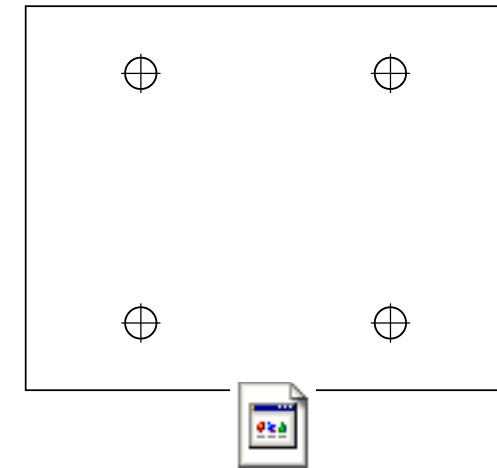
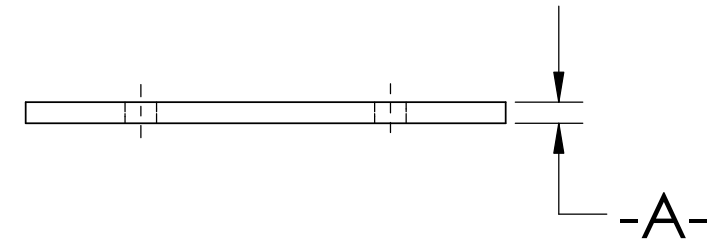
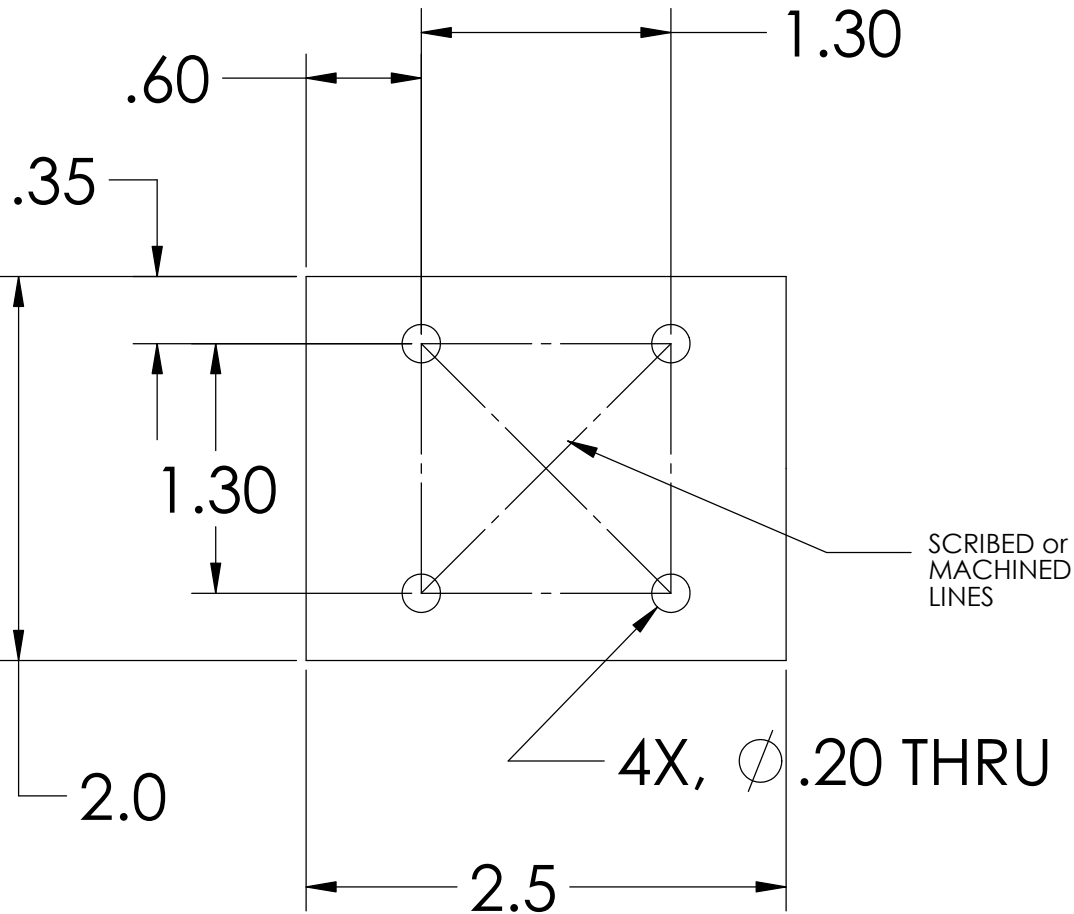
NOTES: (UNLESS OTHERWISE SPECIFIED)

1. DIMENSIONS IN INCHES

2. REMOVE ALL SHARP EDGES, R.02 MIN


3. ALL MACHINING FLUIDS SHALL BE WATER SOLUBLE AND FREE OF SULFUR, CHLORINE AND SILICONE, SUCH AS CINCINNATI MILACRON'S CIMTECH 410 (STAINLESS STEEL)

REV.	DATE	DCN #	DRAWING TREE #
A	24 JUNE 2004	E040303-00	



D020494_ALIGNMENT_TARGET.step

NOTE:
-A- THICKNESS and MATERIAL
CHOSEN BY MATERIAL AVAILABLE,
(RANGE 0.05 - 0.15 inch)

DIMENSIONS ARE IN INCHES		NAME	DATE	 CALIFORNIA INSTITUTE OF TECHNOLOGY MASSACHUSETTS INSTITUTE OF TECHNOLOGY
TOLERANCES: .XX ±0.01 .XXX ±0.005 ANGULAR ±1°		CIT/RJ	05/02	
MATERIAL		CHECKED		SYSTEM
Acrylic				SUB-SYSTEM
FINISH		COMMENTS:		MC: MAGNET & COIL
				PART NAME
				ALIGNMENT TARGET
		SIZE	DWG. NO.	REV.
		A	D020494	A
		SCALE: NTS	SHEET 1 OF 1	