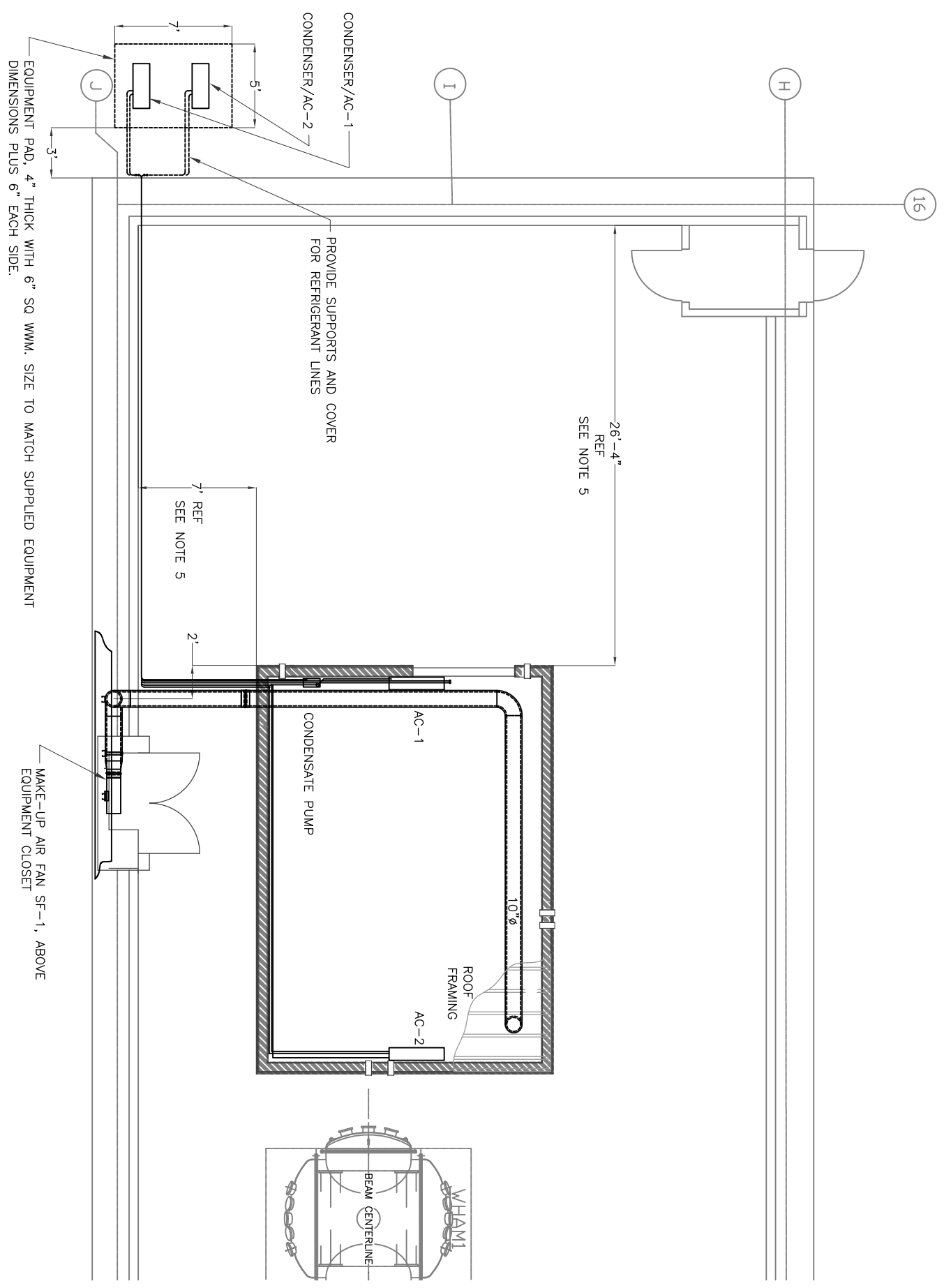
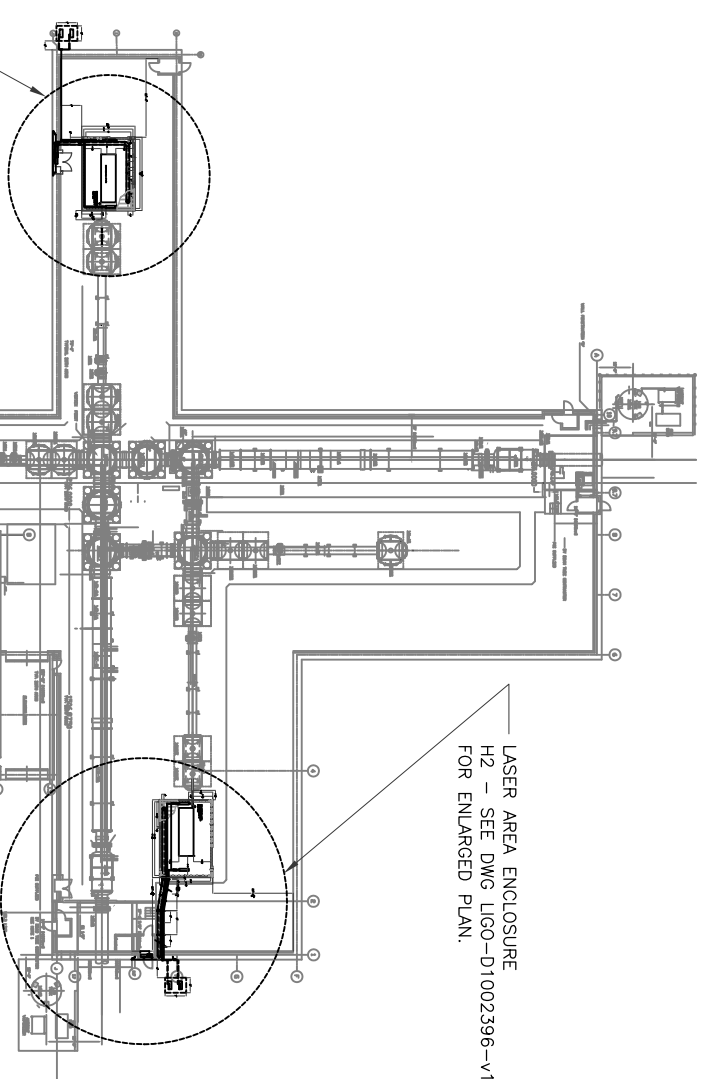


NOTES:

1. ALL WORK SHALL CONFORM TO THE LATEST EDITION OF THE FOLLOWING CODES AND GUIDELINES (OR AS DIRECTED BY GOVERNING AGENCIES WITHIN JURISDICTION):
 IBC (INTERNATIONAL BUILDING CODE)
 UMC (UNIFORM MECHANICAL CODE)
 UPC (UNIFORM PLUMBING CODE)
 NEC (NATIONAL ELECTRIC CODE)
2. CONTRACTOR IS RESPONSIBLE FOR VERIFICATION OF SITE CONDITIONS, INSTALLATION STANDARDS AND CONSTRUCTION CONDITIONS, DISCREPANCIES BETWEEN SITE CONDITIONS AND THE CONSTRUCTION DRAWINGS SHALL BE CALLED TO THE ATTENTION OF THE ARCHITECT/ENGINEER. WORK DONE WITHOUT THE ARCHITECT/ENGINEER'S APPROVAL IS THE RESPONSIBILITY OF THE CONTRACTOR.
3. CONTRACTOR ALONE SHALL BE RESPONSIBLE FOR SAFETY. CONTRACTOR SHALL PROVIDE ADEQUATE SAFEGUARDS, SAFETY DEVICES AND PROTECTIVE EQUIPMENT AND TAKE ANY OTHER NEEDED ACTIONS NECESSARY TO PROTECT THE LIFE, HEALTH AND SAFETY OF THE PUBLIC AND TO PROTECT PROPERTY IN CONNECTION WITH THE PERFORMANCE OF THE WORK COVERED BY THE CONTRACT.
4. LOCATION OF THE LAE IS BASED ON THE LOCATION OF THE LASER TABLE WITH RESPECT TO THE LASER TUBE CENTERLINE AND THE WHAM UNIT. SEE DRAWING D1002389 FOR ROOM DIMENSIONS WITH RESPECT TO THE LASER TABLE AND WHAM UNIT.
5. DIMENSIONS TO THE LVEA WALLS ARE APPROXIMATE. POSITIONING OF THE LAE WITHIN THE LVEA MUST BE BASED ON DIMENSIONS DESCRIBED IN NOTE 4.
6. CLEANLINESS MUST BE MAINTAINED THROUGHOUT CONSTRUCTION. MAKE CUTS OF GWB AND PLYWOOD OUTSIDE OF LVEA. TAPE EXTERIOR SHEETROCK ONLY - DO NOT SAND.



LASER AREA ENCLOSURE
H1 - SEE THIS DWG FOR ENLARGED PLAN.



DATE OF ISSUE

REV No	DATE	BY	DESCRIPTION	APPROVED
v2	10/21/10	GLH	MOVED SUPPLY AIR DUCT SOUTH.	
v3	11/3/10	GLH	UPDATED KEY PLAN	

DRAWN BY: GLH	
CHECKED BY:	DESIGN GM
DESIGN A/E	
HEI APPROVAL	

H1 LASER AREA ENCLOSURE MECHANICAL PLAN	
PROJECT NUMBER: 1036.01	CAD FILE: 1036H1

CALIFORNIA INSTITUTE OF TECHNOLOGY
LIGO HANFORD OBSERVATORY
HIBBS ENGINEERING, INC.
KENNEWICK, WASHINGTON

DRAWING NUMBER	2386
REV	v3

PRINTED BY: GI on 11/4/2010 3:29 PM

DRAWING: LIGO-D1002386