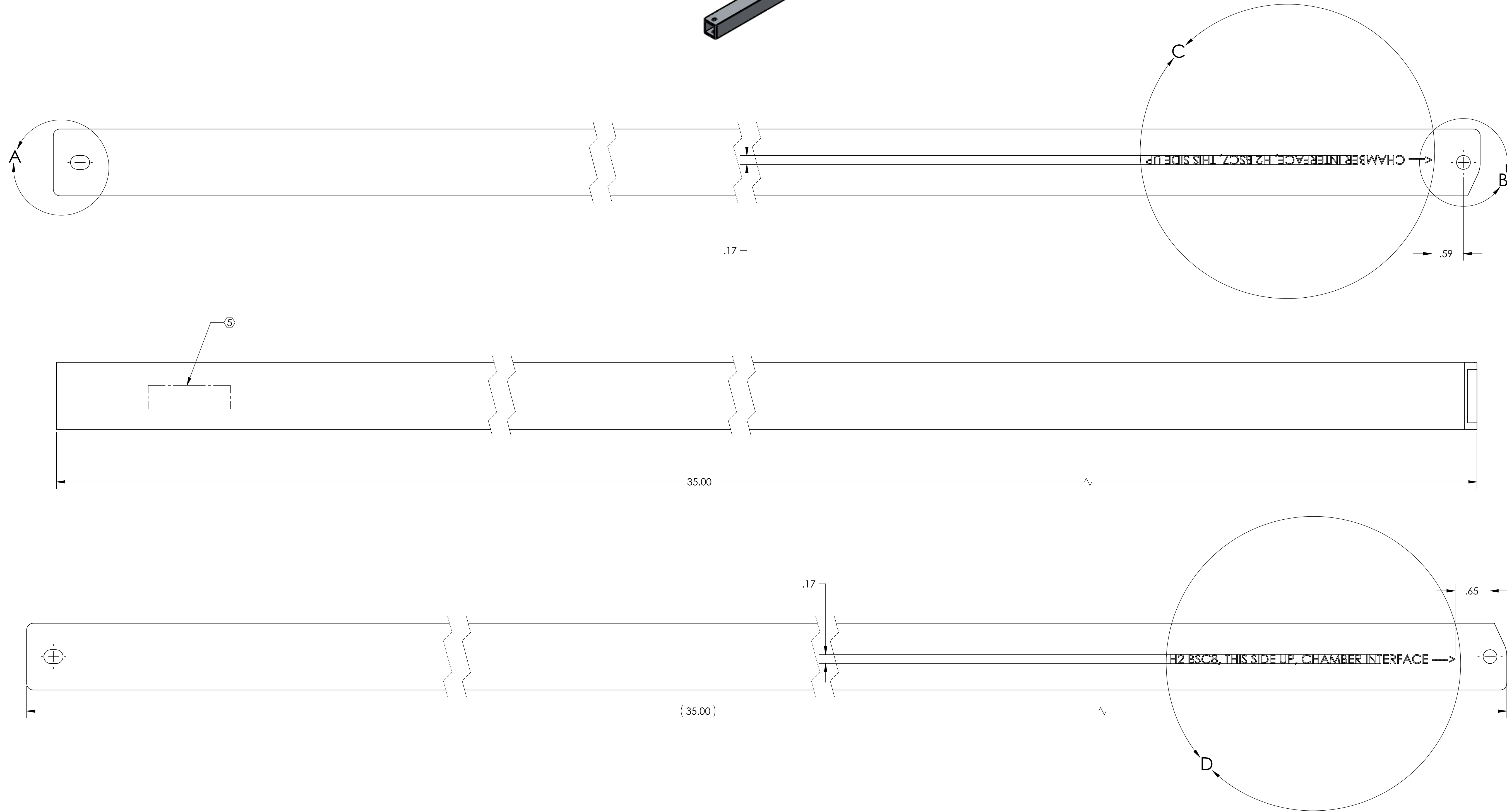
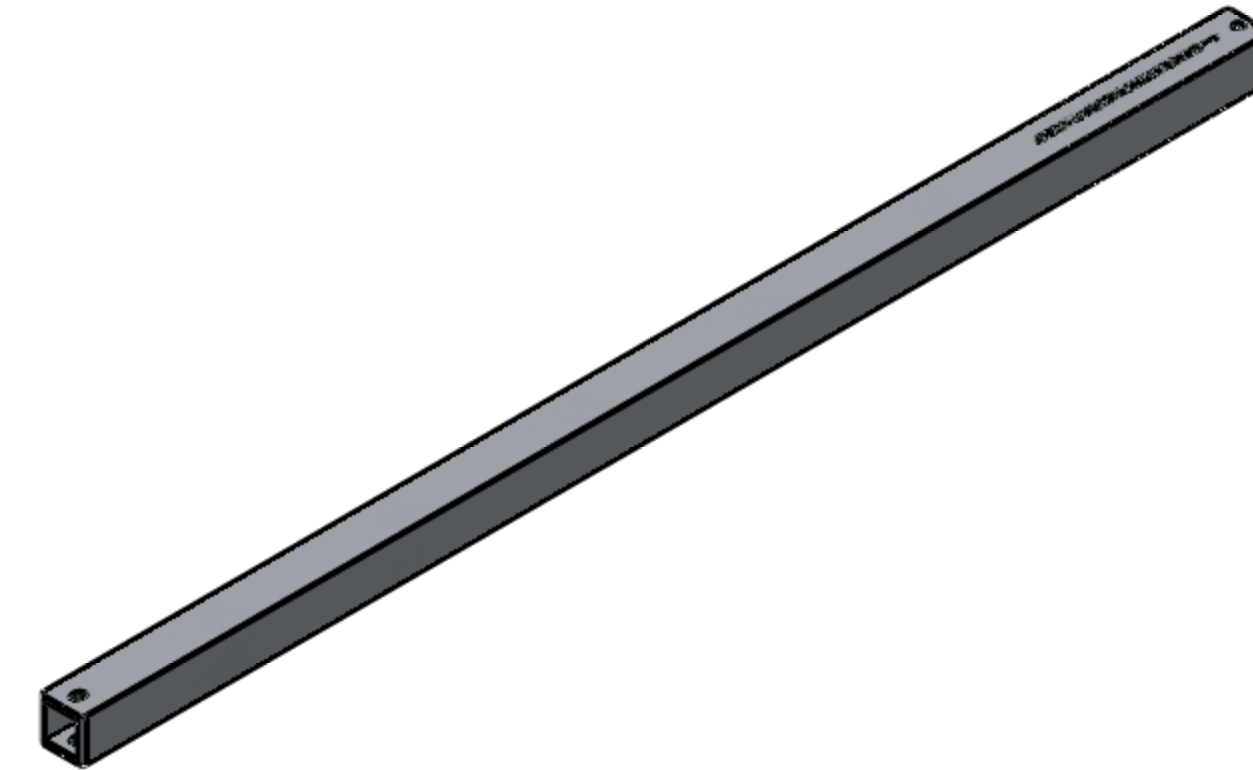


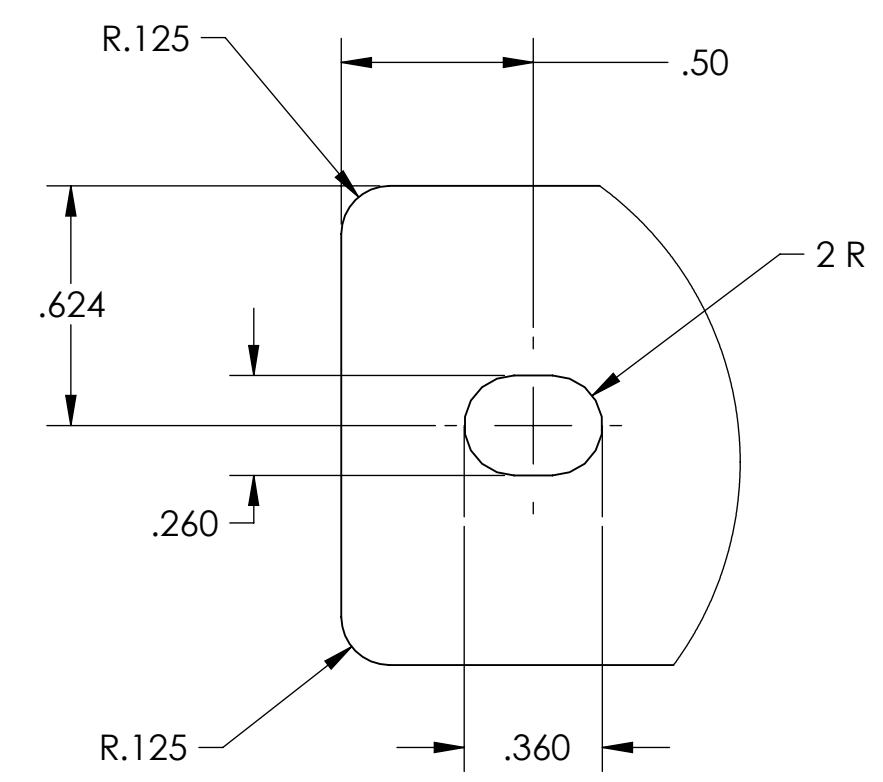
- NOTES CONTINUED:**
- 5. SCRIBE, ENGRAVE, OR MECHANICALLY STAMP (NO INKS OR DYES) DRAWING PART NUMBER, REVISION (AND VARIANT OR 'TYPE' IF APPLICABLE) ON NOTED SURFACE OF PART FOLLOWED ON THE NEXT LINE WITH A THREE DIGIT SERIAL NUMBER. SERIAL NUMBERS START AT 001 FOR THE FIRST ARTICLE AND PROCEED CONSECUTIVELY. USE MINIMUM 0.12" HIGH CHARACTERS. UNLESS THE SIZE OF THE PART DICTATES SMALLER CHARACTERS. A VIBRATORY TOOL MAY BE USED. EXAMPLE: DXXXXXX-VY, TYPE-XX, S/N XXX
  - 6. APPROXIMATE WEIGHT = 1.863 LB.
  - 7. ELECTROPOLISH ALL SURFACES TO REMOVE OXIDES AND MILL FINISH. USE OF ABRASIVE REMOVAL TECHNIQUES IS NOT ALLOWED.
  - 8. ALL PARTS SHALL BE MANUFACTURED IN ACCORDANCE WITH LIGO SPECIFICATION E0900364.
  - 9. AS RECEIVED MATERIAL CONDITION FOR THE STANDARD AI SECTION, 1-1/4 X 1-1/4 X 1/8 THICK WALLS

| REV. | DATE        | DCN #       | DRAWING TREE # |
|------|-------------|-------------|----------------|
| v1   | 21-AUG-2010 | -           | -              |
| v2   | 26-OCT-2010 | -           | -              |
| v3   | 22-DEC-2010 | E1000883-v1 | E1000884-v1    |

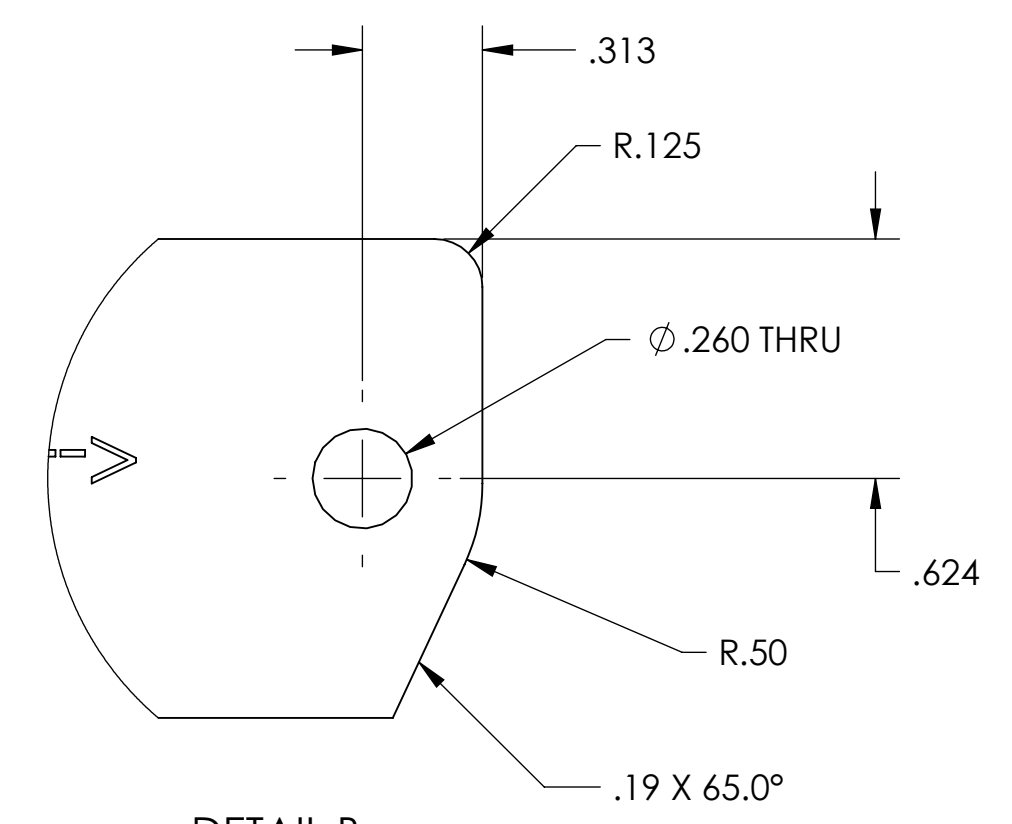


| DIMENSIONS ARE IN INCHES                |  | NOTES AND TOLERANCES: (UNLESS OTHERWISE SPECIFIED)  |                 | LIGO CALIFORNIA INSTITUTE OF TECHNOLOGY MASSACHUSETTS INSTITUTE OF TECHNOLOGY |  | PART NAME                          |                        |
|---|--|---|-----------------|---|--|------------------------------------|------------------------|
| TOLERANCES:<br>.XX ± .01<br>.XXX ± .005 |  | 1. INTERPRET DRAWING PER ASME Y14.5-1994.<br>2. REMOVE ALL SHARP EDGES, .02 MIN.<br>3. DO NOT SCALE FROM DRAWING.<br>4. ALL MACHINING FLUIDS MUST BE FULLY SYNTHETIC, FULLY WATER SOLUBLE AND FREE OF SULFUR, SILICONE, AND CHLORINE. |                 | SYSTEM ADVANCED LIGO SUB-SYSTEM AOS   |  | TCS UHV SHORT SUPPORT, BSC7 & BSC8 |                        |
| ANGULAR ± 0.5°                          |  | MATERIAL 6063-T5  | FINISH 63 μinch | NEXT ASSY D1001742, D1002431  |  | DESIGNER M.JACOBSON 01-SEP-2010    | SIZE DWG. NO. D1002327 |
|   |  |   |                 |   |  | DRAFTER A.COLE 21-AUG-2010         | REV. v3                |
|   |  |   |                 |   |  | CHECKER B. ANDERSON 05 JAN 2011    |                        |
|   |  |   |                 |   |  | APPROVAL C.TORRIE 06 JAN 2011      | SCALE: 1:4 PROJECTION: |
|   |  |   |                 |   |  | SHEET 1 OF 2                       |                        |

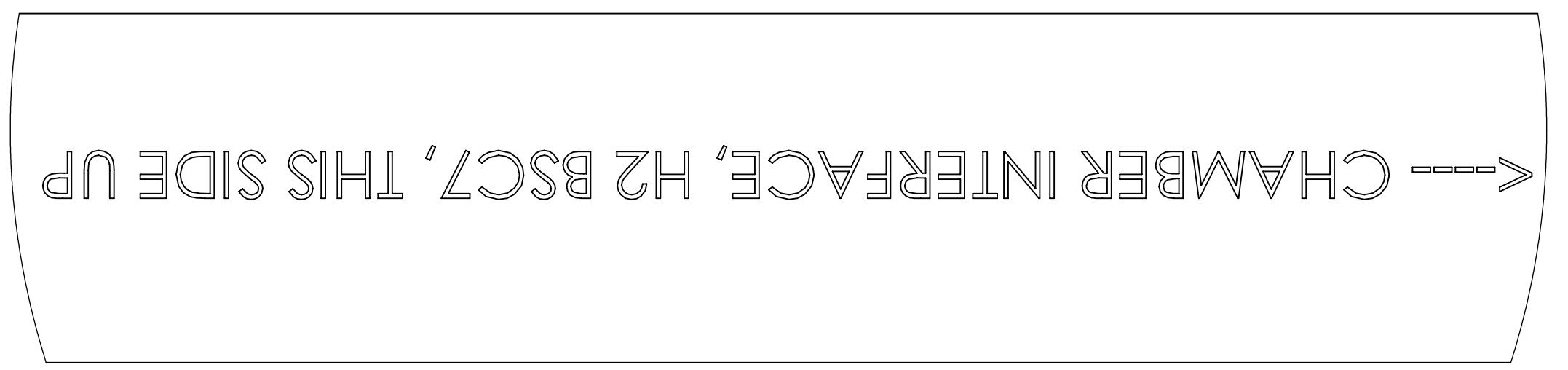
D1002327\_TCS UHV SHORT SUPPORT, BSC7 & BSC8, PART PDM REV. X024, DRAWING PDM REV. X020



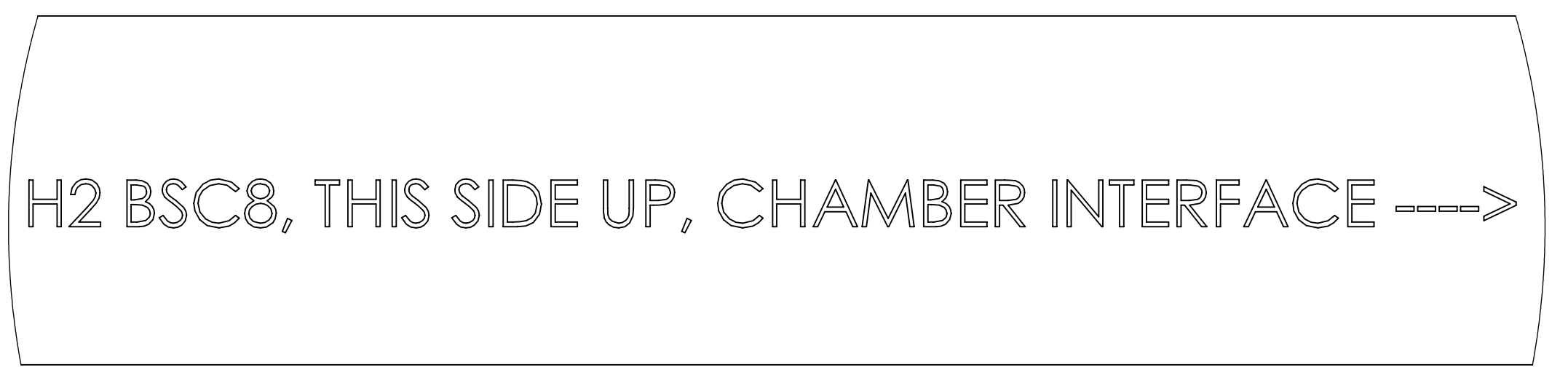
DETAIL A  
SCALE 2 : 1




DETAIL B  
SCALE 2 : 1



DETAIL C  
SCALE 2 : 1



DETAIL D  
SCALE 2 : 1

|   |   |                   |
|---|---|-------------------|
|  <b>CALIFORNIA INSTITUTE OF TECHNOLOGY</b><br><b>MASSACHUSETTS INSTITUTE OF TECHNOLOGY</b> |   | REV.<br><b>v3</b> |
| SIZE<br><b>D</b>  | DWG. NO.<br><b>D1002327</b>   | SHEET 2 OF 2      |
| SCALE: 1:4  | PROJECTION:  |                   |

D1002327\_CS\_UHV\_SHORT\_SUPPORT\_BSC7 & BSC8\_PART\_PDM\_REV\_X024\_DRAWING\_PDM\_REV\_X020