

NOTES: UNLESS OTHERWISE SPECIFIED

1. REMOVE ALL BURRS AND BREAK SHARP EDGES TO A MAXIMUM OF .015
2. PART NUMBER (DRAWING NO., DASH NO., REVISION NO., SERIAL NO.) TO BE CLEARLY MARKED ON THE PART ITSELF
3. PAINT:
ALL VISIBLE SURFACES
MEDIUM BLUE SHERWIN WILLIAMS (POLANE (R) T-PLUS POLYURETHANE ENAMEL) #SW-F63TX-L-2822-5864
PRIME WITH SHERWIN WILLIAMS INDUSTRIAL WASH PRIMER P60G2
4. BOTH TAPPED AND THRU HOLES WILL BE PLUGGED DURING APPLICATION.

REV.	DATE	DCN #	DRAWING TREE #
B	8/25/03	E030443-00-E	

D

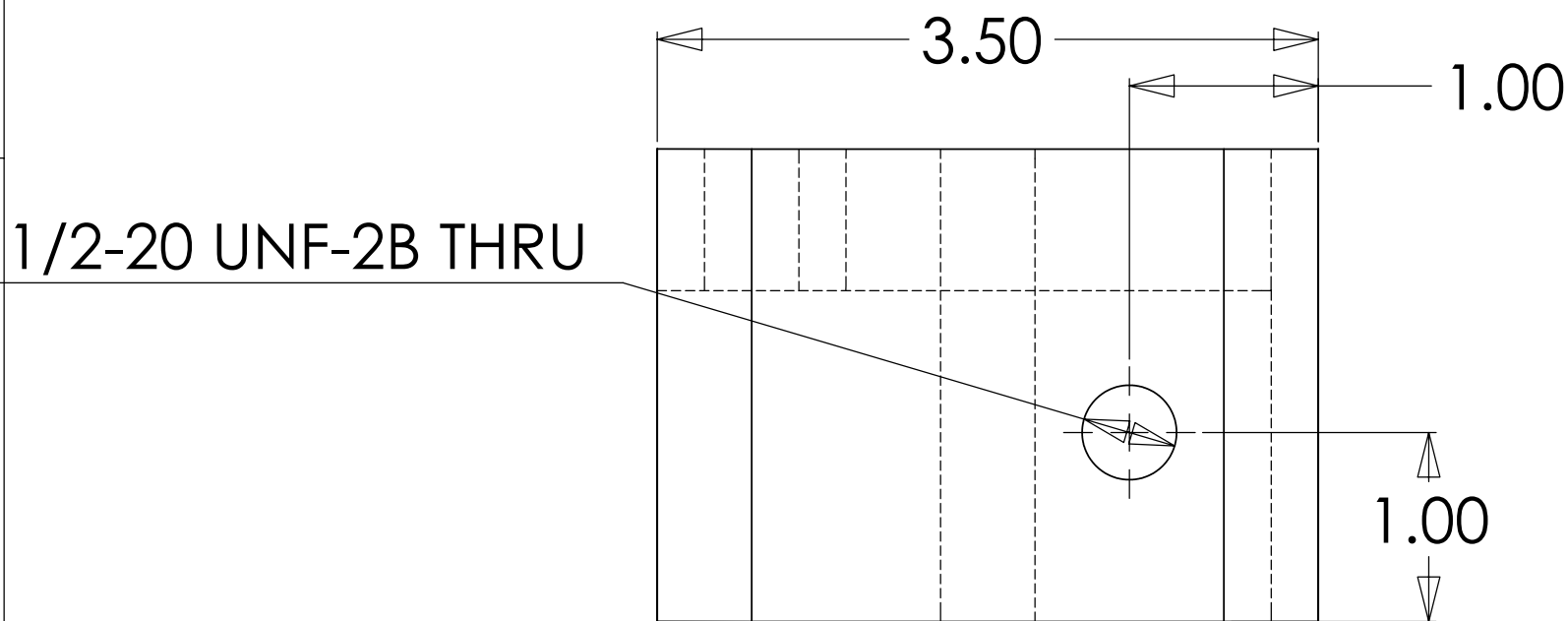
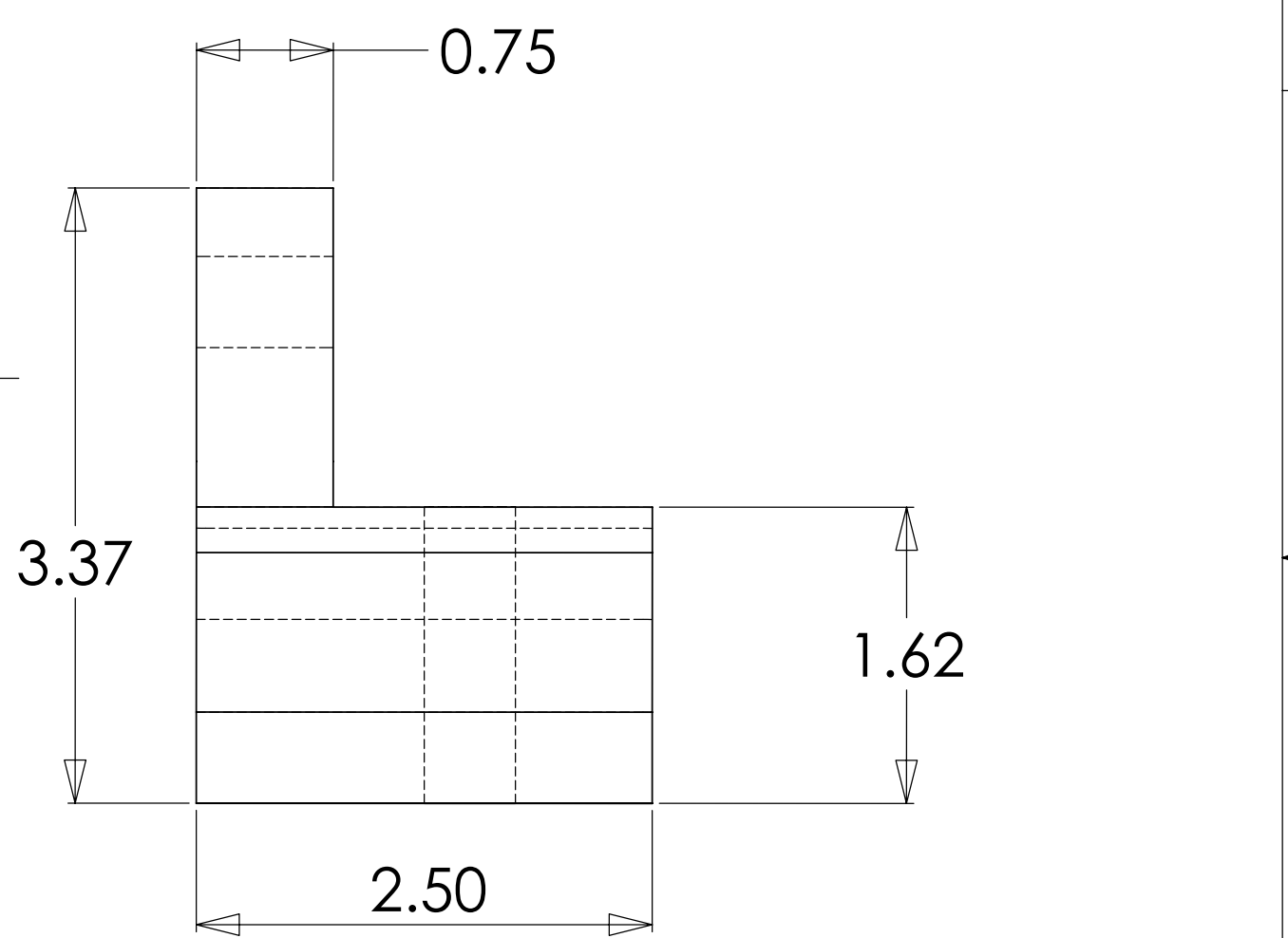
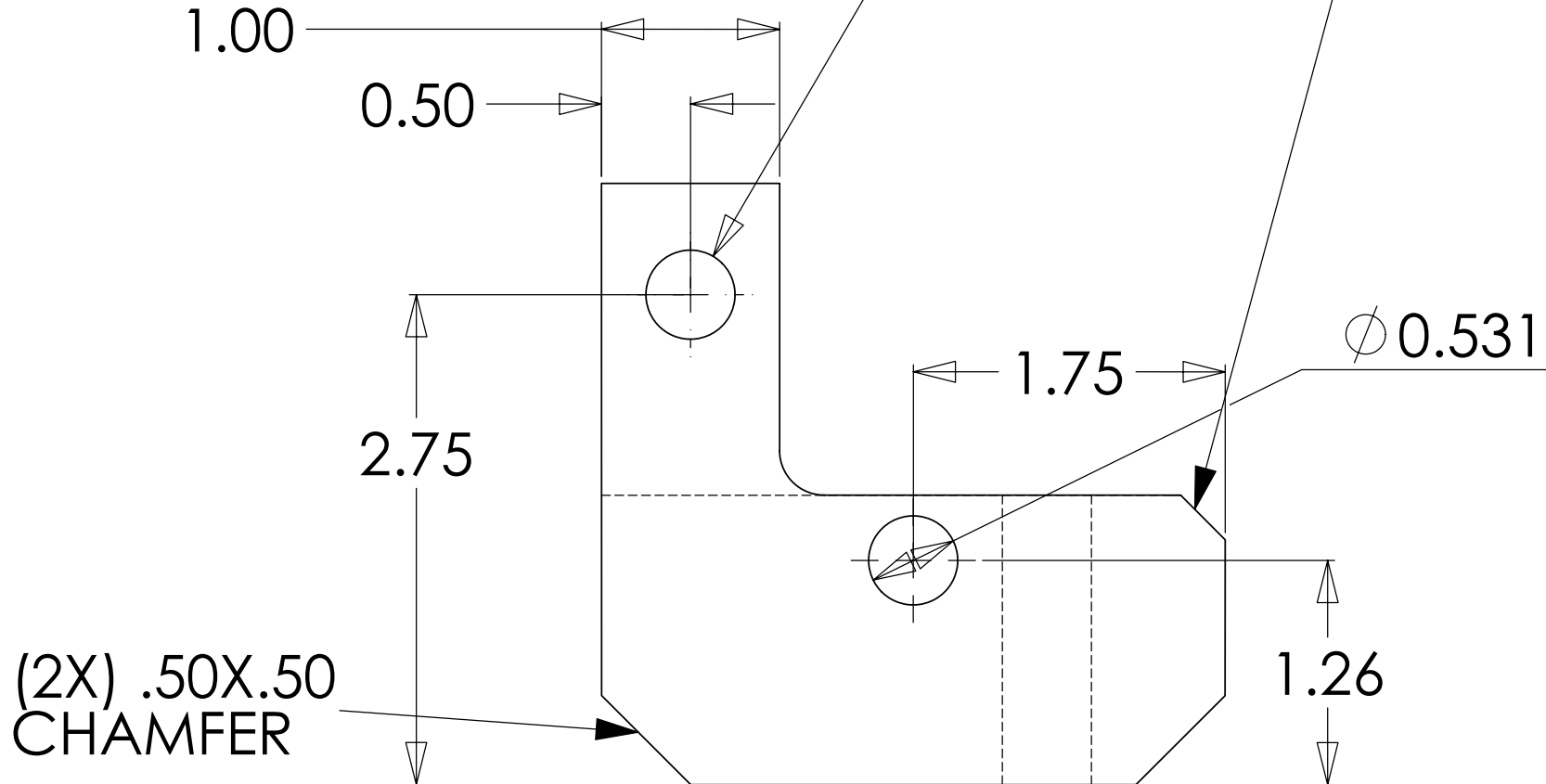
C

B

A

1/2-20 UNF - 2B Thru

.25X.25 CHAMFER



ITEM NO.	REQ.	SPARE	TOT.	PART NUMBER	DESCRIPTION	SUPPLIER
UNLESS OTHERWISE SPECIFIED: DIMENSIONS ARE IN INCHES						
TOLERANCES:		DATE	NAME	PARTS LIST		
.XX±: .02		5/29/02	KMASON	LIGO CALIFORNIA INSTITUTE OF TECHNOLOGY MASSACHUSETTS INSTITUTE OF TECHNOLOGY		
.XXX±: .005				SYSTEM		
ANGULAR: ± 1 DEG				SUB-SYSTEM		
MATERIAL 1018 CRS	COMMENTS:			NEXT ASSY PRE-ISOLATOR ASSEMBLY		
FINISH SEE NOTES				PART NAME OFFSET CLAMP, LEFT		
SIZE B		DWG. NO. D020453-B-D		REV B		
SCALE: 1:1		D020453_EPI_left_offset_clamp		SHEET 1 OF 1		