

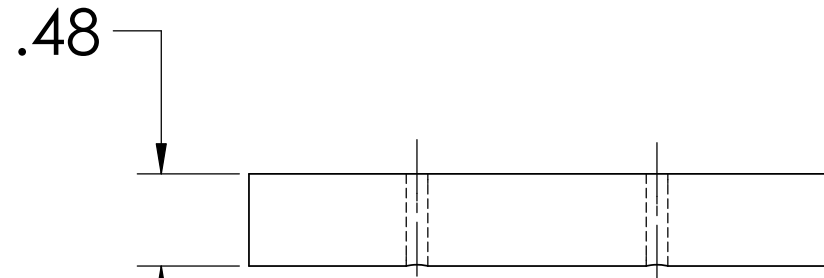
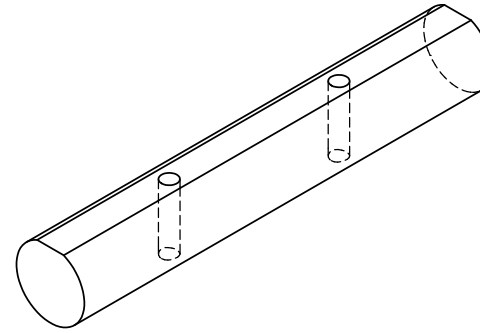
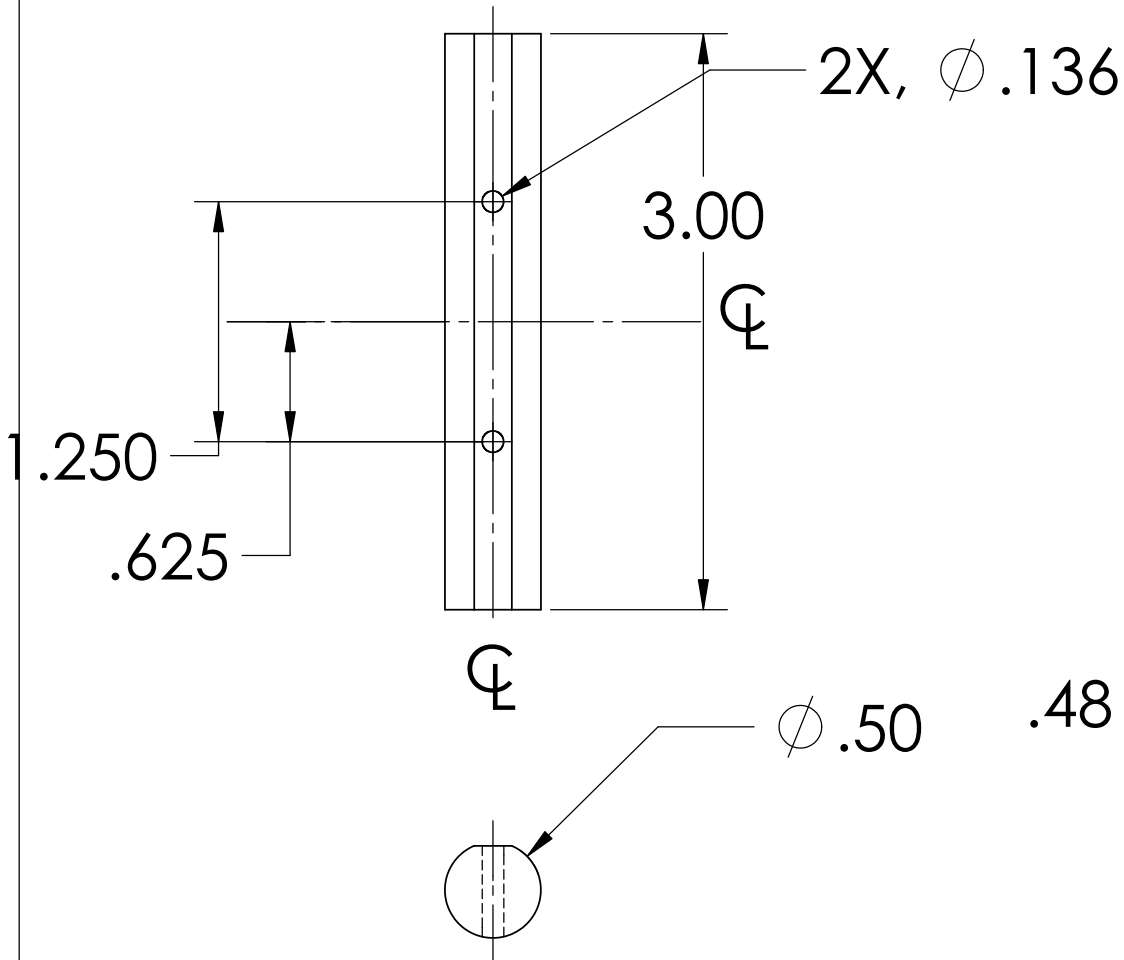
NOTES: (UNLESS OTHERWISE SPECIFIED)

1. DIMENSIONS IN INCHES

2. REMOVE ALL SHARP EDGES, R.02 MIN

3. ALL MACHINING FLUIDS SHALL BE WATER SOLUBLE AND FREE OF SULFUR, CHLORINE AND SILICONE, SUCH AS CINCINNATI MILACRON'S CIMTECH 410 (STAINLESS STEEL)

REV.	DATE	
A	24th JUNE 2004	E040303-00



DIMENSIONS ARE IN INCHES		NAME	DATE	CALIFORNIA INSTITUTE OF TECHNOLOGY MASSACHUSETTS INSTITUTE OF TECHNOLOGY
TOLERANCES: .XX ±0.01 .XXX ±0.005 ANGULAR ±1°		CIT/RJ	05/02	
MATERIAL 6061-T6_Al		DRAWN		SYSTEM ADVANCED LIGO
FINISH		CHECKED		SUB-SYSTEM SUS
		COMMENTS:		NEXT ASSY MC: UPPER MASS
				PART NAME ALUM BAR PLATE LOWER BLADES
		SIZE	DWG. NO.	REV.
		A	D020450	A
		SCALE: NTS		SHEET 1 OF 1