

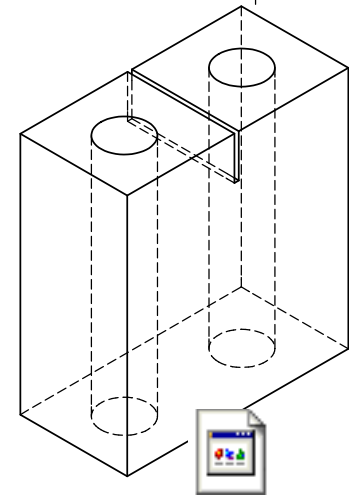
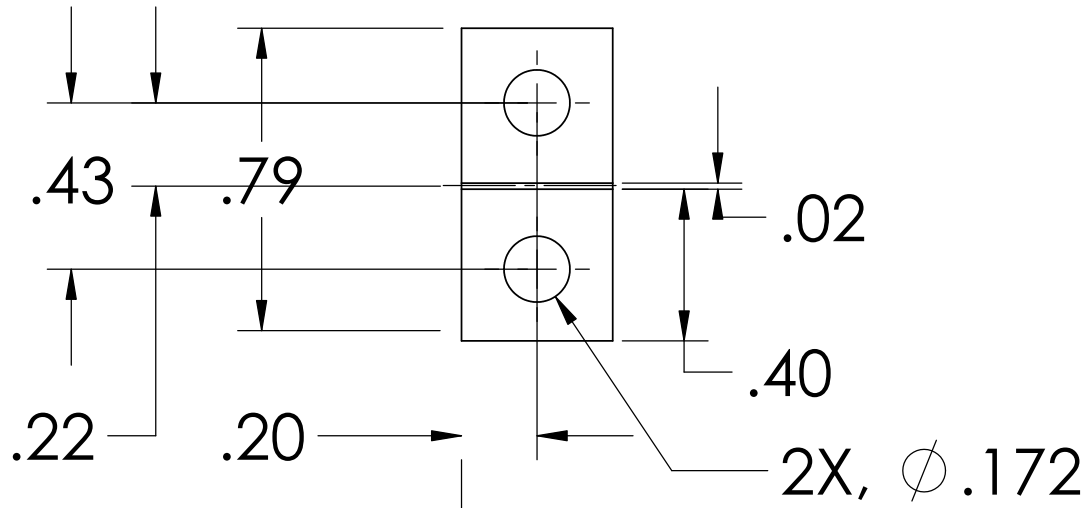
NOTES: (UNLESS OTHERWISE SPECIFIED)

1. DIMENSIONS IN INCHES

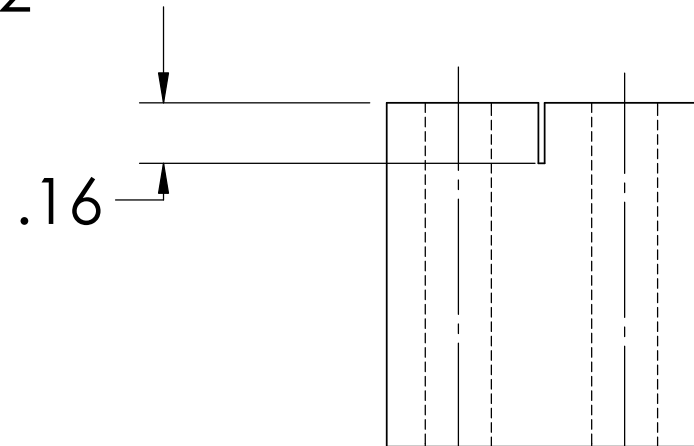
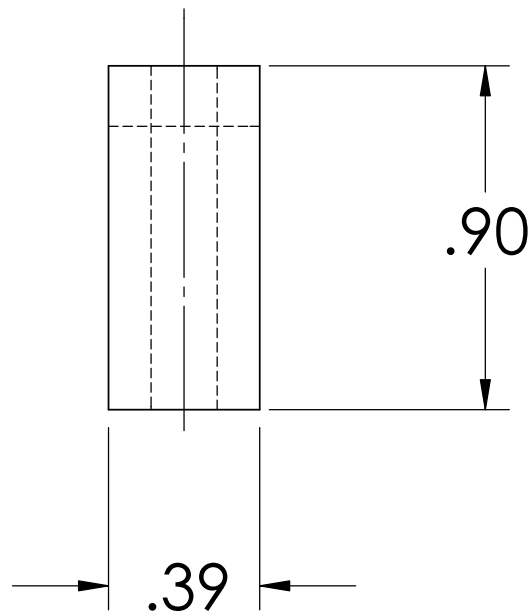
2. REMOVE ALL SHARP EDGES, R.02 MIN


3. ALL MACHINING FLUIDS SHALL BE WATER SOLUBLE AND FREE OF SULFUR, CHLORINE AND SILICONE, SUCH AS CINCINNATI MILACRON'S CIMTECH 410 (STAINLESS STEEL)

REV.	DATE	DCN
A	24TH JUNE 2004	E040303-00



D020440_UpperWireHeightBalance.step



DIMENSIONS ARE IN INCHES		NAME	DATE	 CALIFORNIA INSTITUTE OF TECHNOLOGY MASSACHUSETTS INSTITUTE OF TECHNOLOGY
TOLERANCES: .XX ±0.01 .XXX ±0.005 ANGULAR ±1°		DRAWN CIT/RJ	05/02	
MATERIAL 6061-T6-AL		CHECKED		SYSTEM ADVANCED LIGO
FINISH				SUB-SYSTEM SUS
		COMMENTS:		NEXT ASSY MC: WIRE JIG
				PART NAME UPPER WIRE HEIGHT BALANCE
		SIZE A	DWG. NO. D020440	REV. A
		SCALE: NTS		SHEET 1 OF 1