
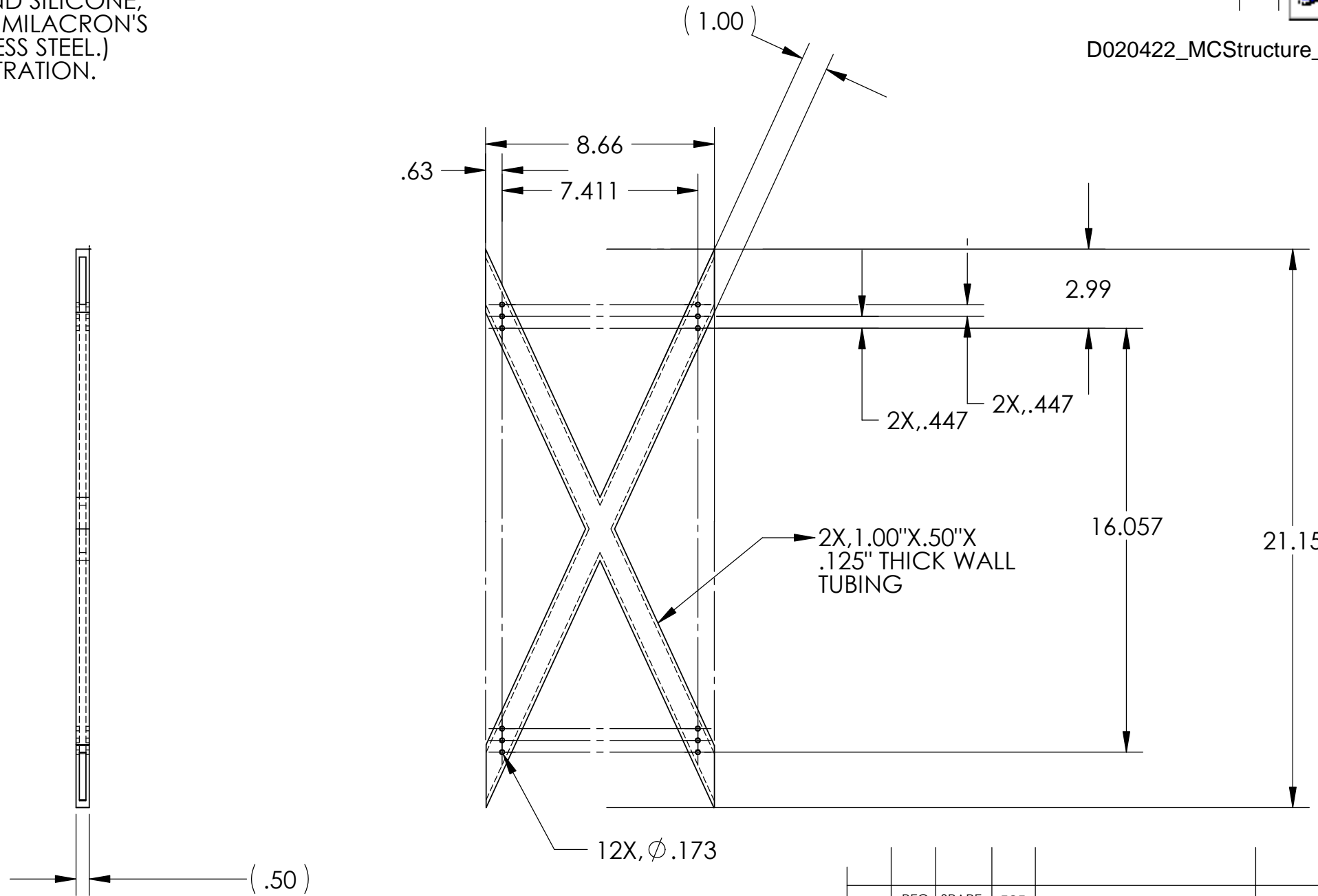


NOTES: (UNLESS OTHERWISE SPECIFIED)

1. DIMENSIONS IN INCHES.
2. BREAK ALL SHARP EDGES.
3. ALL MACHINING FLUIDS TO BE WATER SOLUBLE AND FREE OF SULFUR, CHLORINE AND SILICONE, SUCH AS CINCINNATI MILACRON'S CIMTECH 410 (STAINLESS STEEL.)
4. ALL WELDS FULL PENETRATION.

REV.	DATE	DCN #	DRAWING TREE #
A	7/04	E040303-00	E030507-A
			

D020422_MCStructure_SideXStiffener.step



ITEM NO.	REQ.	SPARE	TOT.	PART NUMBER	DESCRIPTION	SUPPLIER	
PARTS LIST							
UNLESS OTHERWISE SPECIFIED:				DATE	NAME	LIGO CALIFORNIA INSTITUTE OF TECHNOLOGY MASSACHUSETTS INSTITUTE OF TECHNOLOGY SYSTEM ADVANCED LIGO SUB-SYSTEM SUSPENSIONS NEXT ASSY MODE CLEANER SUSPENSION PART NAME SIDE X STIFFENER	
DIMENSIONS ARE IN INCHES				DRAWN	8/02		J.Romie
TOLERANCES:				CHECKED			
.XX ±:0.01 .XXX ±:0.005 ANGULAR: ±0.5 DEG							
MATERIAL				COMMENTS:		SIZE	
ALUM.						DWG. NO.	
FINISH						REV	
NONE						D020422	
SCALE: 1:5						SHEET 1 OF 1	