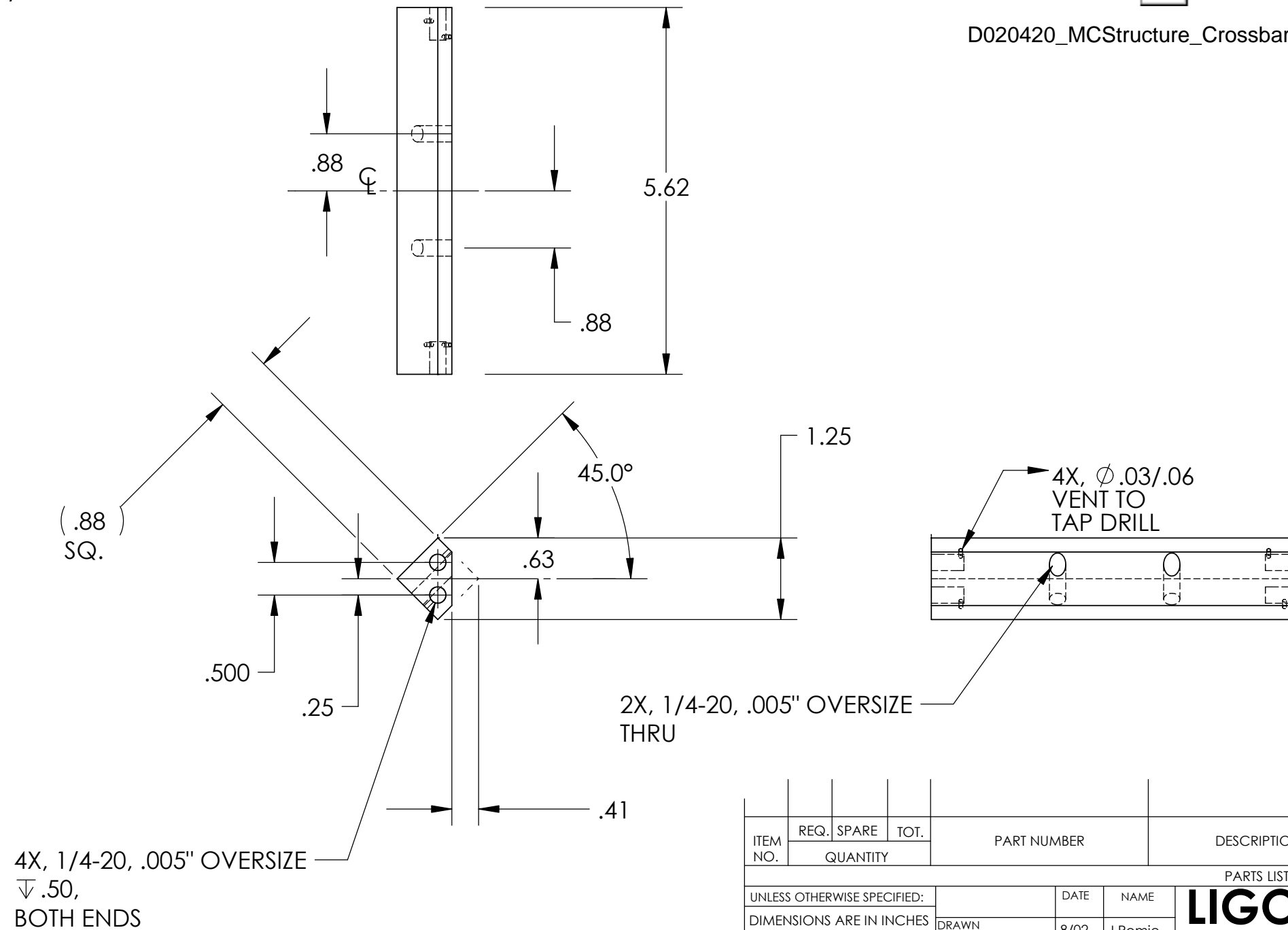


NOTES: (UNLESS OTHERWISE SPECIFIED)
 1. DIMENSIONS IN INCHES.
 2. BREAK ALL SHARP EDGES.
 3. ALL MACHINING FLUIDS TO BE WATER SOLUBLE AND FREE OF SULFUR, CHLORINE AND SILICONE, SUCH AS CINCINNATI MILACRON'S CIMTECH 410 (STAINLESS STEEL.)

REV.	DATE	DCN #	DRAWING TREE #
A	7/04	E040303-00	E030507-A



D020420_MCStructure_Crossbar.step



ITEM NO.	REQ.	SPARE	TOT.	PART NUMBER	DESCRIPTION	SUPPLIER
UNLESS OTHERWISE SPECIFIED: DIMENSIONS ARE IN INCHES						
TOLERANCES: .XX ±:0.01 .XXX ±:0.005 ANGULAR: ±0.5 DEG.						
MATERIAL 6061-T6 ALUM						
FINISH NONE						
PARTS LIST						
DRAWN				DATE	NAME	LIGO CALIFORNIA INSTITUTE OF TECHNOLOGY MASSACHUSETTS INSTITUTE OF TECHNOLOGY SYSTEM ADVANCED LIGO SUB-SYSTEM SUSPENSIONS NEXT ASSY MODE CLEANER SUSPENSION PART NAME CROSSBAR FOR STOPS
CHECKED				8/02	J.Romie	
COMMENTS:				SIZE	DWG. NO.	REV
				B	D020420	A
				SCALE:		SHEET 1 OF 1