

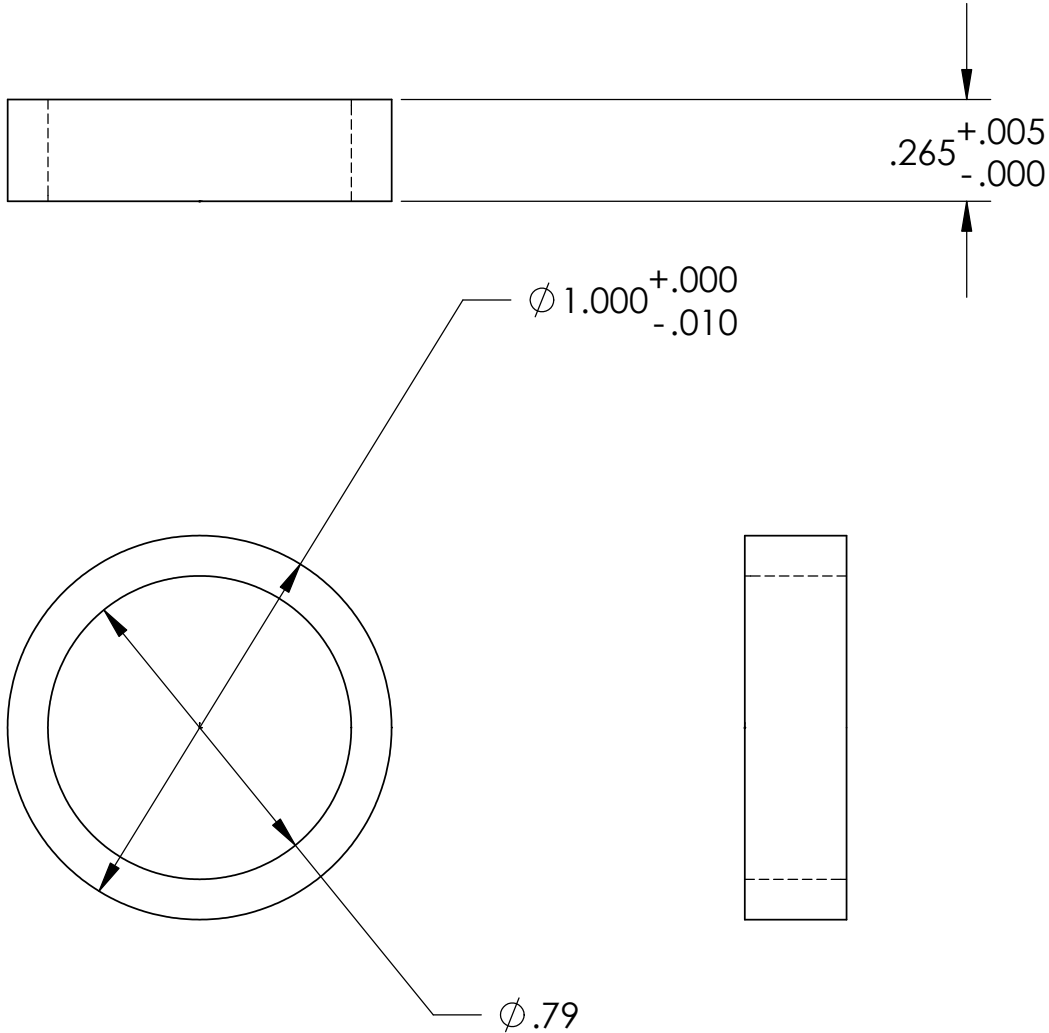
NOTES: (UNLESS OTHERWISE SPECIFIED)

1. DIMENSIONS IN INCHES.
2. BREAK ALL SHARP EDGES.
3. ALL MACHINING FLUIDS SHALL BE WATER SOLUBLE AND FREE OF SULFUR, CHLORINE AND SILICONE, SUCH AS CINCINNATI MILACRON'S CIMTECH 410 (STAINLESS STEEL.)
4. TO BE USED WITH CVI LASER MIRROR P/N PR1-1064-99-1037-XXX AND METAL TEST MASS, MODE CLEANER, P/N D020234.

REV.	DATE	DCN #	DRAWING TREE #
A	7/04	E040303-00	E030507-A



D020416_MCStructure_OpticSpacer.step



DIMENSIONS ARE IN INCHES TOLERANCES: .XX ±0.01 .XXX ±0.005 ANGULAR ±0.5 DEG.	DRAWN	NAME	DATE	CALIFORNIA INSTITUTE OF TECHNOLOGY MASSACHUSETTS INSTITUTE OF TECHNOLOGY
	CHECKED	J.Romie	8/02	
MATERIAL	COMMENTS:			SYSTEM
6061-T6 ALUM				ADVANCED LIGO
FINISH				SUB-SYSTEM
NONE				MODE CLEANER SUSPENSION
				NEXT ASSY
				METAL TEST MASS, MC
				PART NAME
				CVI OPTIC SPACER
	SIZE	DWG. NO.	REV.	
	A	D020416	A	
	SCALE:	N/A		SHEET 1 OF 1