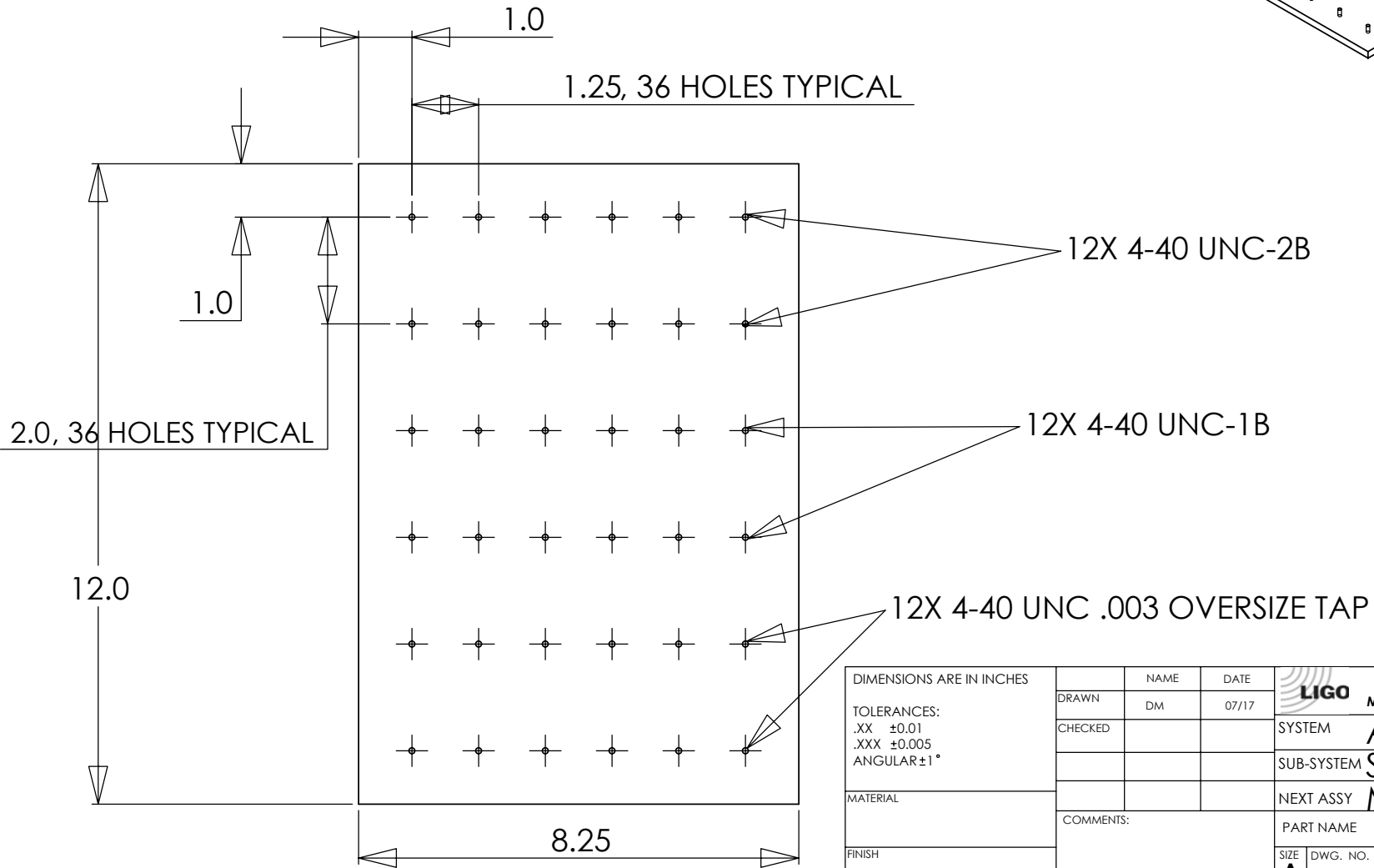
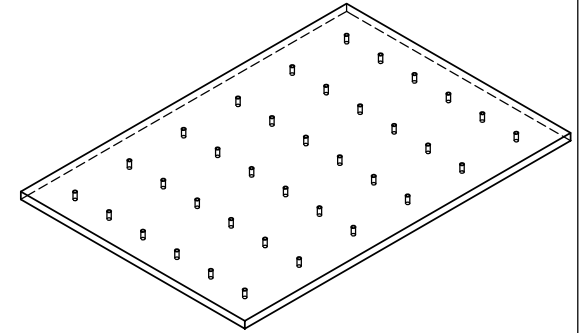
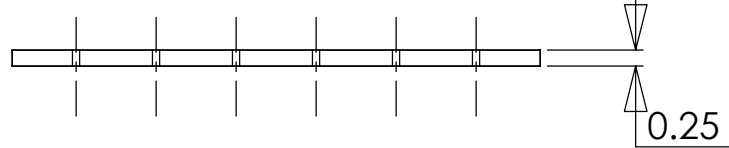


NOTES: (UNLESS OTHERWISE SPECIFIED)

1. DIMENSIONS IN INCHES
2. REMOVE ALL SHARP EDGES, R.02 MIN
3. ALL MACHINING FLUIDS SHALL BE WATER SOLUBLE AND FREE OF SULFUR, CHLORINE AND SILICONE, SUCH AS CINCINNATI MILACRON'S CIMTECH 410 (STAINLESS STEEL)
4. QUANTITY 2: ONE EACH OF MATERIALS ALUMINUM AND STAINLESS STEEL 300

REV.	DATE	DCN #	DRAWING TREE #



DIMENSIONS ARE IN INCHES		NAME	DATE	CALIFORNIA INSTITUTE OF TECHNOLOGY MASSACHUSETTS INSTITUTE OF TECHNOLOGY
TOLERANCES: .XX ±0.01 .XXX ±0.005 ANGULAR ±1°		DM	07/17	
MATERIAL		CHECKED		SYSTEM ADVANCED LIGO
FINISH		COMMENTS:		SUB-SYSTEM SUS
				NEXT ASSY MC
				PART NAME COLD-WELDING PLATE 4-40
		SIZE A	DWG. NO. D020384-00-D	REV.
		SCALE: NTS		SHEET 1 OF 1