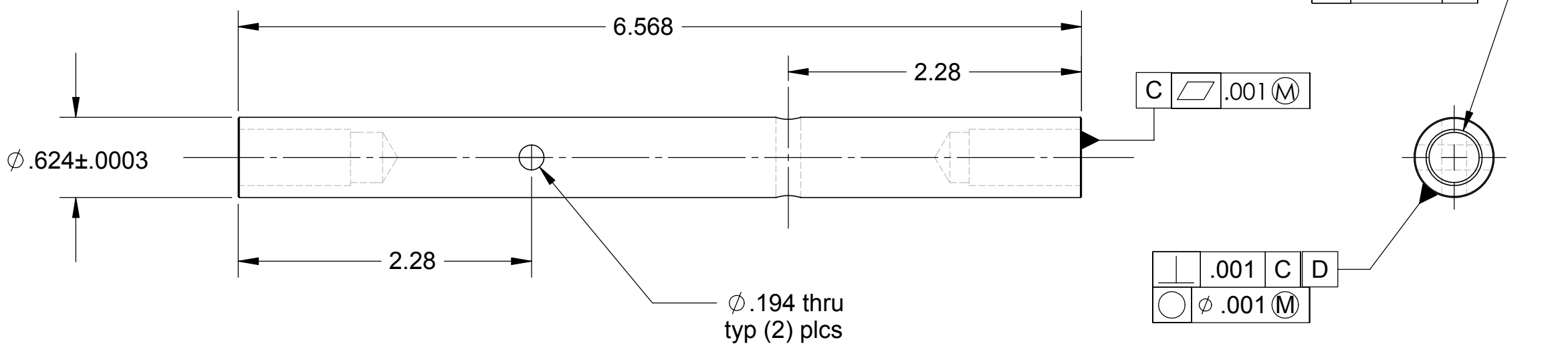
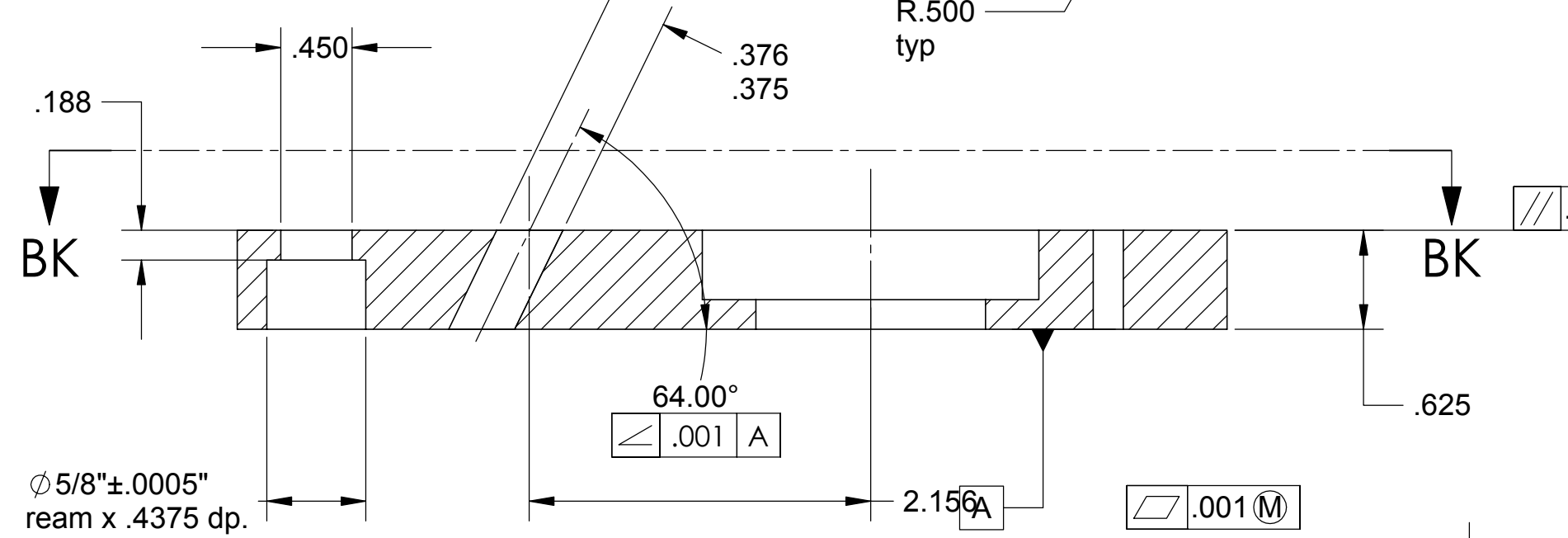
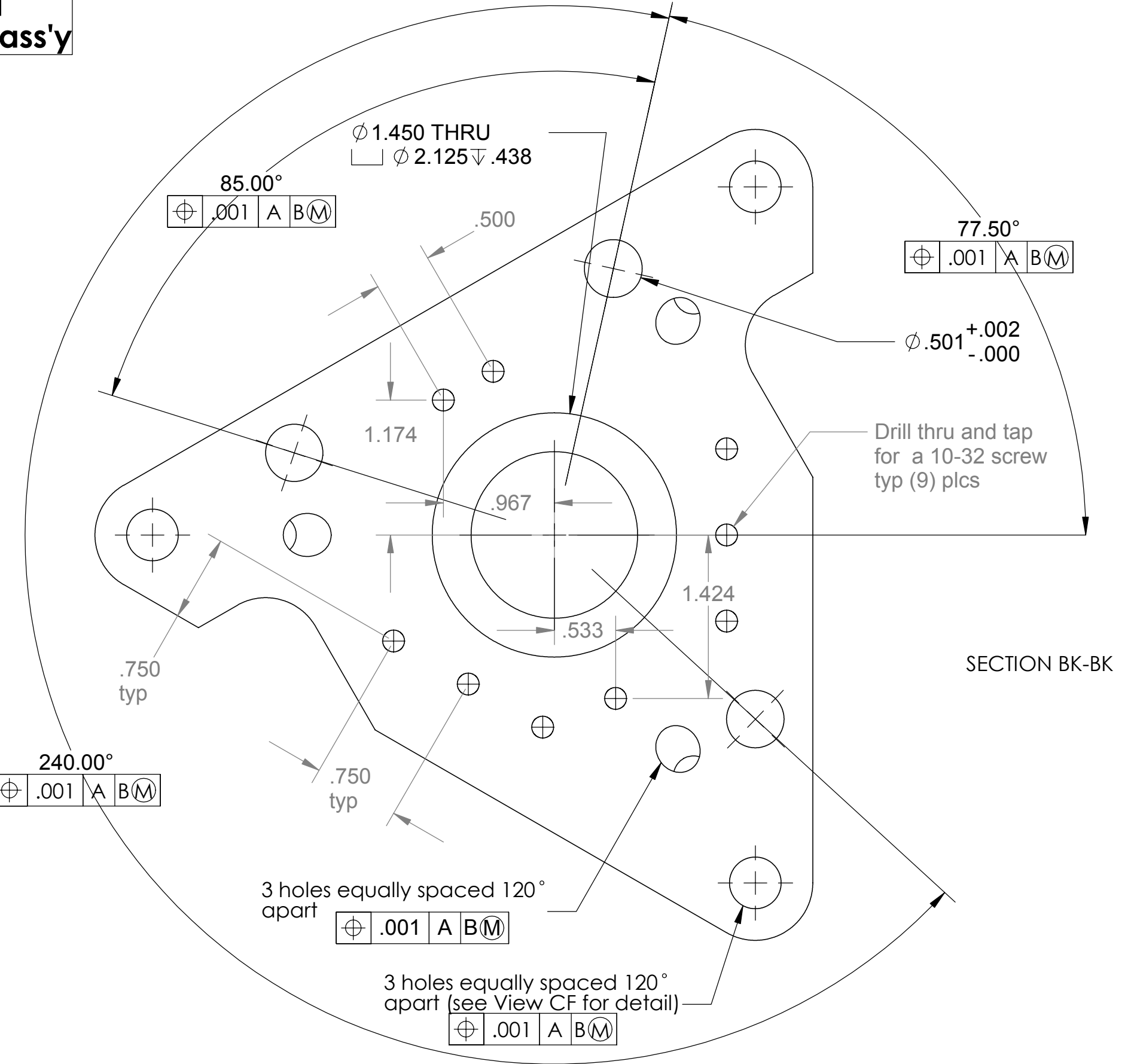
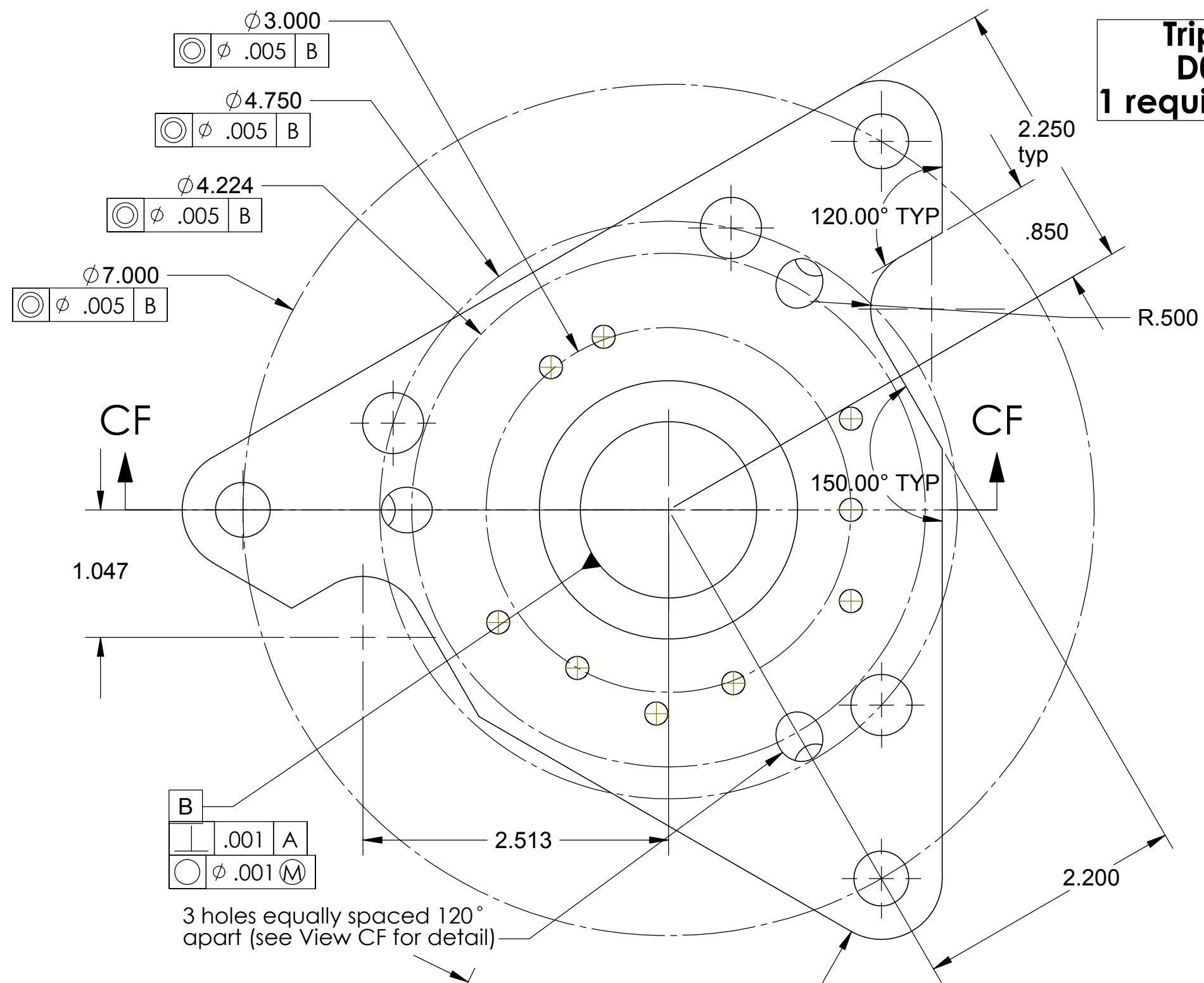


REV.	DATE	DCN #	DRAWING TREE #
A	2/9/2003		

**Tripod Base
D020371-1
1 required per ass'y**



**Tripod
Vertical Post
D020371-2
3 required per ass'y**

UNLESS OTHERWISE SPECIFIED: DIMENSIONS ARE IN INCHES		DATE	NAME	CALIFORNIA INSTITUTE OF TECHNOLOGY MASSACHUSETTS INSTITUTE OF TECHNOLOGY
TOLERANCES: .XX ± 0.020"	DRAWN	4/02	Hardham	
.XXX ± 0.005"	REDRAWN	Fall '02	Hammond	
ANGULAR ± 30'	CHECKED	2/9/03	Kern	
MATERIAL: 304 L	COMMENTS:			SYSTEM LASTI SUB-SYSTEM HEPI NEXT ASSY PART NAME HEPI Tripod Base and Vertical Post SIZE DWG. NO. D020371-A-E SCALE: 1:1 unless noted
FINISH 32 RMS unless noted				REV A