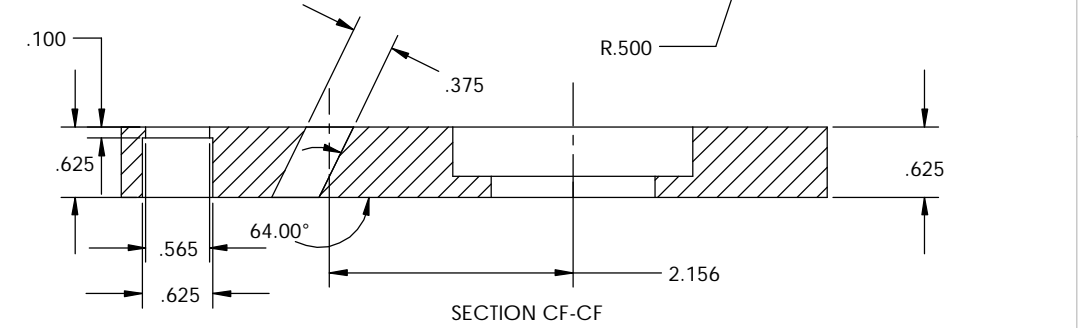
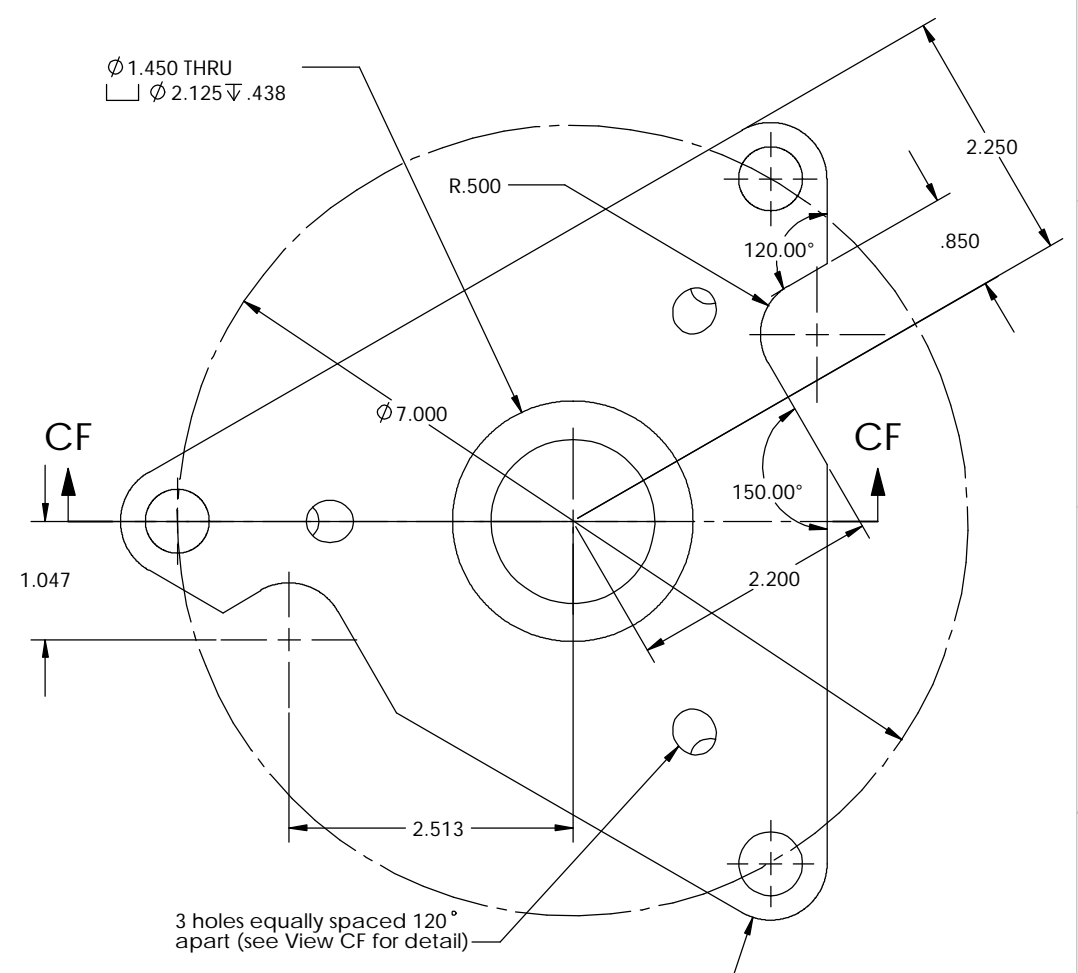
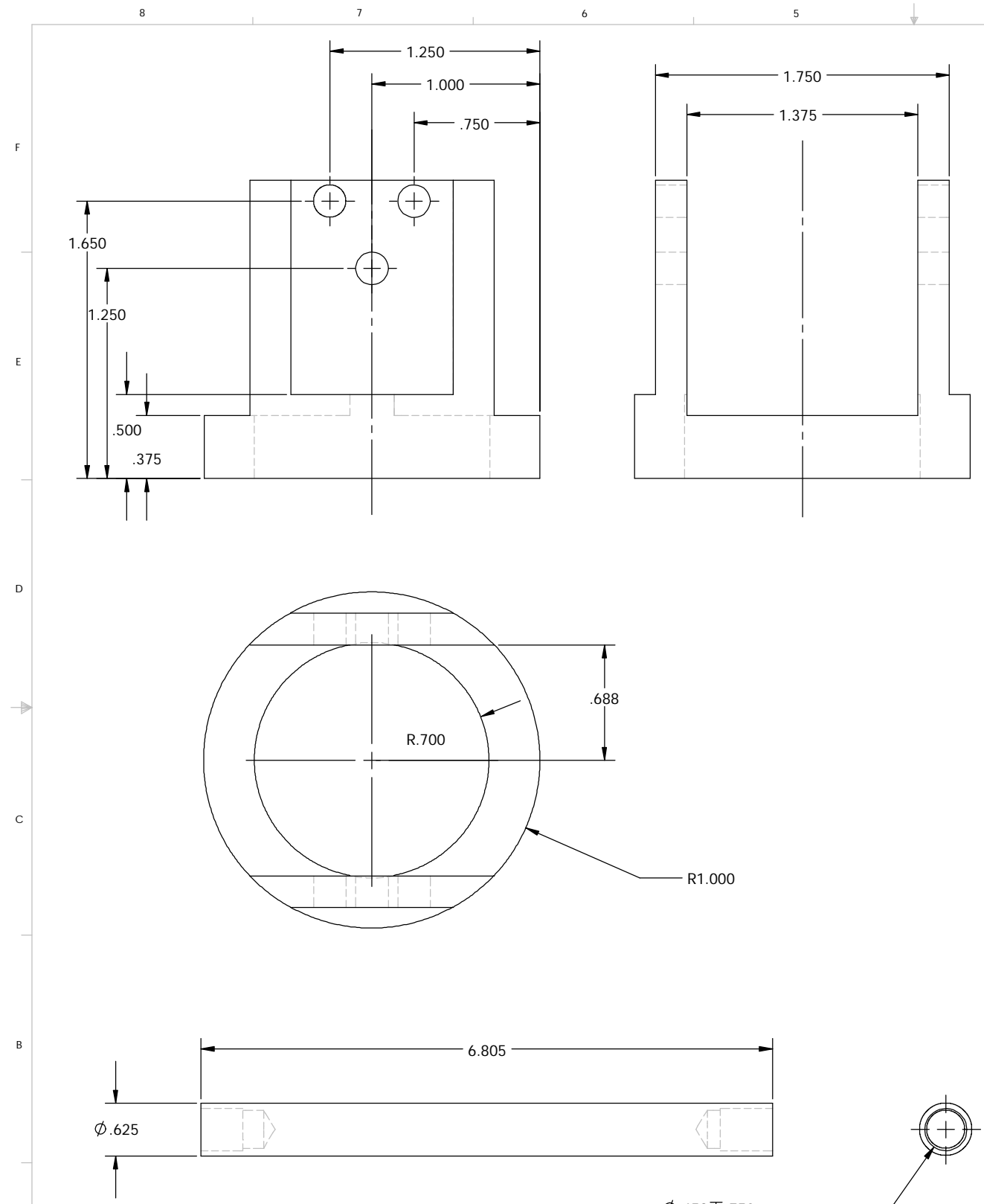


REV.	DATE	DCN #	DRAWING TREE #



Ø.453 .750
 □ Ø.500 .500
 for a 1/2-20 tapped hole
 typ both sides

6 R0G: RUN (GXFDMRQDOLFHQVH
 ,QVAKFMRQD8 VH2 Q0

UNLESS OTHERWISE SPECIFIED:		DATE	NAME	HEPI Tripod Base, L4C Nut, and Vertical Post	
DIMENSIONS ARE IN INCHES		4/02	Hardham	CALIFORNIA INSTITUTE OF TECHNOLOGY MASSACHUSETTS INSTITUTE OF TECHNOLOGY	
TOLERANCES:		6/22/02	Hammond	SYSTEM LASTI	
XX ± 0.020"		6/24/02	Kern	SUB-SYSTEM HEPI	
.XXX ± 0.005"				NEXT ASSY	
ANGULAR ± 30°				PART NAME	
MATERIAL:				SIZE	DWG. NO.
FINISH:				C	LIGO-D020371-00-E
				SCALE:	REV