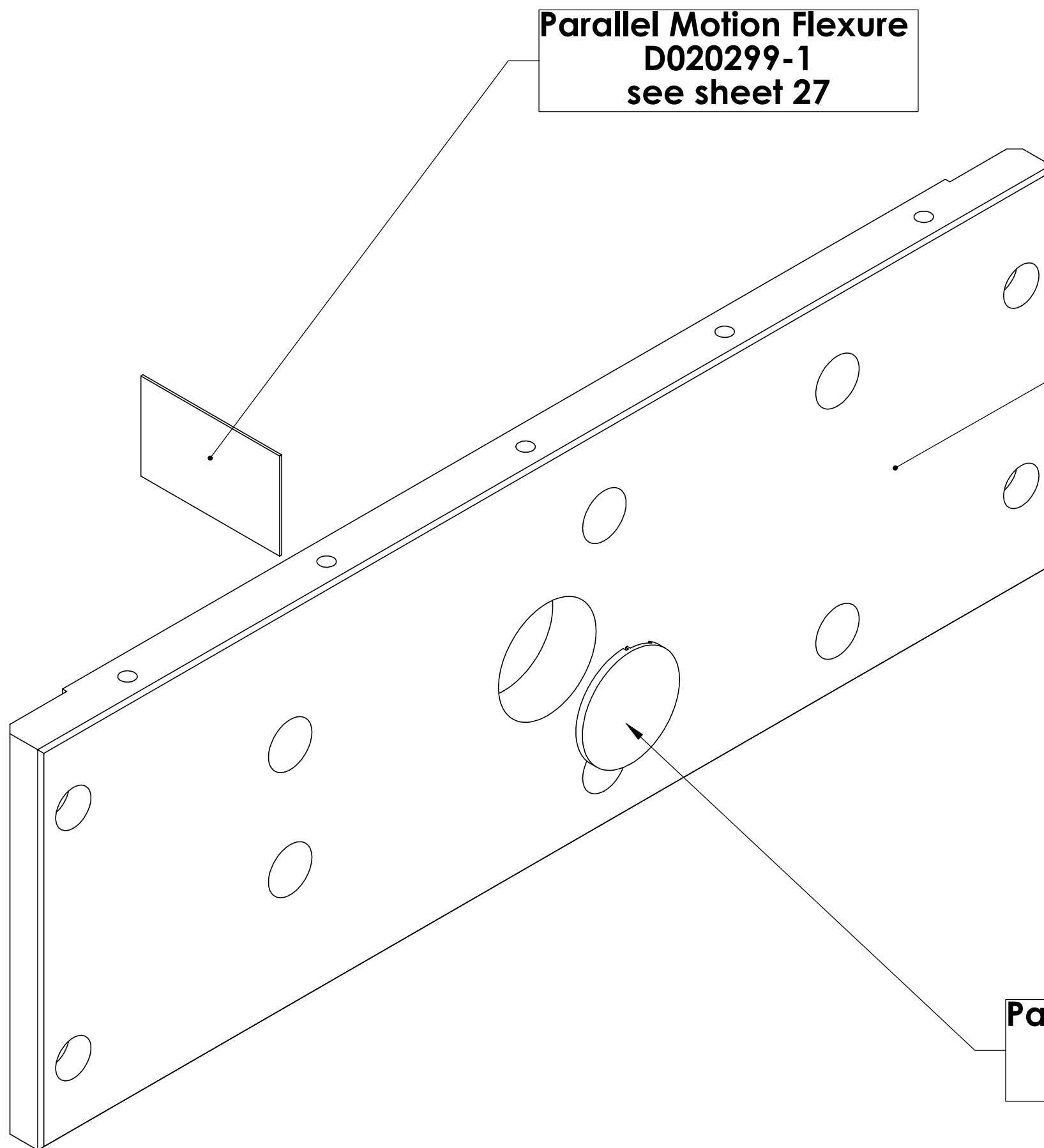


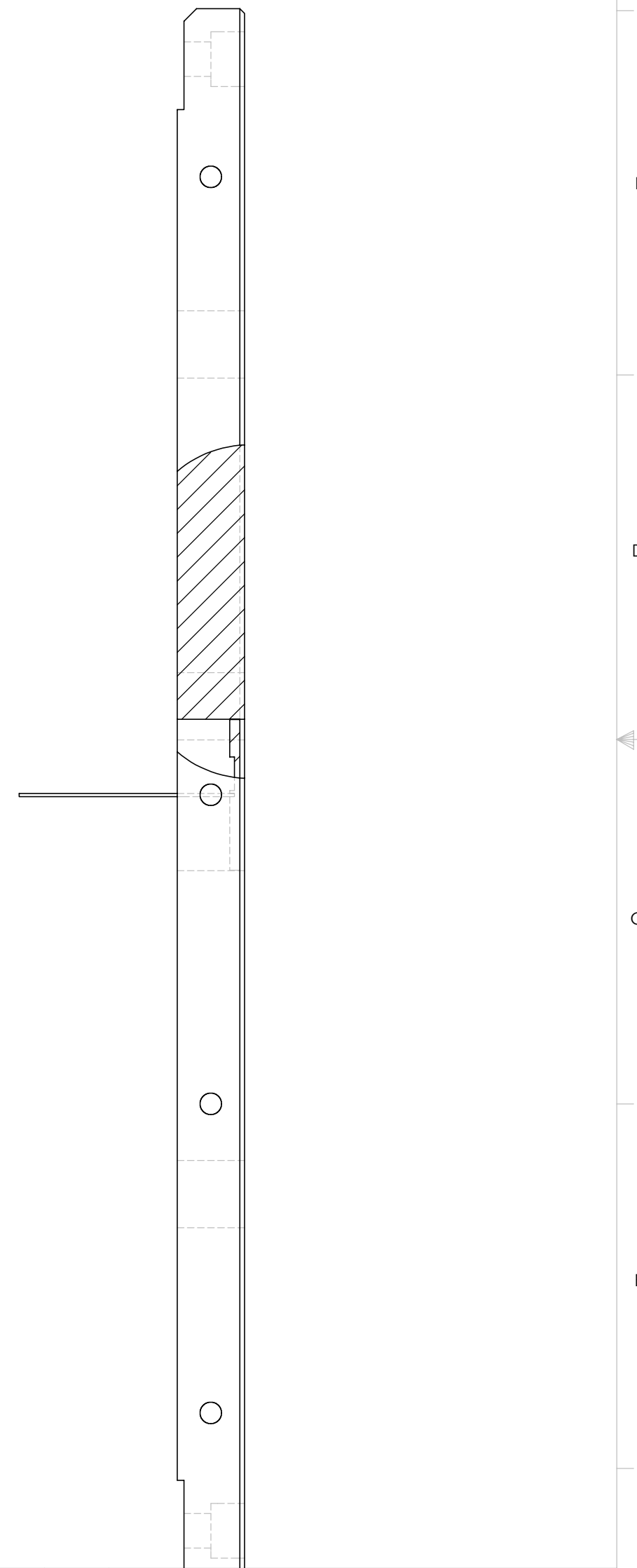
REV.	DATE	DCN #	DRAWING TREE #
A	2/9/2003		




**Parallel Motion Flexure
D020299-1
see sheet 27**

**Back Foundation Plate
D020298
see sheet 29**

**Parallel Motion Flexure
D020299-2
see sheet 27**



UNLESS OTHERWISE SPECIFIED:		DATE	NAME	 CALIFORNIA INSTITUTE OF TECHNOLOGY MASSACHUSETTS INSTITUTE OF TECHNOLOGY		
DIMENSIONS ARE IN INCHES		DRAWN	4/02	Hardham	SYSTEM	LASTI
TOLERANCES: .XX ± 0.020"		REDRAWN	Fall '02	Hammond	SUB-SYSTEM	HEPI
.XXX ± 0.005"		CHECKED	2/9/03	Kern	NEXT ASSY	
ANGULAR ± 30'				PART NAME		
MATERIAL		COMMENTS:		Back Foundation Plate Ass'y view with Flexure		
FINISH 32 RMS unless noted		1 Required for each actuator		SIZE	DWG. NO.	REV
				C	D020364-A-E	A
				SCALE:	1:1 unless noted	