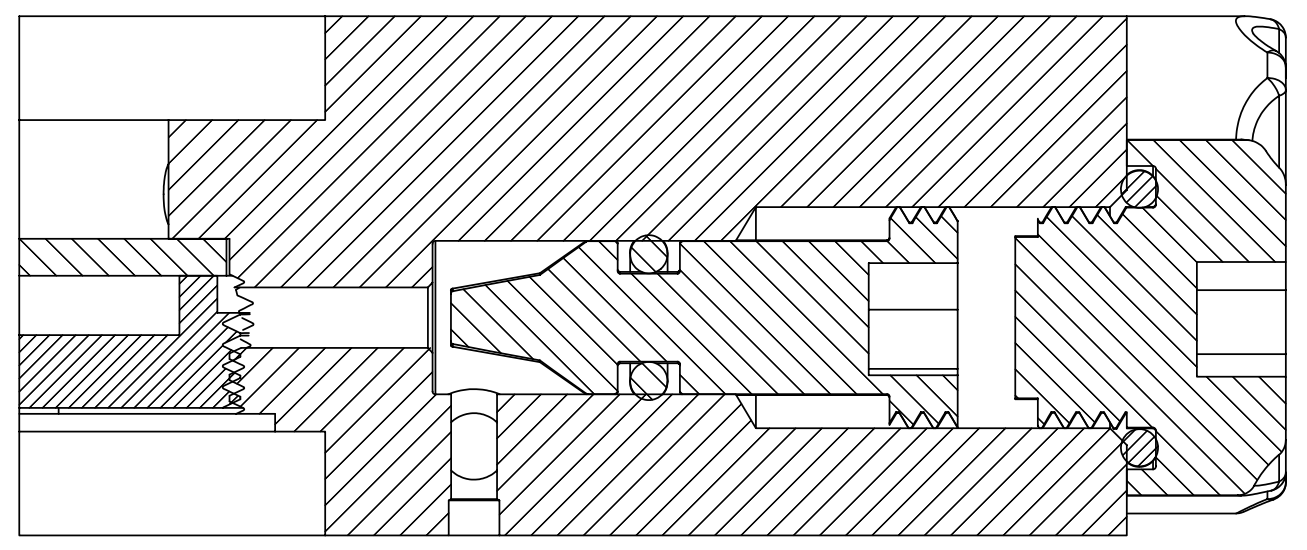
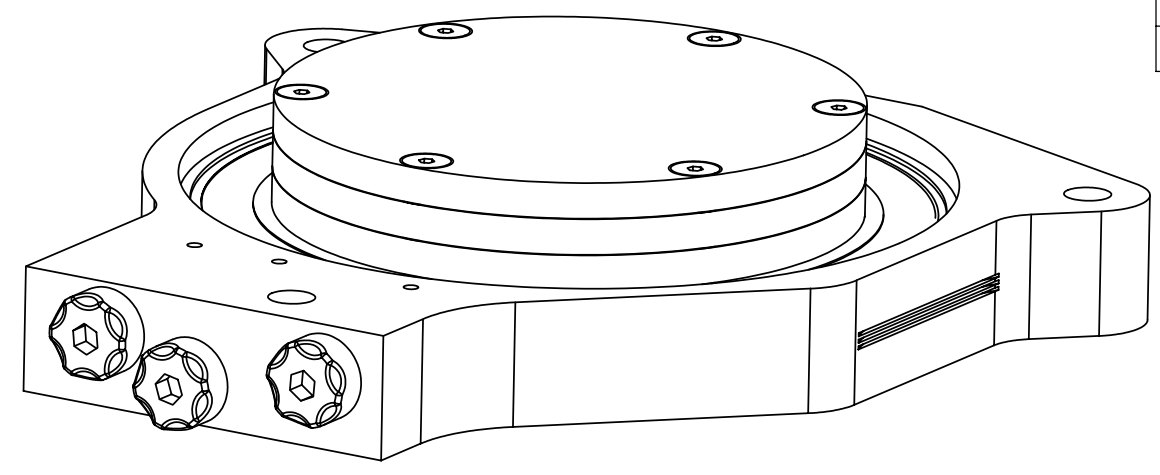
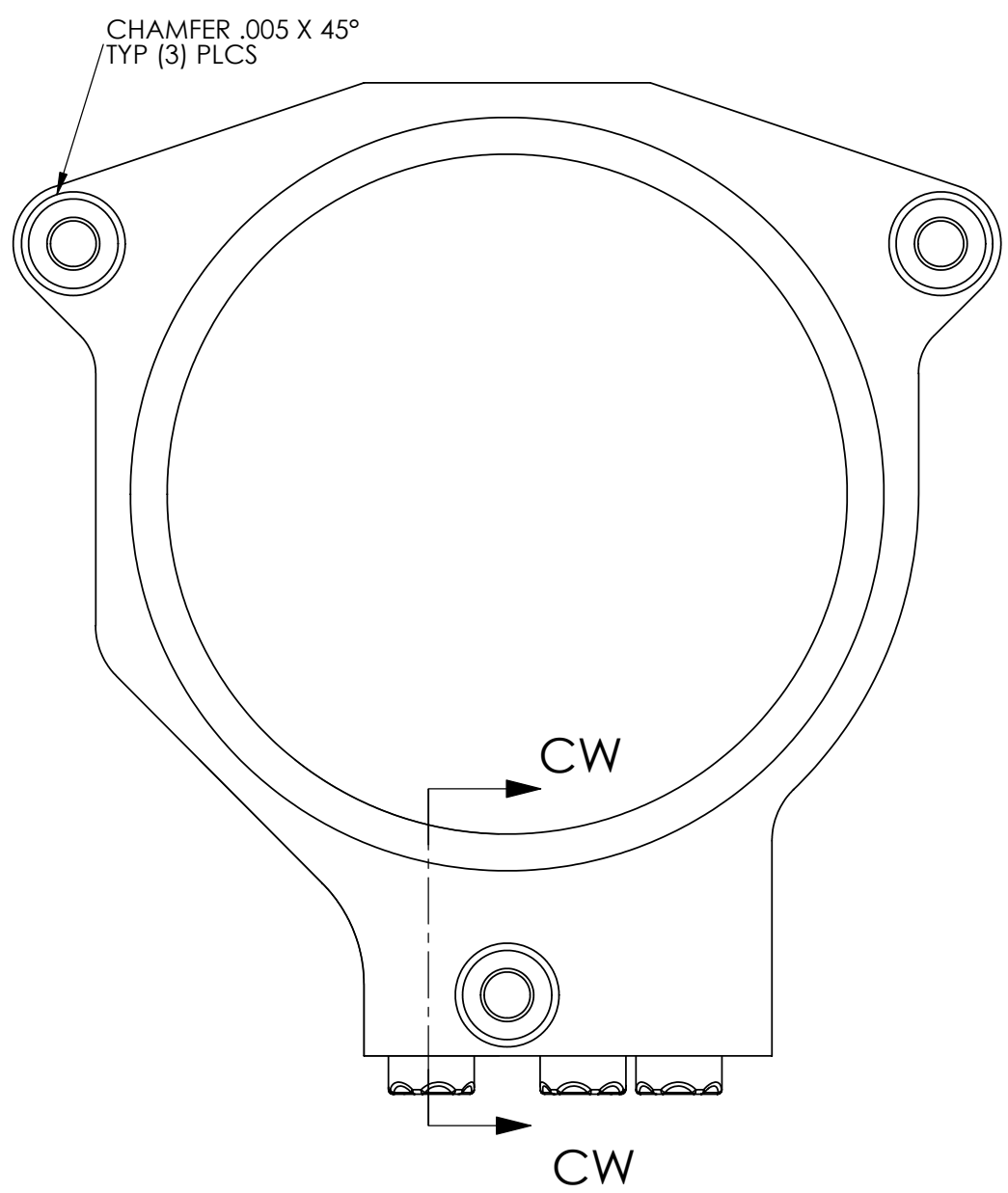
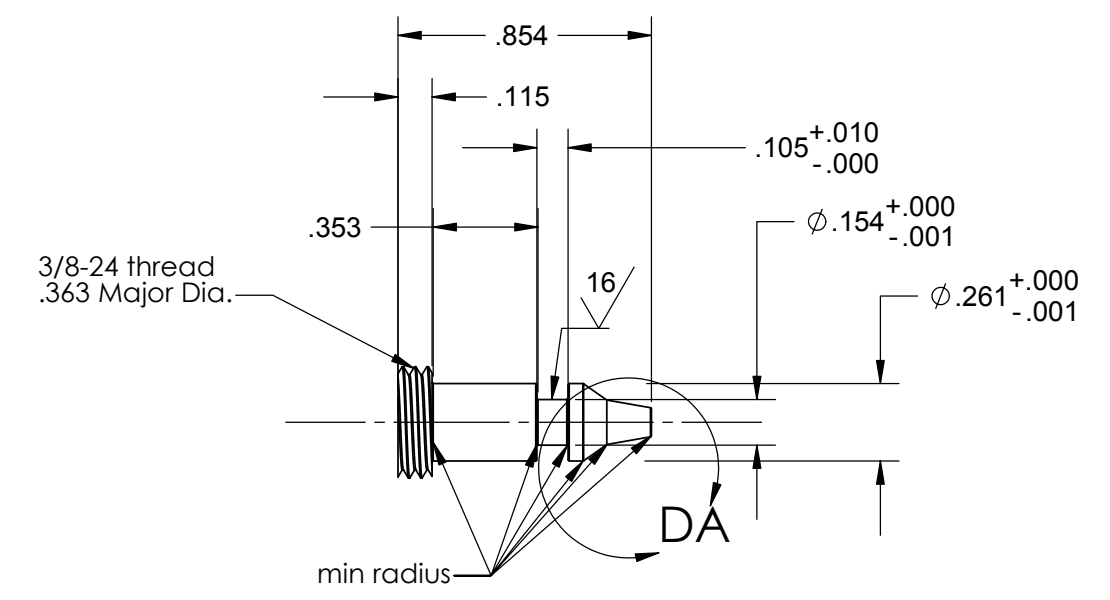
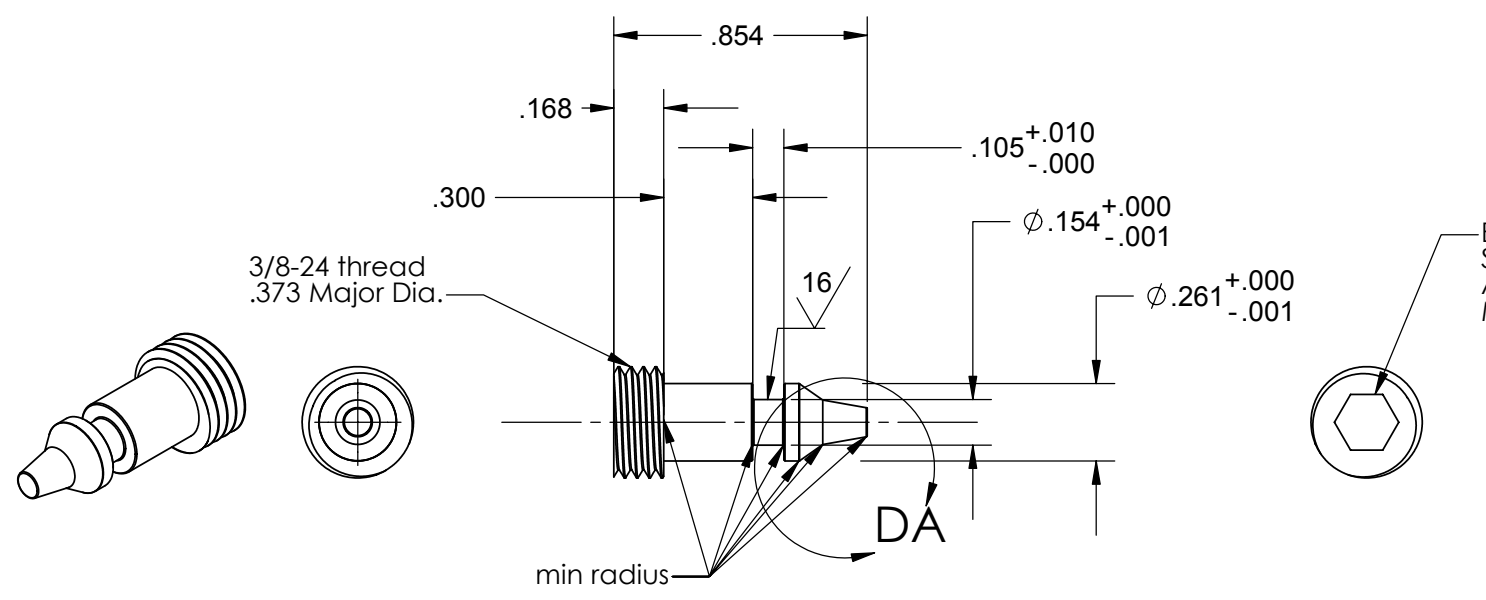


REV.	DATE	DCN #	DRAWING TREE #
A	Fall'02		
B	6/21/03	E030373-00-E	
C	4/27/04		
D	5/3/04	E040210-00-E	

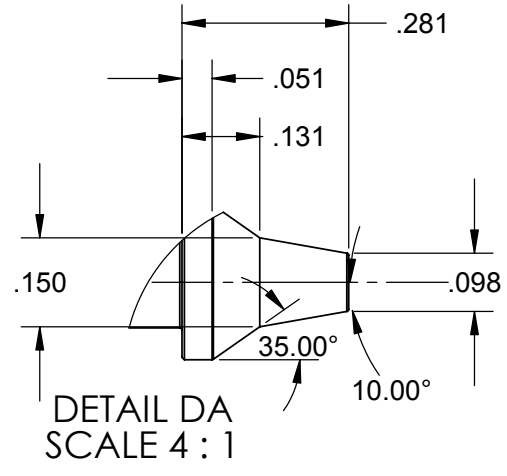


SECTION CW-CW
SCALE 4 : 1



**Actuation Plate
Small Pin Valve
D020359-D-E Part 1
Mat'l: 17-4 PH
(2) required**

**for use only on
D020365-B Manifold
Assembly**

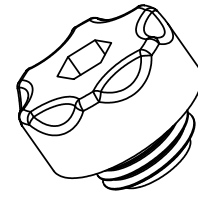
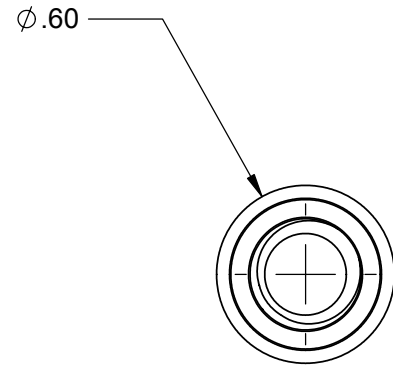


**Actuation Plate
Small Pin Valve
D020359-D-E Part 1A
Mat'l: 17-4 PH
(3) required**

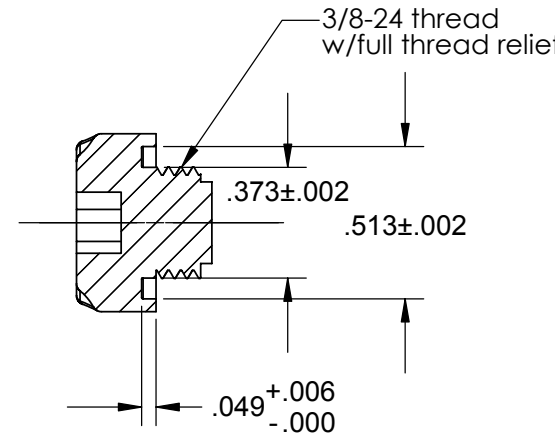
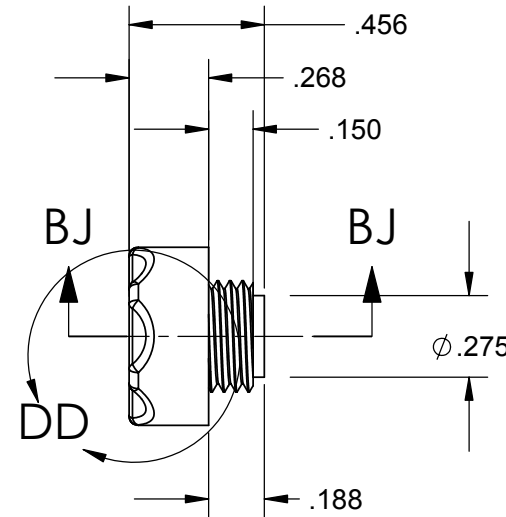
**for use only on
D020358-B Resistor
Stack Sub-Assembly**

UNLESS OTHERWISE SPECIFIED:		DATE	NAME	CALIFORNIA INSTITUTE OF TECHNOLOGY MASSACHUSETTS INSTITUTE OF TECHNOLOGY	
DIMENSIONS ARE IN INCHES		4/02	Hardham	SYSTEM LASTI	
TOLERANCES: .XX ± 0.020"		Fall' 02	Hammond	SUB-SYSTEM HEPI	
.XXX ± 0.005"		8/12/03	Spjeld	NEXT ASSY	
ANGULAR ± 30°		5/3/04	Coyne	PART NAME HEPI Actuation Plate, Plug and Small Pin Valve	
MATERIAL		COMMENTS:		SIZE DWG. NO.	REV
FINISH 32 RMS unless noted				C D020359 Sheet 1 of 2	D
				SCALE: 1:1 unless noted	Sht. No. 6 / 43

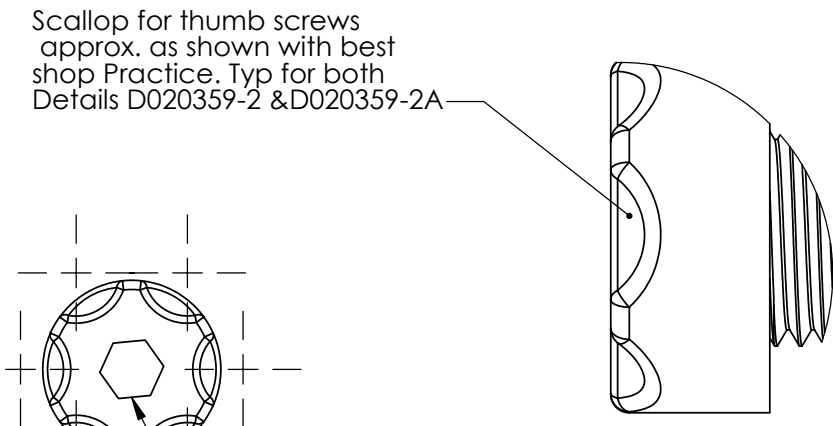
REV.	DATE	DCN #	DRAWING TREE #
A	Fall'02		
B	6/11/03	E030373-00-E	
C	4/27/04		
D	5/3/04	E040210-00-E	



**Actuator Plate Plug
D020359-D-E Part 2
Mat'l: 304-L
(5) required**

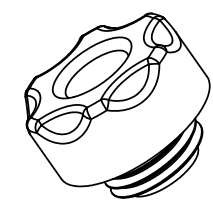
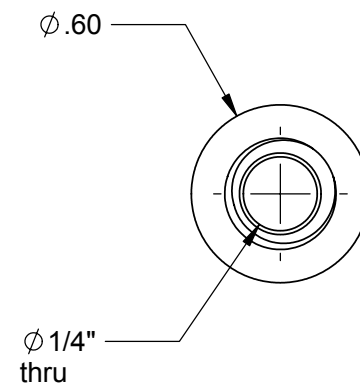


SECTION BJ-BJ
SCALE 2 : 1

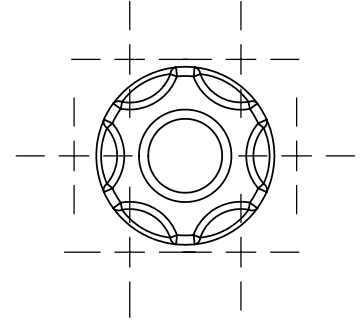
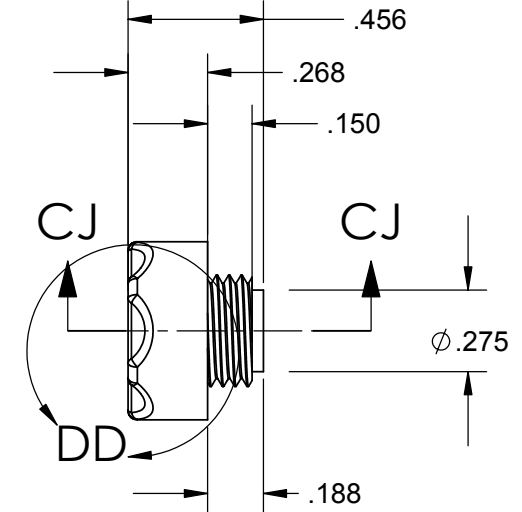


DETAIL DD
SCALE 4 : 1

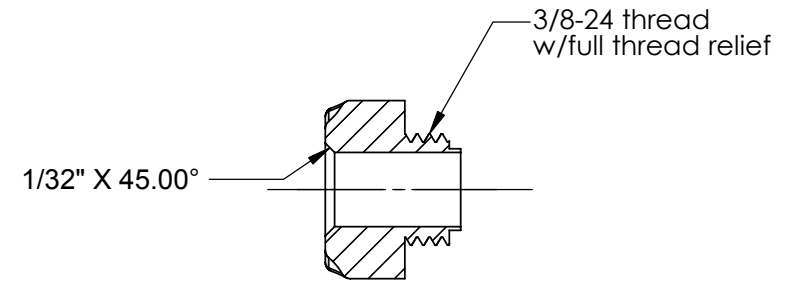
Broach for
Standard 3/16
Allen Wrench Hex
.150 depth



**Actuator Plate Plug
D020359-B-E Part 2A
Mat'l: 6061-T6
(5) required**



SECTION CJ-CJ
SCALE 2 : 1



UNLESS OTHERWISE SPECIFIED:		DATE	NAME	LIGO CALIFORNIA INSTITUTE OF TECHNOLOGY MASSACHUSETTS INSTITUTE OF TECHNOLOGY	
DIMENSIONS ARE IN INCHES		4/02	Hardham	SYSTEM	LASTI
TOLERANCES: .XX ± 0.020"		Fall' 02	Hammon	SUB-SYSTEM	HEPI
.XXX ± 0.005"		8/12/03	Spjeld	NEXT ASSY	
ANGULAR ± 30°		5/3/04	Coyne	PART NAME HEPI Actuation Plate, Plug and Small Pin Valve	
MATERIAL	6061-T6	COMMENTS:		SIZE	DWG. NO.
FINISH	32 RMS unless noted	ANODIZE ALL ALUMINUM COLOR: CLEAR		C	D020359 Sheet 2 of 2
				SCALE:	1:1 unless noted
				Shf. No. 7 / 43	