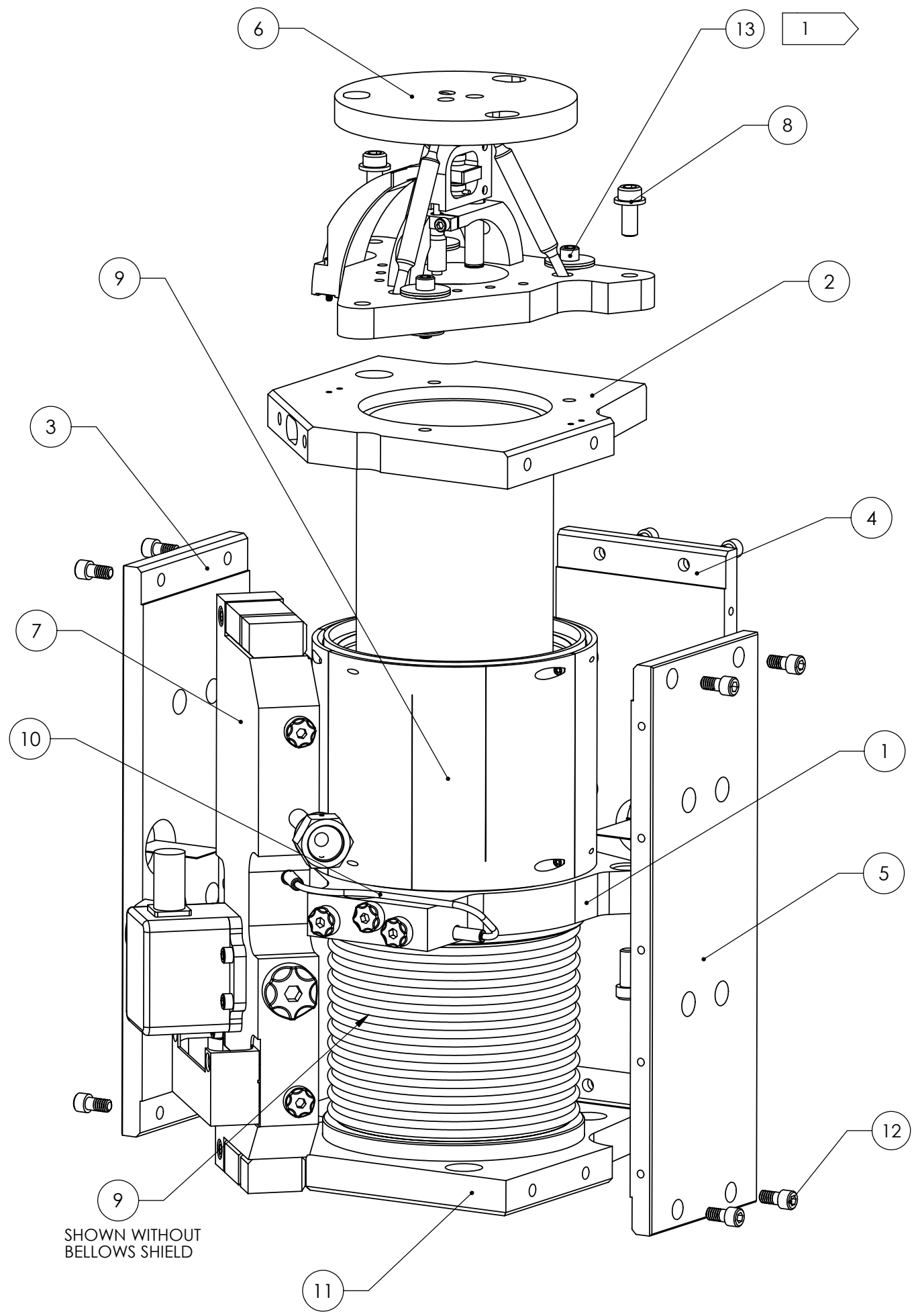


REV.	DATE	DCN #	DRAWING TREE #
A	Fall'02		
B	7/25/03	E030373-00-E	



1 For Shipping and Installation Only

ITEM NO.	QTY.	PART NO.	DESCRIPTION	MATERIAL / VENDOR	SHT. NO.
1	1	D020358-B	ACTUATOR PLATE ASSEMBLY		3
2	1	D020361-B	TOP FOUNDATION PLATE ASSEMBLY		12
3	1	D020363-B	SIDE FOUNDATION ASSEMBLY		24
4	1	D020364-B	BACK FOUNDATION PLATE ASSEMBLY		28
5	1	D020296-A	RIGHT SIDE FOUNDATION PLATE		27
6	1	D020368-A	TRIPOD ASSEMBLY		37
7	1	D020365-B	MANIFOLD ASSEMBLY		30
8	6	-	SCH CAP SCR 7/16-20 ~ 75 W/ WSH ASSEMBLY		-
9	2	D020360-B	BELLOWS ASSEMBLY		20
10	1	D020374-00	ACTUATOR BLEED TUBE ASSEMBLY		42
12	1	D020362-B	BOTTOM FOUNDATION PLATE ASSEMBLY		16
13	14	-	S.H.C.S. 1/4-20 x 0.50	SST	-
15	3	-	LIMIT ASSEMBLY		-

UNLESS OTHERWISE SPECIFIED:	DATE	NAME	CALIFORNIA INSTITUTE OF TECHNOLOGY MASSACHUSETTS INSTITUTE OF TECHNOLOGY	
DRAWN	4/02	Hardham	SYSTEM	LASTI
REDRAWN	Fall '02	Hammond	SUB-SYSTEM	HEPI
REDRAWN	7/25/03	Sjeld	NEXT ASSY	
CHECKED	3/9/03	Kern	PART NAME	HEPI Actuator Exploded Assembly
MATERIAL	COMMENTS:		SIZE DWG. NO.	REV
FINISH	120 RMS unless noted		C DO20357	B
			SCALE: 1:2	Sht. No. 2 / 43