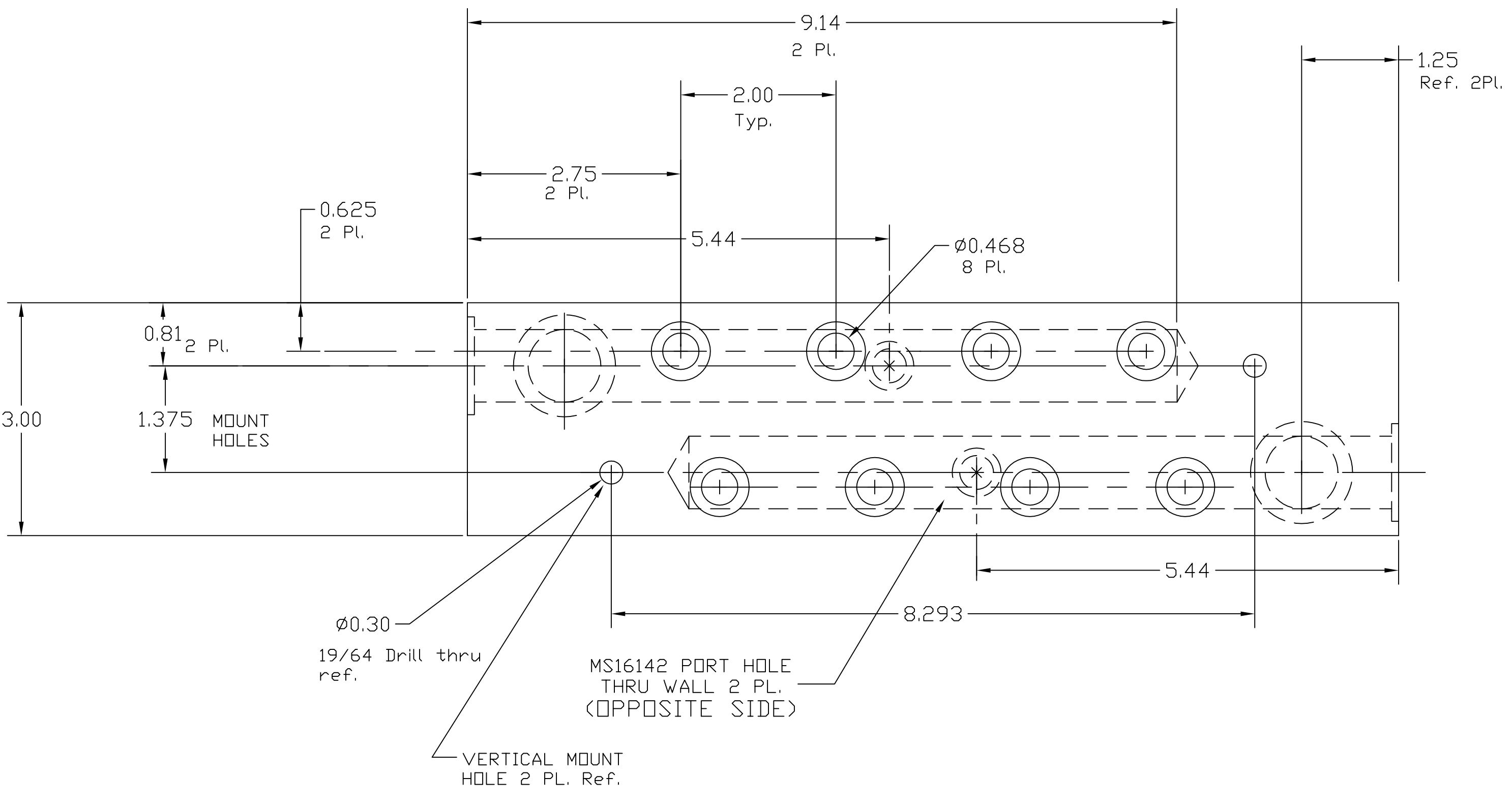
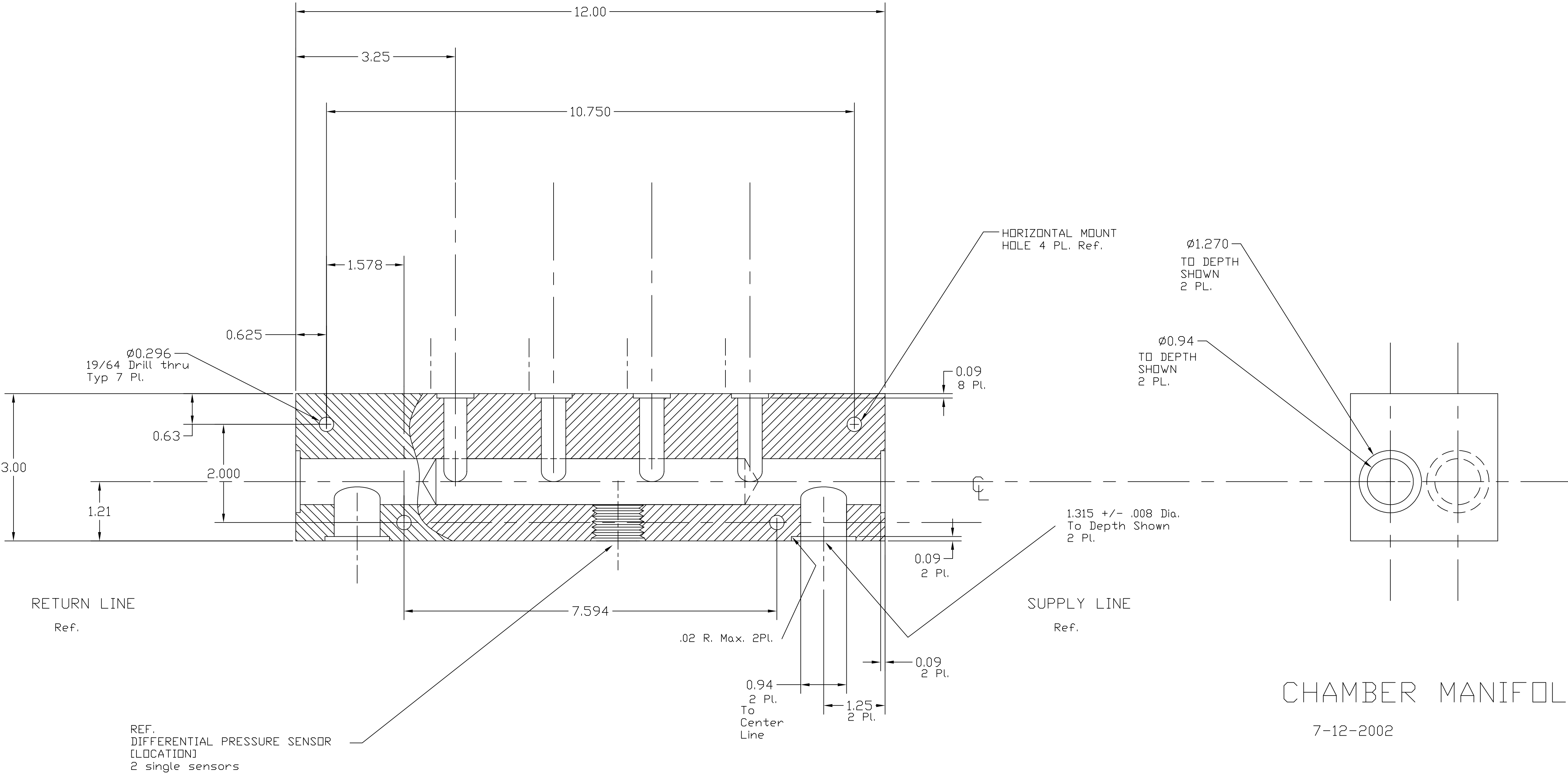


NOTES: (UNLESS OTHERWISE SPECIFIED)



REF. STAINLESS STEEL TUBING @Ass'y
 1" X .035 WALL [SUPPLY AND RETURN]
 5" X .032 WALL [TO AND FROM SECONDARY MANIFOLD]
 ARC WELDED CONSTRUCTION



MAKE 1 TOTAL

REF	QTY	PART or DRWG No.	DESCRIPTION	MATERIAL
PARTS and MATERIAL LIST				
				LIGO CALIFORNIA INSTITUTE OF TECHNOLOGY MASSACHUSETTS INSTITUTE OF TECHNOLOGY
				MAIN HYDRAULIC MANIFOLD CHAMBER
XXX		XXX		NEW-RELEASE
LIGO-E020691-00-R		KENM		7-12-02
D020349-A		D		D020349-A
SCALE 1:1		SHEET 1 OF 1		

UNLESS OTHERWISE SPECIFIED
 DIMENSIONS ARE IN INCHES

TOLERANCES:
 FRACTIONAL ± 1/16
 ANGULAR ± .25°
 ANGULAR MACH ± BEND ±
 TWO PLACE DECIMAL ± .01

THREE PLACE DECIMAL ± .005
 FINISHED SURFACE RMS 63
 BREAK CORNERS IN .015 OUT .015
 REMOVE ALL BURRS

MATERIAL: 304 S. St.
 HEAT TREAT:
 FINISH:

USED ON: XXX
 NEXT ASSY: XXX

DWG. NO.	DESCRIPTION
XXX	REFERENCE DRAWINGS