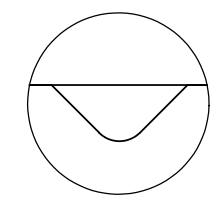
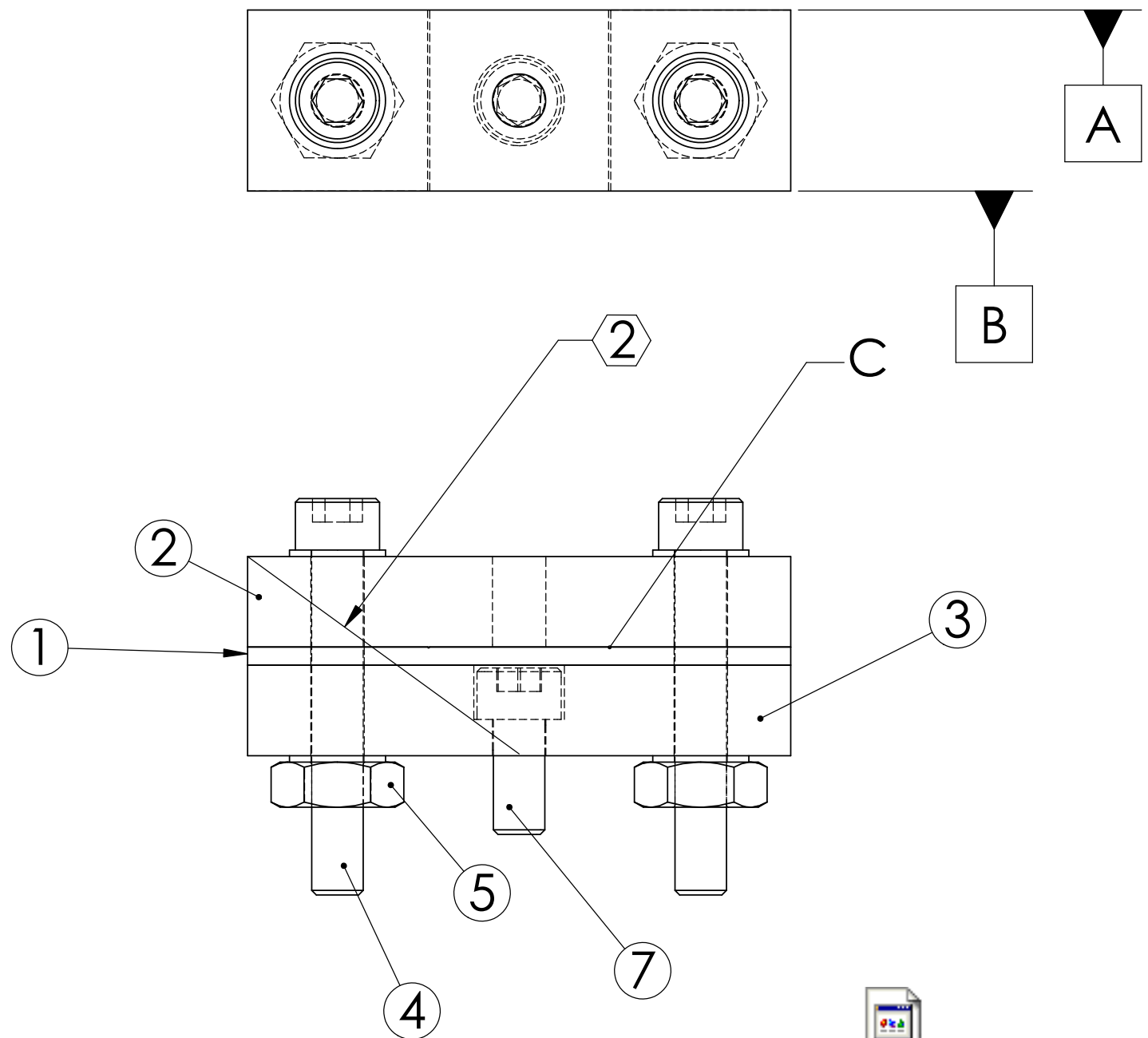
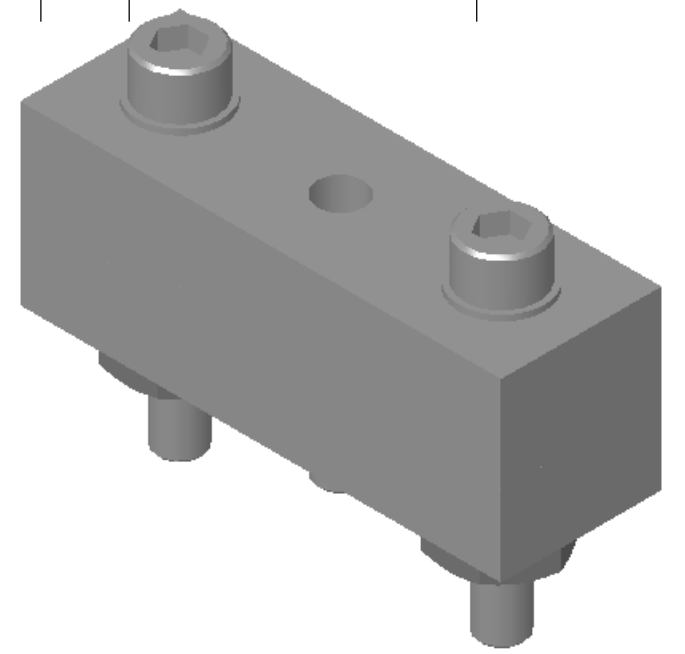


REV.	DATE	DCN #	DRAWING TREE #
A	24 JUNE 2004	E040303-00	


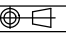


DETAIL C   
INDICATES ORIENTATION OF THE  
GROOVE IN THE SHIM  
(AS UPWARDS)

SCALE 150 : 1

ITEM NO	REQ.	SPARE	TOT.	PART NUMBER	DESCRIPTION	MATERIAL
7	1	1	2		SST SOCKET HEAD CAP SCREW #4-40 UNC-3A X 0.25 LONG	300 SSTL
6	4	2	6		FLAT WASHERS NAS 620-C4L (OR EQUIV.)	300 SSTL
5	2	1	3		SST HEX NUT #4	
4	2	1	3		SST SOCKET HEAD CAP SCREW #4-40 UNC-3A X 0.75 LONG	300 SSTL
3	1	0	1	D020202	LOWER WIRE CLAMP INSIDE	300 SSTL
2	1	0	1	D020203	LOWER WIRE CLAMP OUTSIDE	300 SSTL
1	1	0	1	D020204	LOWER WIRE CLAMP SHIM	300 SSTL

D020316\_Asem\_lowerwireclamp.step

NOTES: (UNLESS OTHERWISE SPECIFIED)		PARTS LIST	
1. FLY CUT DATUM -A- AND -B- SURFACE TO ACHIEVE FLATNESS OF .001 ② SCRIBE OR ETCH LINE APPROX AS SHOWN .02 DEEP .02 WIDE AFTER FLYCUTTING. 3. BOLTS AND NUTS SHOWN ARE FOR ASSEMBLY ONLY, PRIOR TO FIXING ON MCOPTIC		NAME	DATE
		DRAWN CIT	12/12/02
DIMENSIONS ARE IN INCHES TOLERANCES: .XX ± .001 .XXX ± .005 ANGULAR ± 0.5 °		 CALIFORNIA INSTITUTE OF TECHNOLOGY MASSACHUSETTS INSTITUTE OF TECHNOLOGY	
		<b>SYSTEM</b> ADVANCED LIGO	
SCALE: NTS PROJECTION:  SHEET 1 OF 1		<b>SUB-SYSTEM</b> SUS	
		<b>NEXT ASSY</b> MC: LOWER MASS	
SIZE DWG. NO. <b>D020316</b> REV. <b>A</b>		<b>PART NAME</b> ASSEMBLY LOWER WIRE CLAMP	
		FILE NAME/LOCATION:	