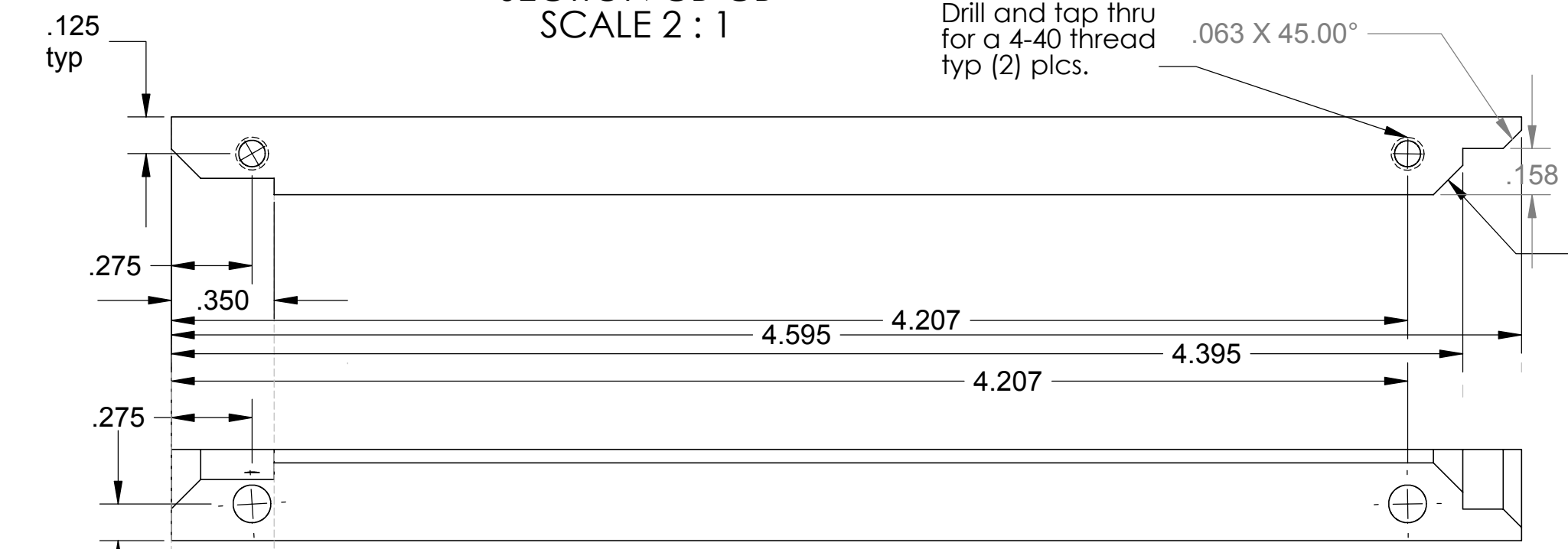


REV.	DATE	DCN #	DRAWING TREE #
A	2/9/2003		

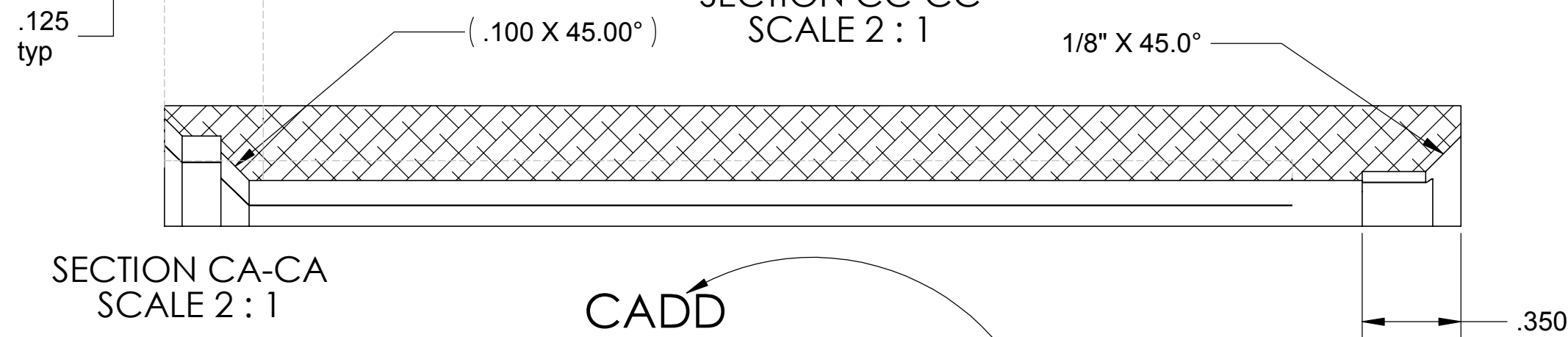
SECTION CB-CB
SCALE 2 : 1



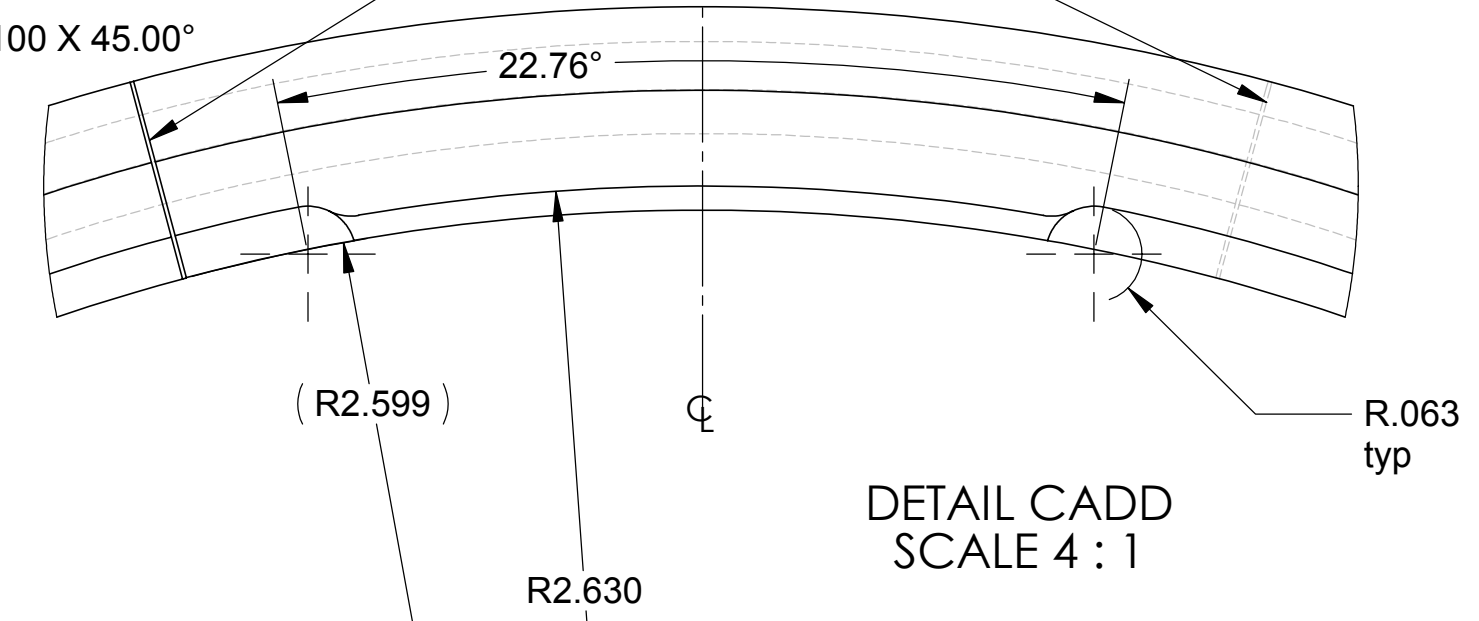
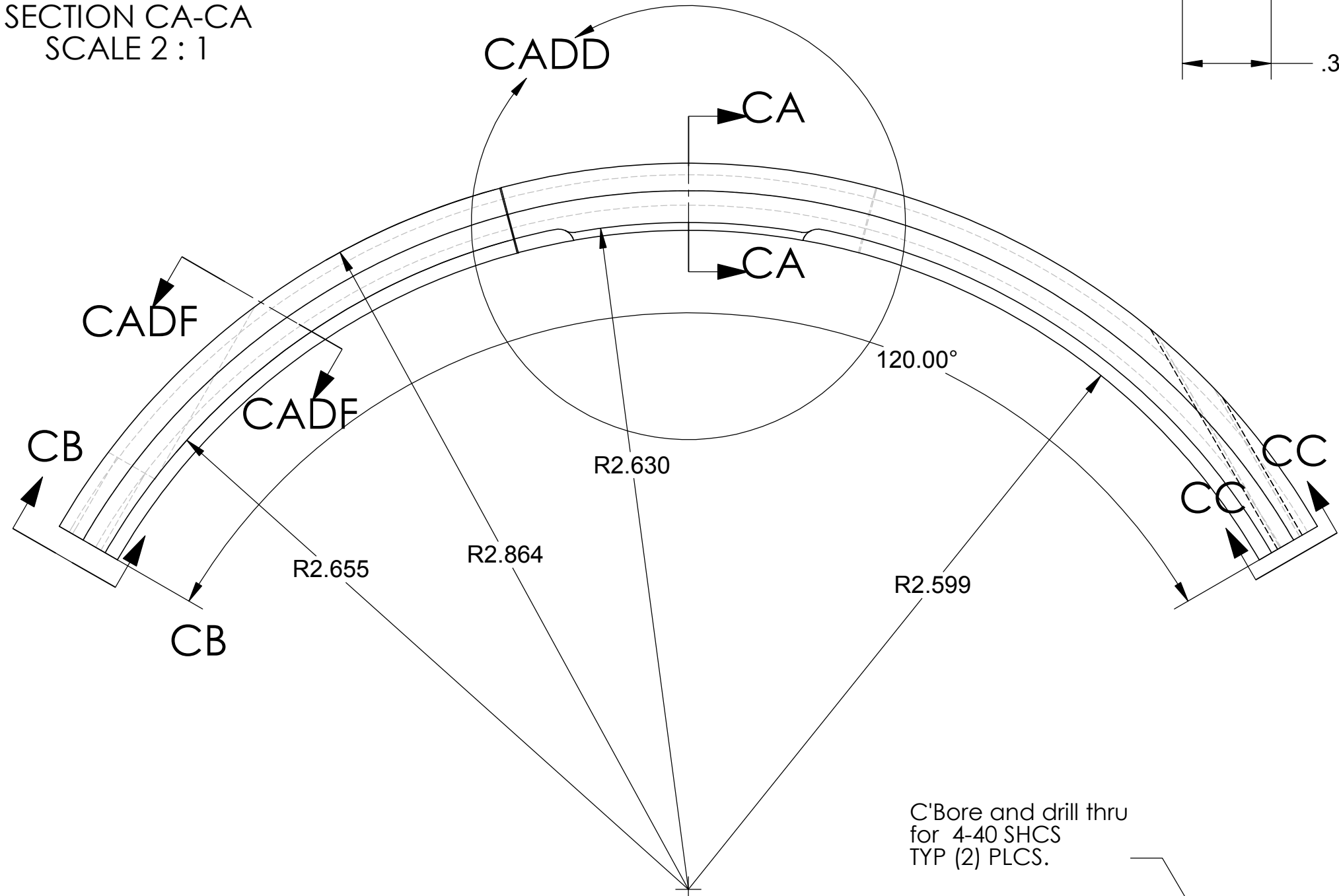
Drill and tap thru for a 4-40 thread typ (2) plcs.

Slit approx. 0.005" by wire EDM or best shop practice. Slit extends 0.60" away from bottom. Typ (2) places. Near side shown. Far side equal and opposite

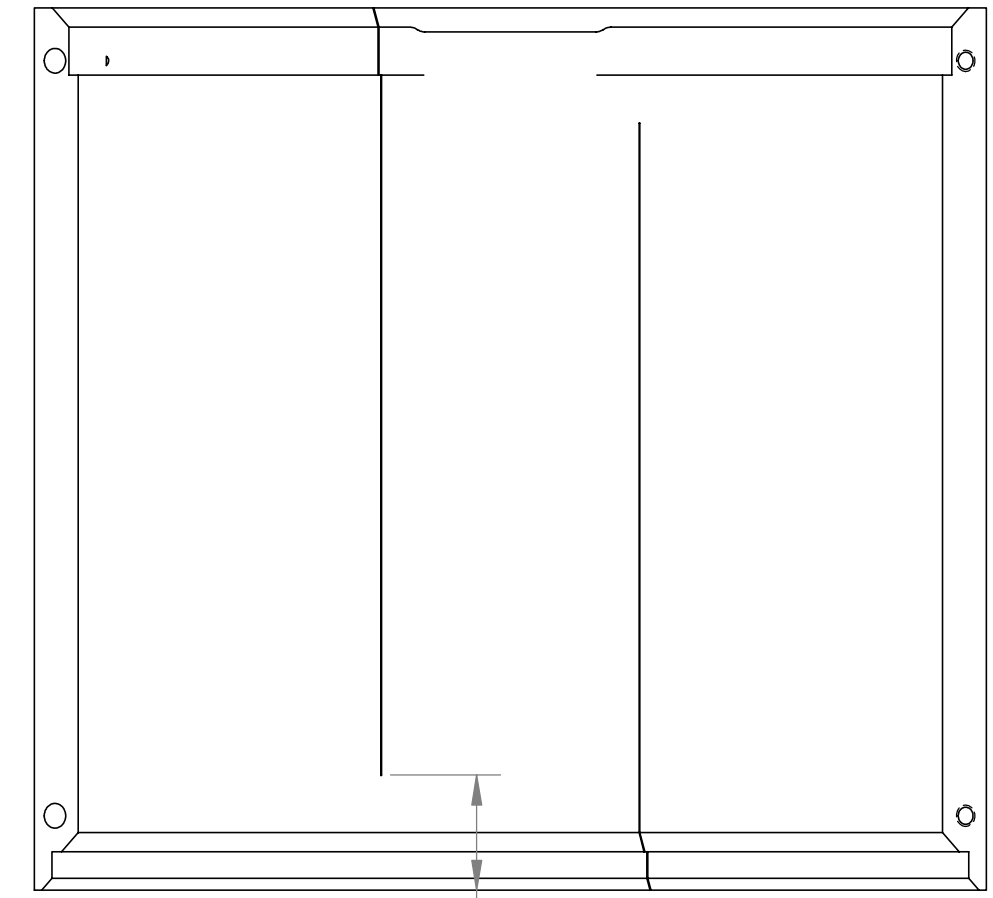
SECTION CC-CC
SCALE 2 : 1



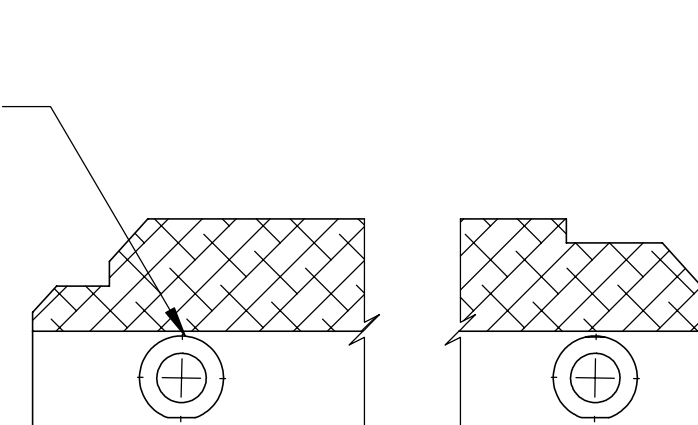
SECTION CA-CA
SCALE 2 : 1



DETAIL CADD
SCALE 4 : 1



.600 typ of (2) slit details (see detail CADD)



SECTION CADF-CADF
SCALE 2 : 1

C'Bore and drill thru for 4-40 SHCS TYP (2) PLCS.

UNLESS OTHERWISE SPECIFIED: DIMENSIONS ARE IN INCHES		DATE	NAME	CALIFORNIA INSTITUTE OF TECHNOLOGY MASSACHUSETTS INSTITUTE OF TECHNOLOGY	
TOLERANCES: .XX ± 0.02"	DRAWN	4/02	Hardham	SYSTEM	LASTI
.XXX ± 0.001"	REDRAWN	Fall '02	Hammond	SUB-SYSTEM	HEPI
ANGULAR ± 30'	CHECKED	2/9/03	Kern	NEXT ASSY	
MATERIAL: 6061-T6 Alum	COMMENTS:			PART NAME	Bellocs Shield
FINISH: 32 RMS unless noted				SIZE DWG. NO.	C D020302-A-E
				SCALE:	1:1 unless noted
				REV	A