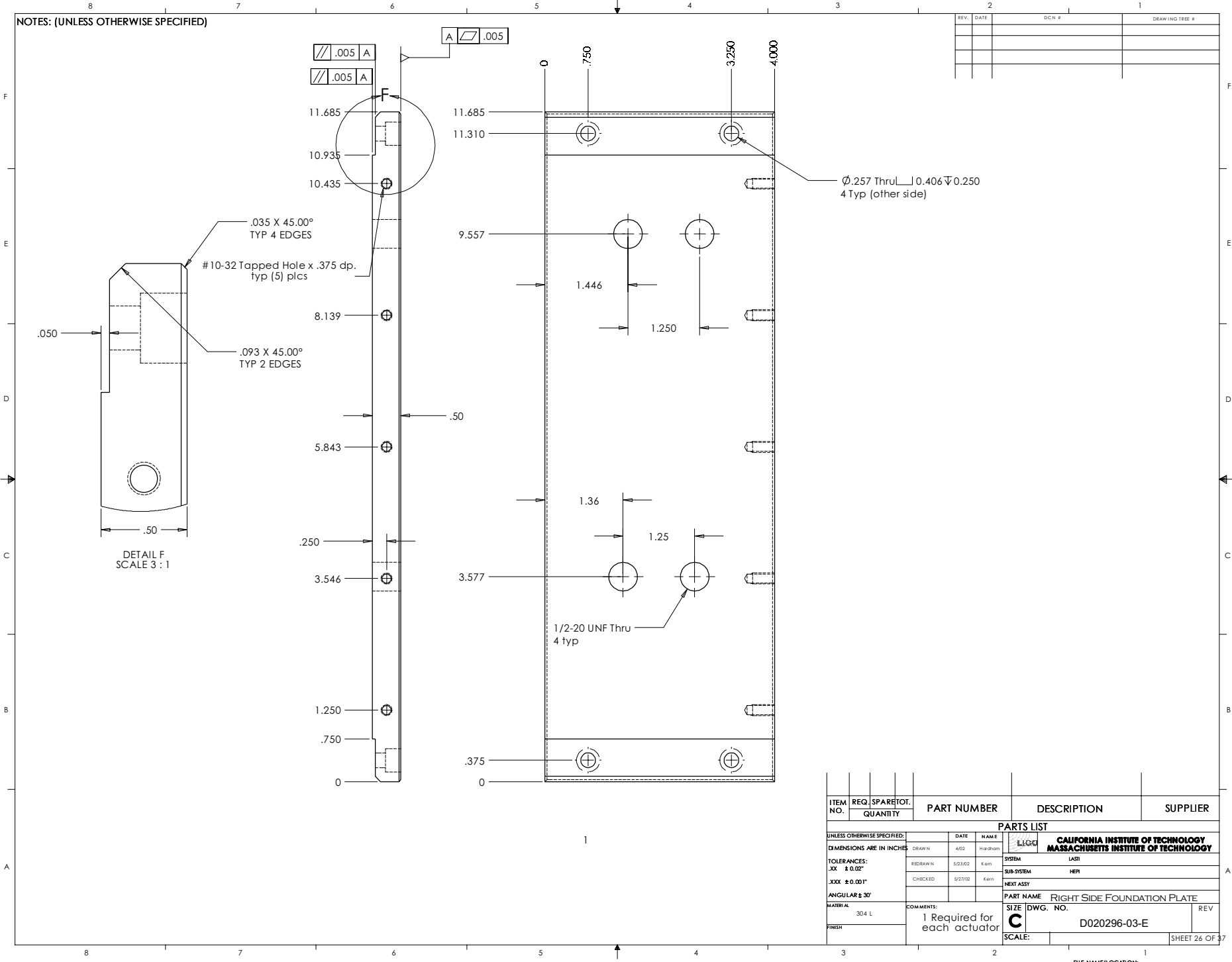


NOTES: (UNLESS OTHERWISE SPECIFIED)

REV.	DATE	DCN #	DRAWING TREE #



ITEM NO.	REQ. QUANTITY	SPARE	TOT. QUANTITY	PART NUMBER	DESCRIPTION	SUPPLIER
<b>PARTS LIST</b>						
UNLESS OTHERWISE SPECIFIED:				DATE	NAME	
DIMENSIONS ARE IN INCHES				DRAWN	4/02	Hogdrom
TOLERANCES:				REDRAWN	5/23/02	K. em
.XX ± 0.02"				CHECKED	9/27/02	Kern
.XXX ± 0.001"						
ANGULAR ± 30'						
MATERIAL				COMMENTS:		
304 L				1 Required for each actuator		
FINISH				SCALE:		
				PART NAME: RIGHT SIDE FOUNDATION PLATE		
				SIZE DWG. NO. C D020296-03-E		
				REV		
				SHEET 26 OF 37		