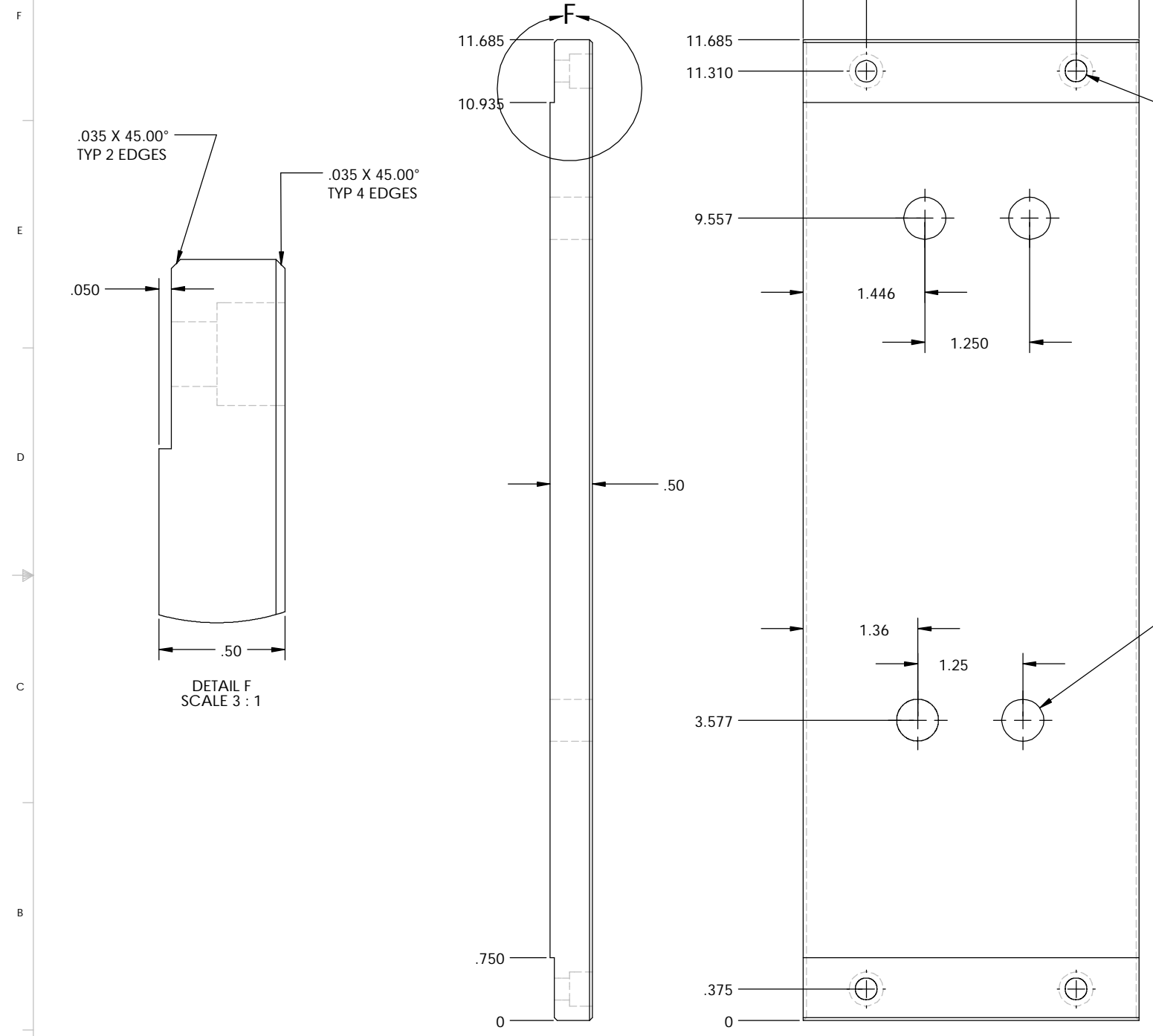


NOTES: (UNLESS OTHERWISE SPECIFIED)

REV.	DATE	DCN #	DRAWING TREE #



Ø .257 Thru 0.438 ± 0.250  
4 Typ (other side)

1/2-20 UNF Thru  
4 typ

DETAIL F  
SCALE 3 : 1

6 RQG: RUN ( GXFDMRQDOLFHQVH  
, QVWKFVRQD8 VH2 Q0

ITEM NO.	REQ. QUANTITY	SPARE QUANTITY	TOT. QUANTITY	PART NUMBER	DESCRIPTION	SUPPLIER
<b>PARTS LIST</b>						
UNLESS OTHERWISE SPECIFIED:				DATE	NAME	<b>CALIFORNIA INSTITUTE OF TECHNOLOGY</b> <b>MASSACHUSETTS INSTITUTE OF TECHNOLOGY</b>
DIMENSIONS ARE IN INCHES				DRAWN	Hardham	
TOLERANCES:				REDRAWN	Keim	
.XX ± 0.02"				CHECKED	Keim	
.XXX ± 0.001"				NEXT ASSY		
ANGULAR ± 30°				PART NAME		Right Side Foundation Plate
MATERIAL				SIZE		DWG. NO.
304 SS				C		D020296-00-E
FINISH				COMMENTS		REV
				1 Required for each actuator		
SCALE:						SHEET 26 OF 37