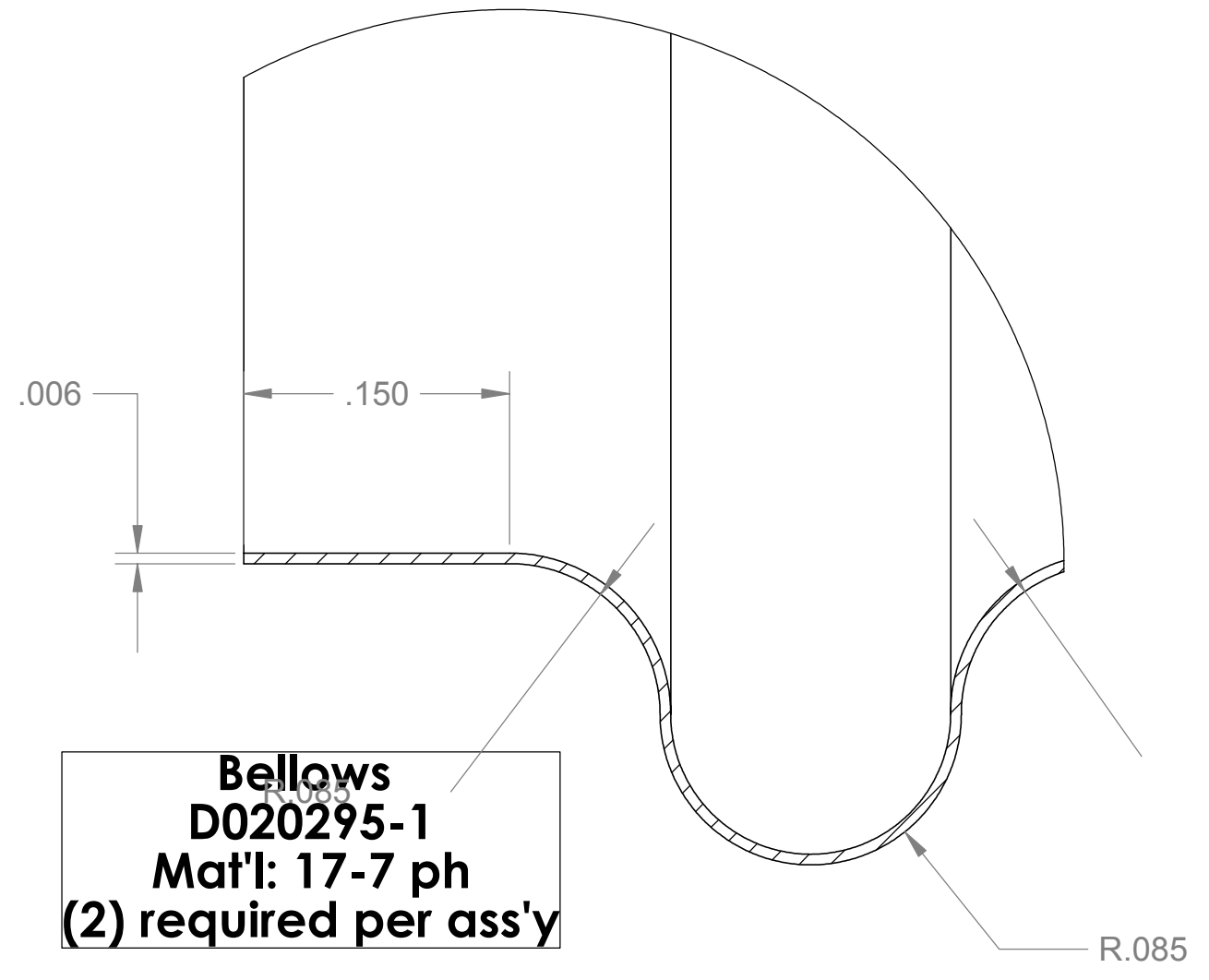
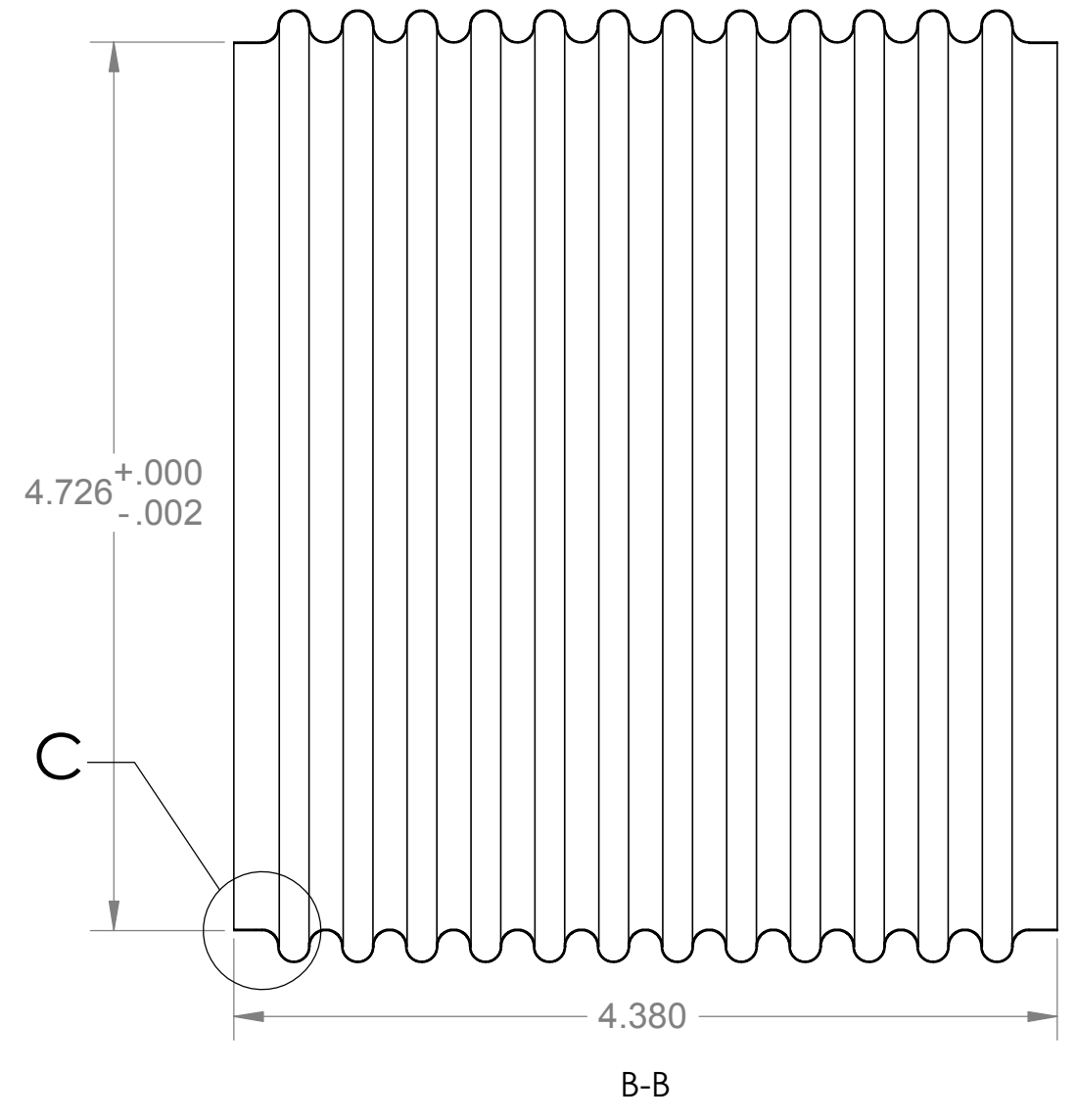
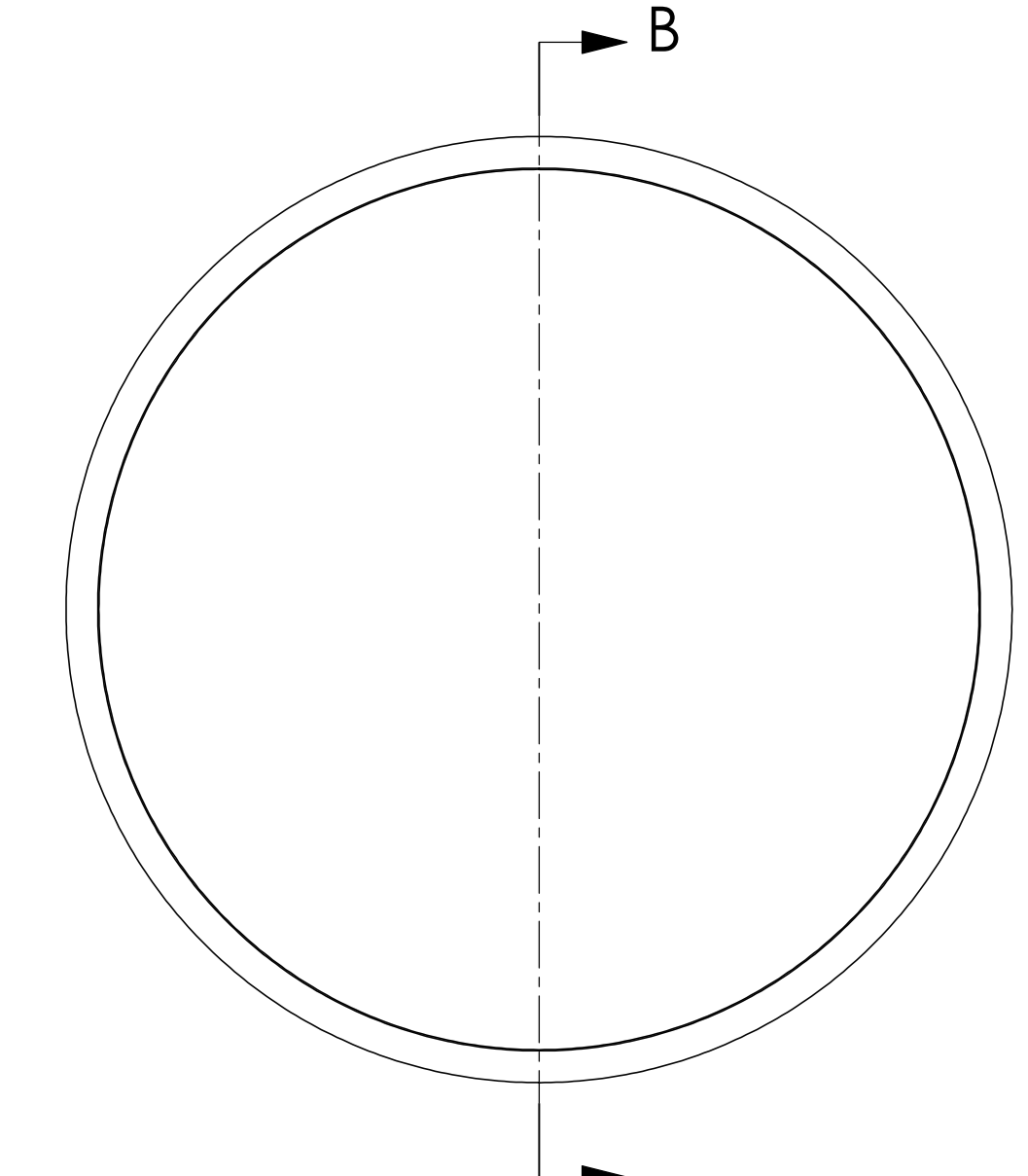


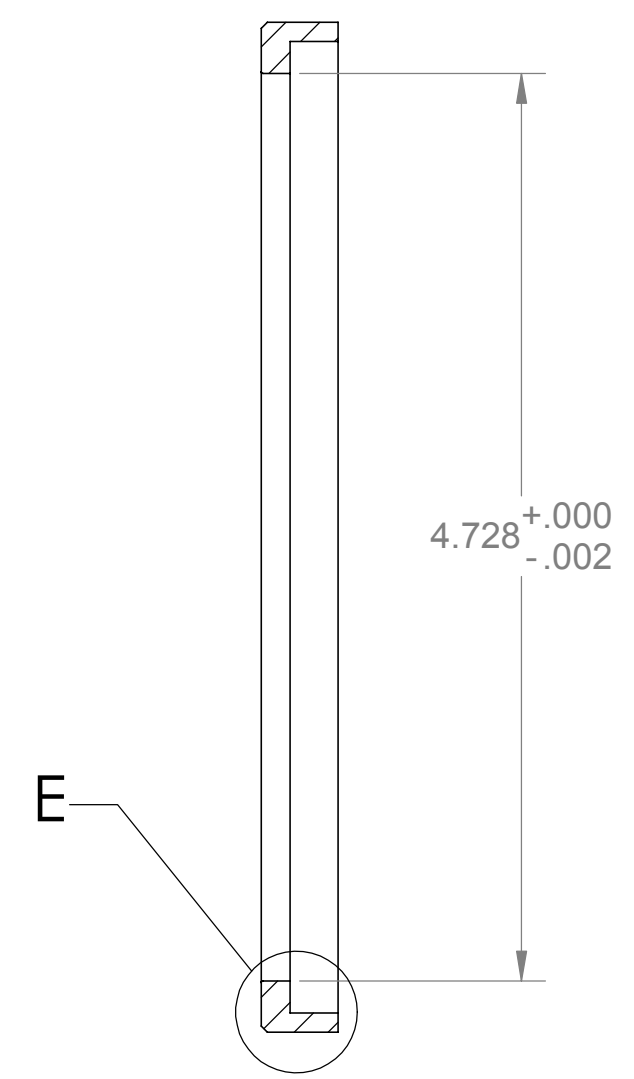
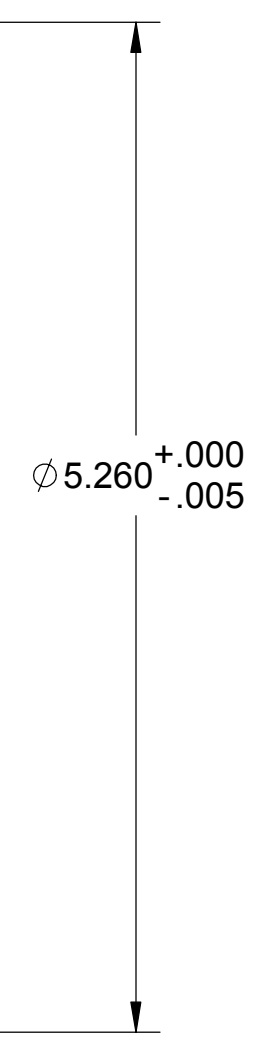
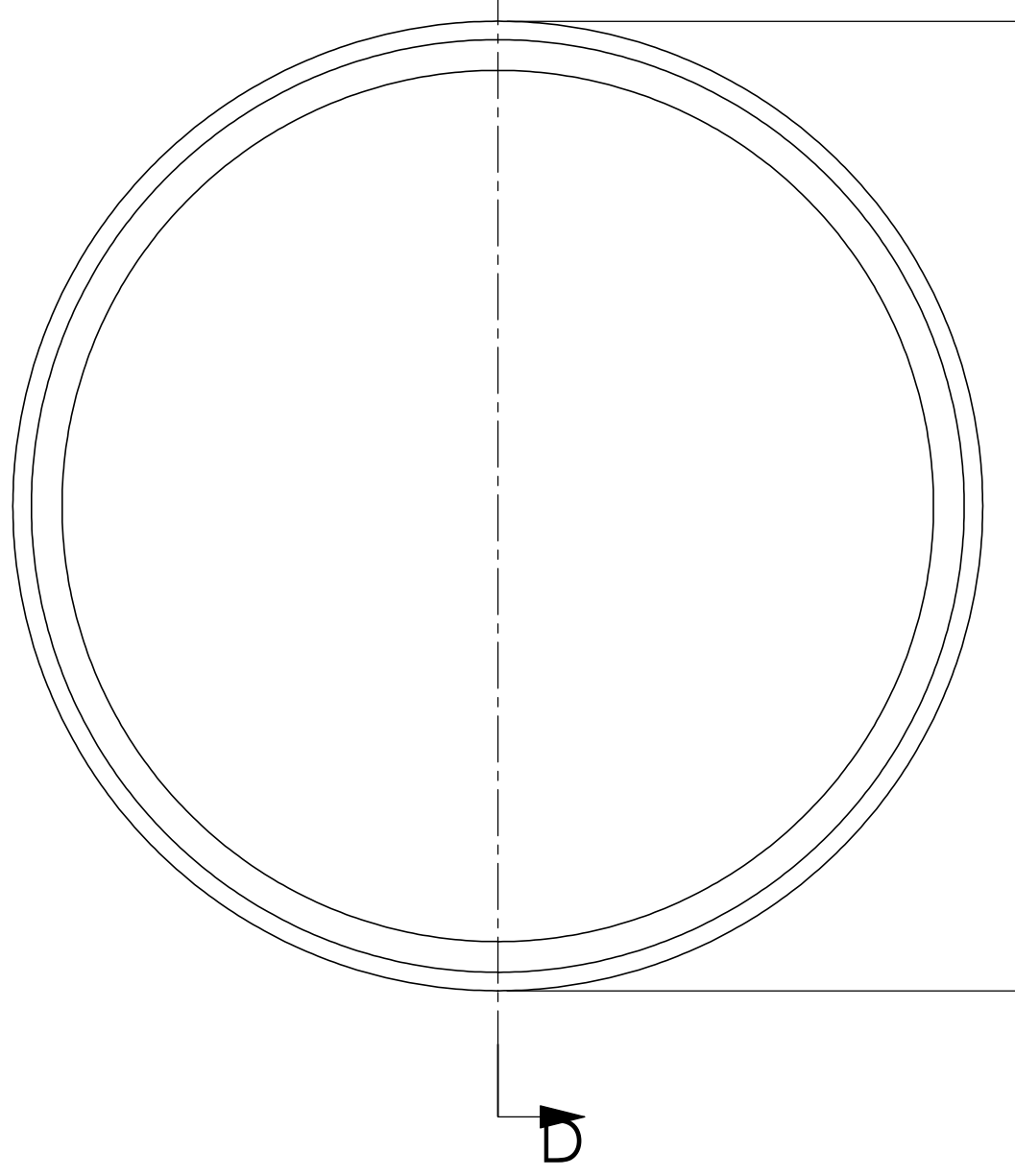
NOTES: (UNLESS OTHERWISE SPECIFIED)

REV.	DATE	DCN #	DRAWING TREE #
A	2/9/2003		

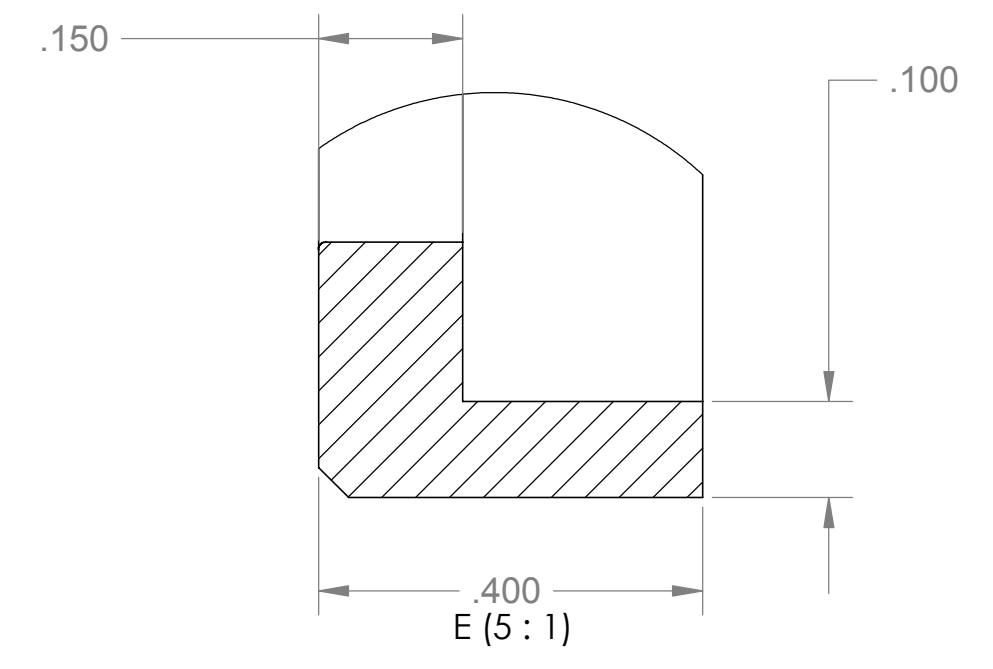
Refer to LIGO-E030066-A-E for design calculations of these bellows



**Bellows
D020295-1
Mat'l: 17-7 ph
(2) required per ass'y**



**Bellows Weld assist ring
D020295-2
Mat'l: 17-7 ph
(4) required per ass'y**



UNLESS OTHERWISE SPECIFIED:		DATE	NAME	CALIFORNIA INSTITUTE OF TECHNOLOGY MASSACHUSETTS INSTITUTE OF TECHNOLOGY	
DIMENSIONS ARE IN INCHES		4/02	Hardham		
TOLERANCES:				SYSTEM	LASTI
.XX ± 0.02"				SUB-SYSTEM	HEPI
.XXX ± 0.001"				NEXT ASSY	
ANGULAR ± 30'				PART NAME	Bellows & Shield Rings
MATERIAL	17-7 ph	COMMENTS:		SIZE	DWG. NO.
FINISH	32 RMS unless noted			C	D020295-A-E
				SCALE:	1:1 unless noted
					REV A

FILE NAME/LOCATION: