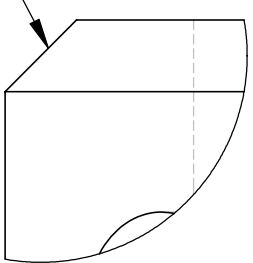


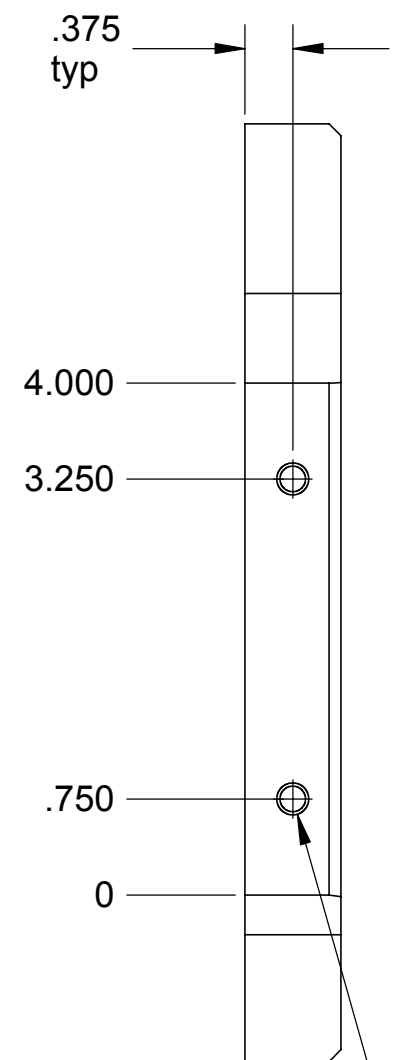
NOTES: (UNLESS OTHERWISE SPECIFIED)

REV.	DATE	DCN #	DRAWING TREE #
A	2/9/2003		

.093 X 45.00°
Typ all edges
this surface

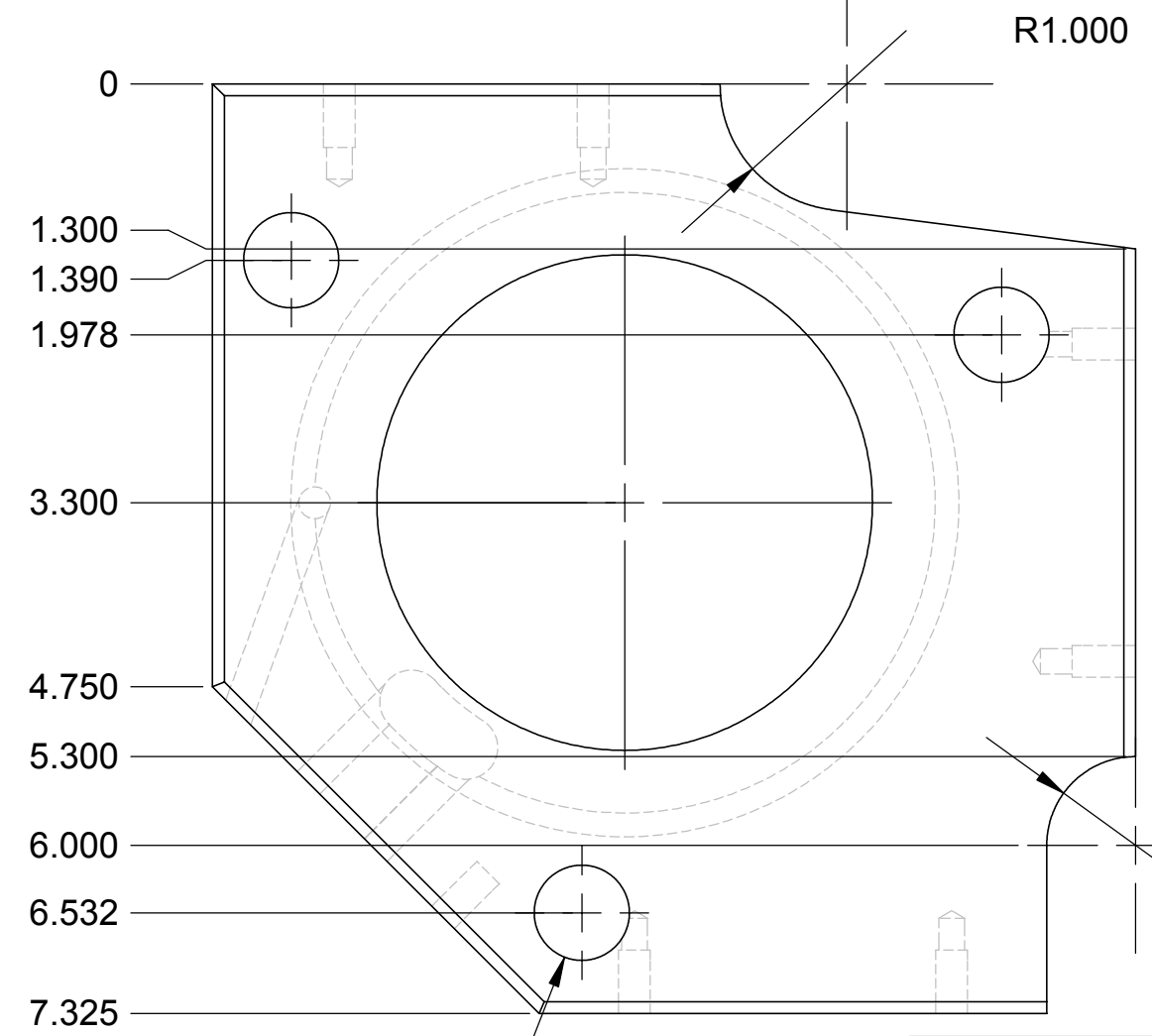
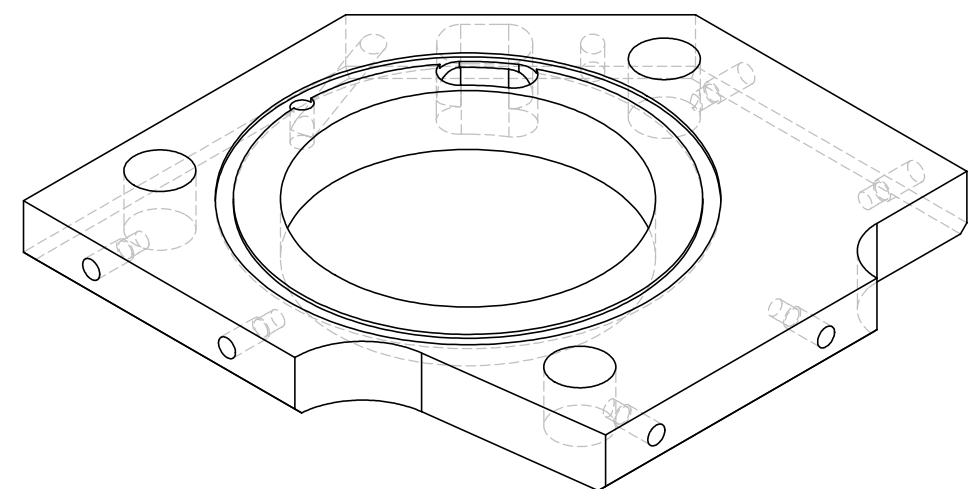
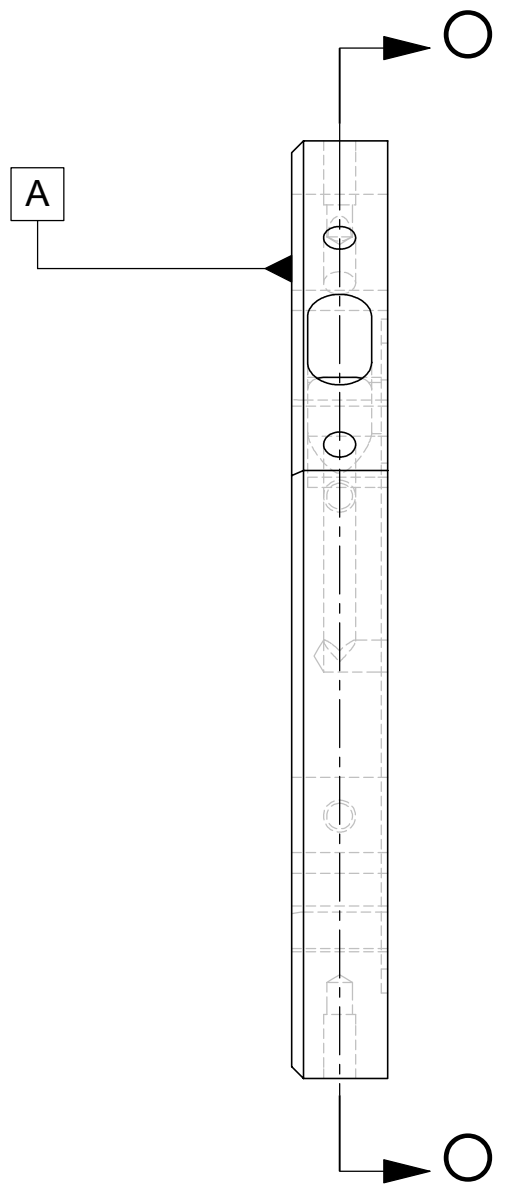
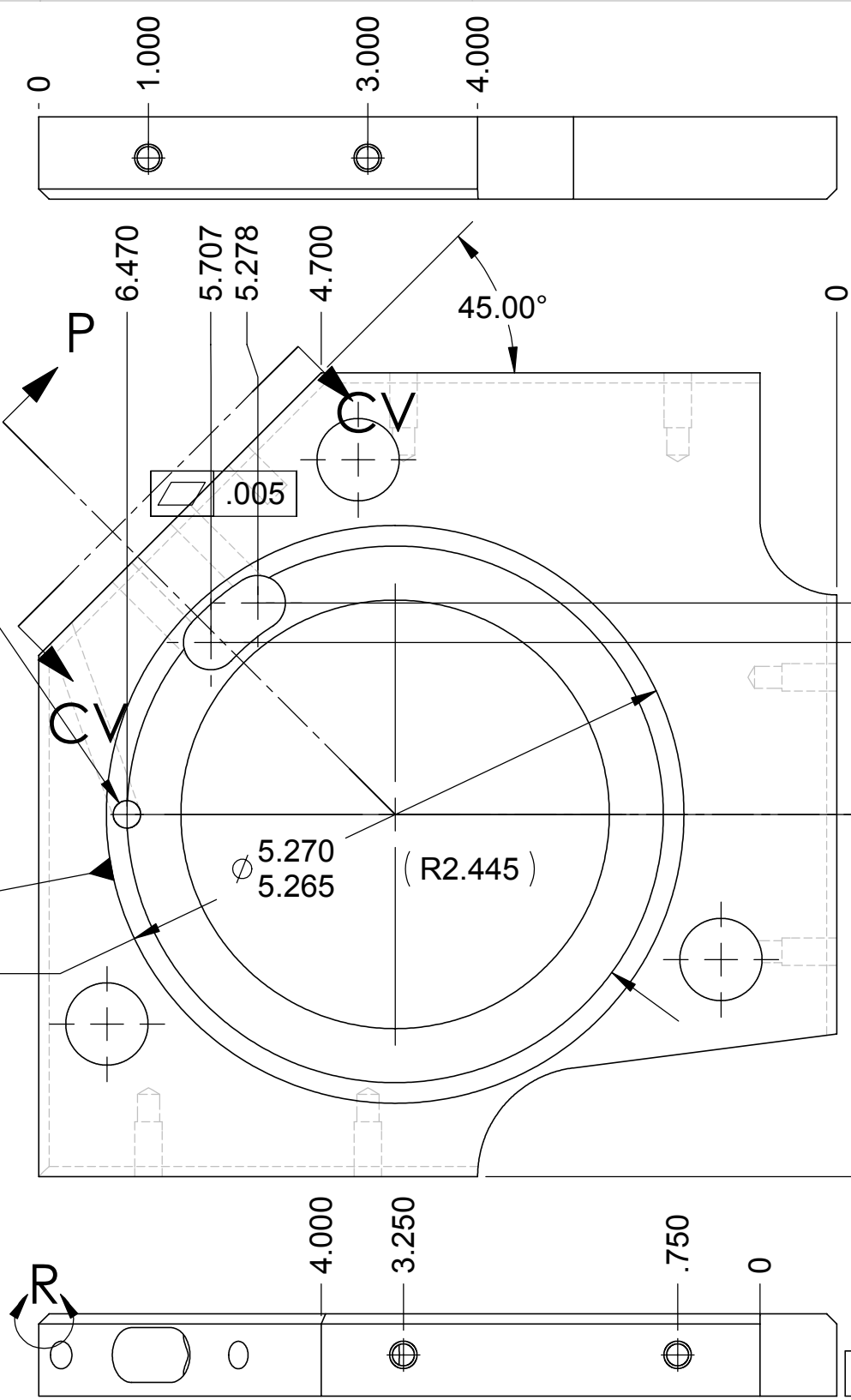


DETAIL R
SCALE 4 : 1



(ϕ .201 x .75
for a 1/4-20 tapped hole
typ (6) plcs

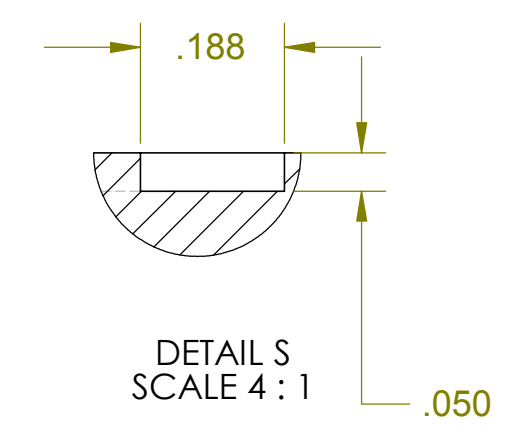
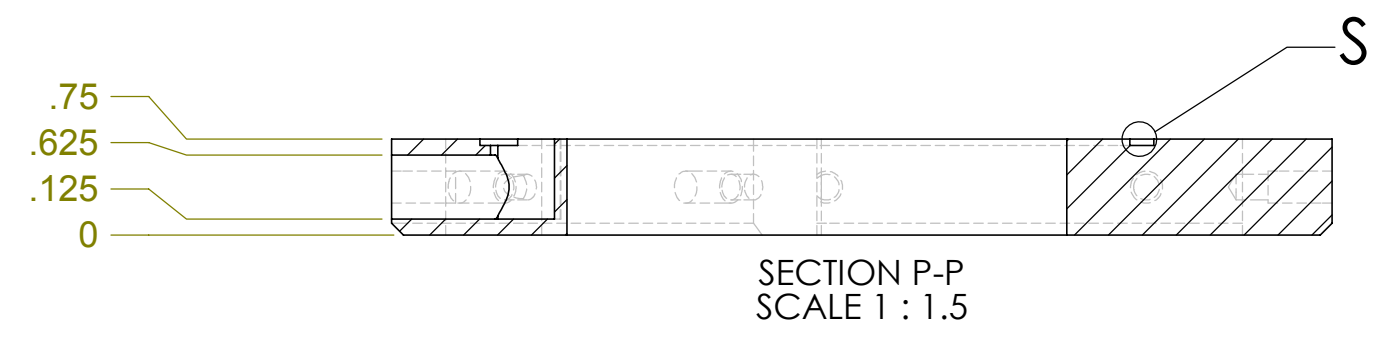
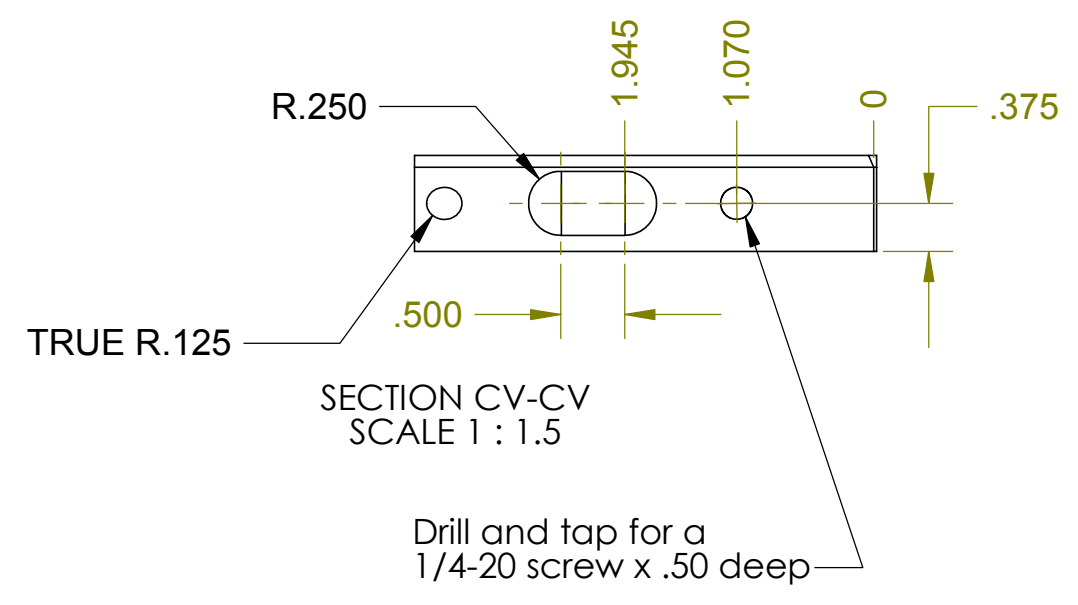
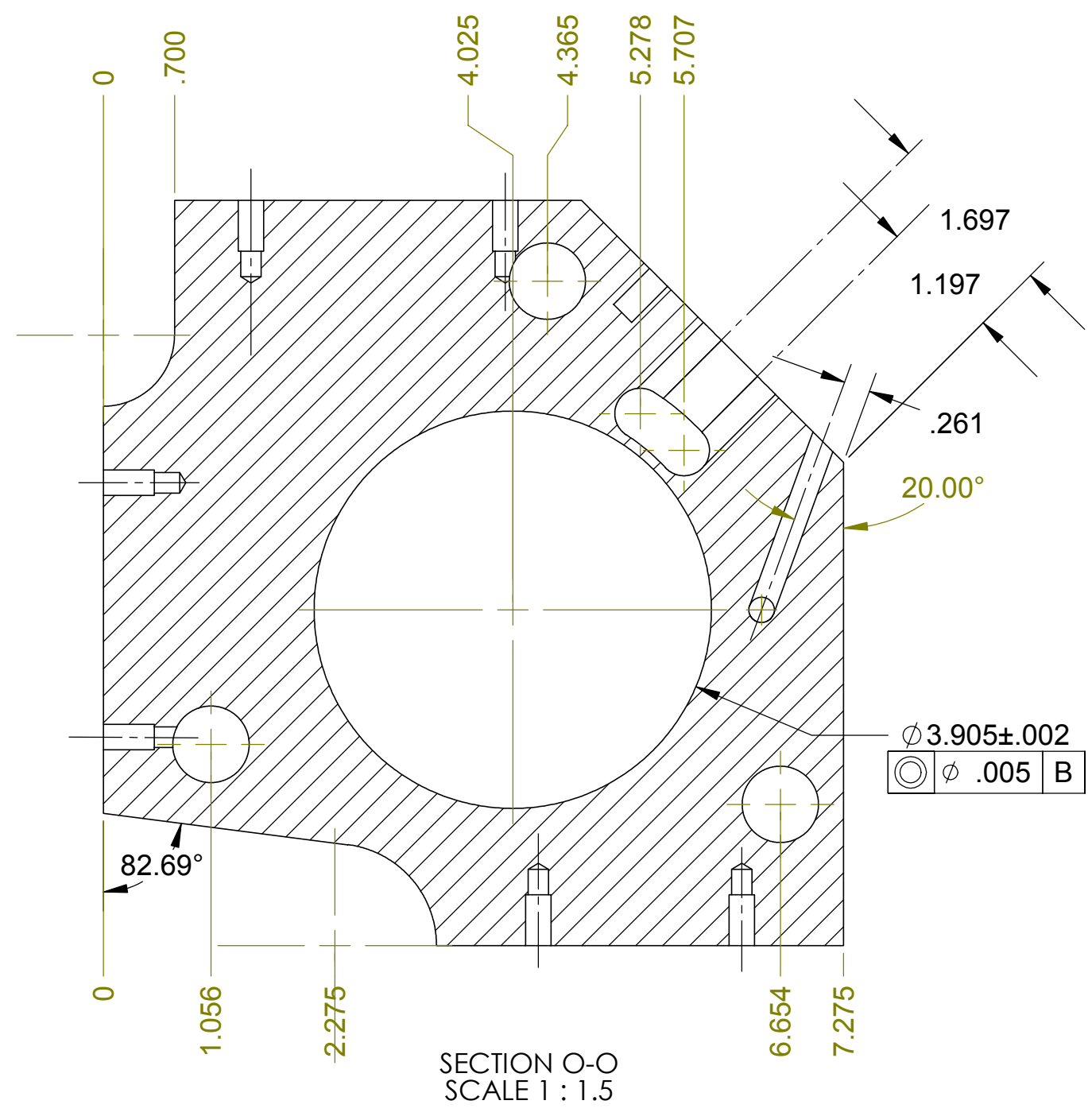
B	ϕ .005 (M)	A
	ϕ .002 (M)	




UNLESS OTHERWISE SPECIFIED: DIMENSIONS ARE IN INCHES		DATE	NAME	CALIFORNIA INSTITUTE OF TECHNOLOGY MASSACHUSETTS INSTITUTE OF TECHNOLOGY	
TOLERANCES: .XX ± 0.02"		DRAWN	4/02		Hardham
.XXX ± 0.001"		REDRAWN	Fall '02		Hammond
ANGULAR ± 30'		CHECKED	2/9/03	Kern	
MATERIAL	304 L	COMMENTS:		SYSTEM	
FINISH	32 RMS unless noted	1 Required for each actuator		LASTI	
				SUB-SYSTEM	
				HEPI	
				NEXT ASSY	
				PART NAME	
				BOTTOM FOUNDATION PLATE	
				SIZE DWG. NO.	
				D020292-A-E	
				REV	
				A	
				SCALE:	
				1:1 unless noted	

REV.	DATE	DCN #	DRAWING TREE #

2/9/2003 A



UNLESS OTHERWISE SPECIFIED:		DATE	NAME	 CALIFORNIA INSTITUTE OF TECHNOLOGY MASSACHUSETTS INSTITUTE OF TECHNOLOGY	
DIMENSIONS ARE IN INCHES		DRAWN	4/02		Hardham
TOLERANCES: .XX ± 0.020"		REDRAWN	Fall' 02		Hammond
.XXX ± 0.005"		CHECKED	2/9 03		Kern
ANGULAR ± 30'					
MATERIAL		COMMENTS:		SYSTEM LASTI	
FINISH 32 RMS unless noted				SUB-SYSTEM HEPI	
				NEXT ASSY	
				PART NAME Bottom Foundation Plate details	
				SIZE DWG. NO. C D020292-A-E-sht2	
				REV A	
				SCALE: 1:1 unless noted	
FILE NAME/LOCATION: 1					