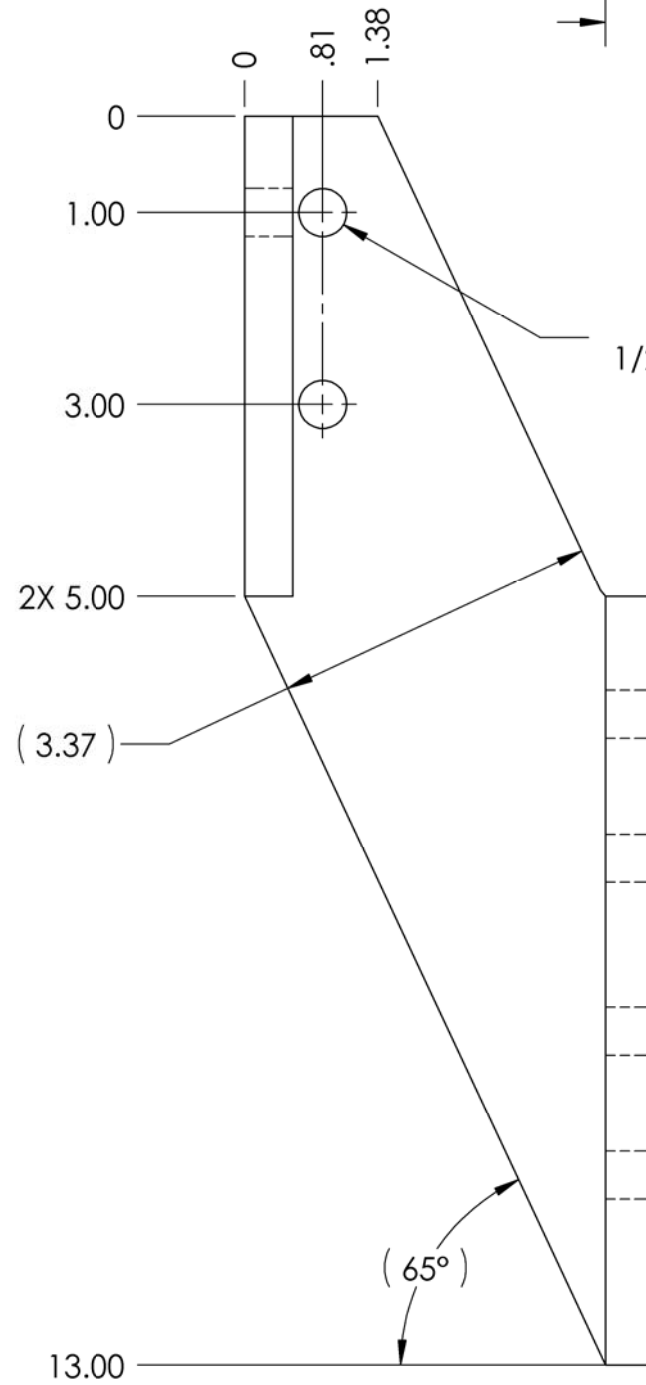
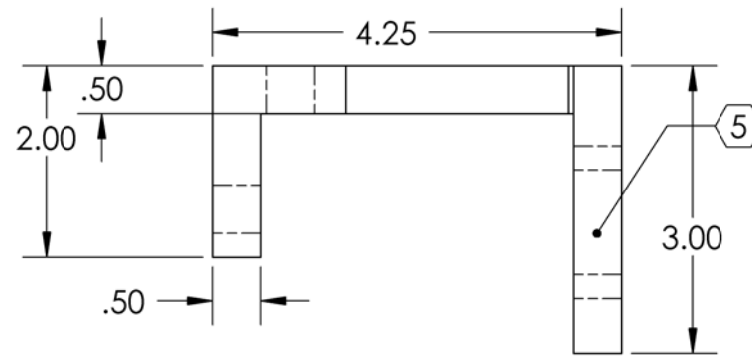
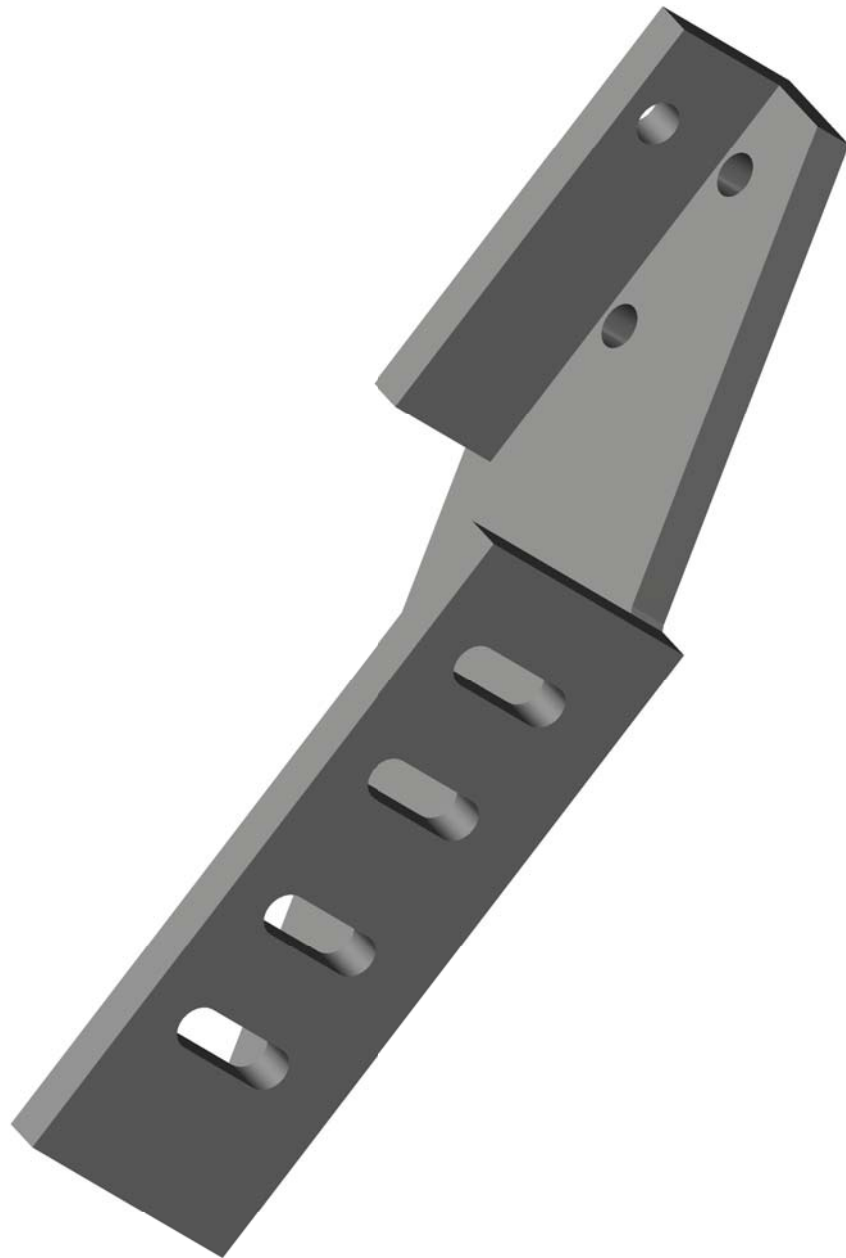


D020276-A, PART PDM REV: X-003, DRAWING PDM REV: X-000

REV.	DATE	DCN #	DRAWING TREE #
v1	18 Mar. 2011	E1100015	E1100016

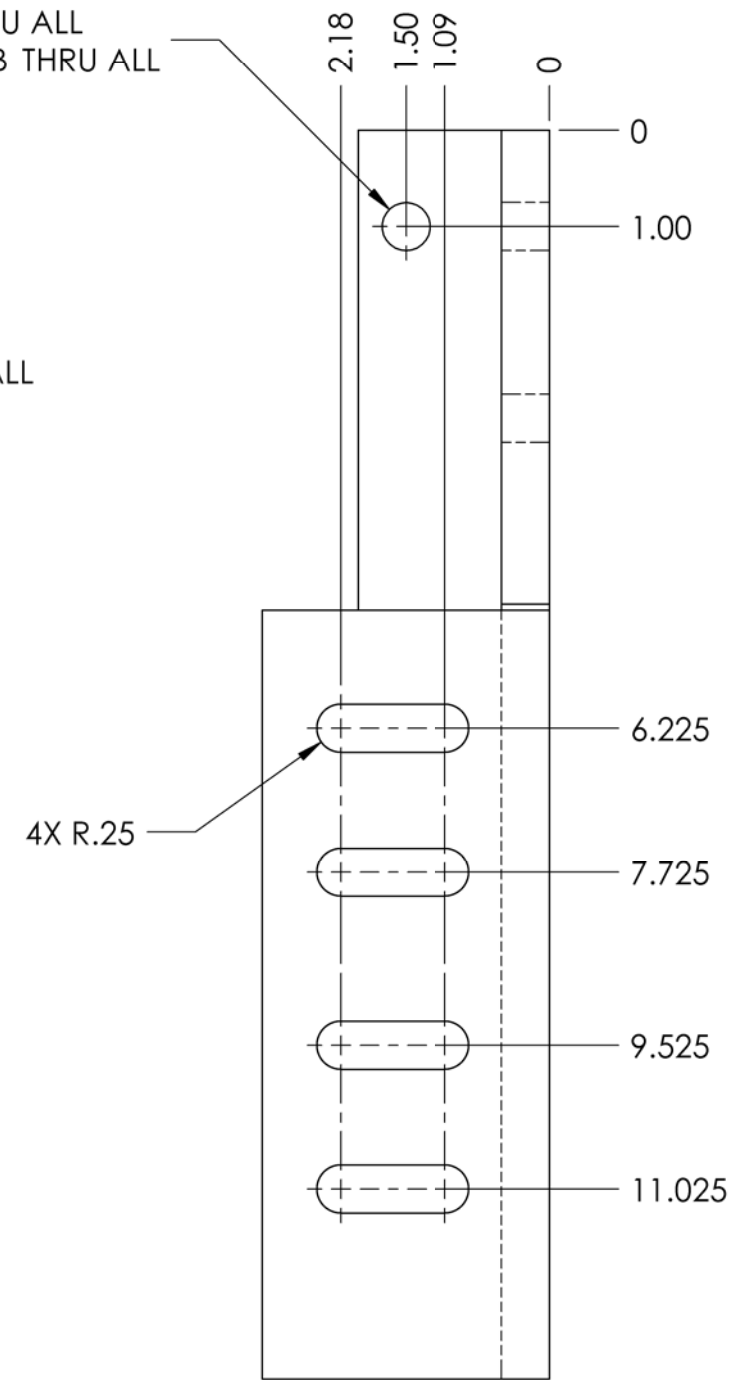
NOTES CONTINUED:

4. ALL MACHINING FLUIDS MUST BE FULLY SYNTHETIC, FULLY WATER SOLUBLE AND FREE OF SULFUR, SILICONE AND CHLORINE.
5. SCRIBE, ENGRAVE, OR MECHANICALLY STAMP (NO INKS OR DYES) DRAWING PART NUMBER, REVISION (AND VARIANT OR "TYPE" IF APPLICABLE ON NOTED SURFACE OF PART FOLLOWED ON THE NEXT LINE WITH A THREE DIGIT SERIAL NUMBER. SERIAL NUMBERS START AT 001 FOR THE FIRST ARTICLE AND PROCEED CONSECUTIVELY. USE MINIMUM 0.12 HIGH CHARACTERS, UNLESS THE SIZE OF THE PART DICTATES SMALLER CHARACTERS. A VIBRATORY TOOL MAY BE USED. EXAMPLE DXXXXXX-VY, TYPE-XX, S/N XXX.
6. APPROXIMATE WEIGHT = 7.92 LB.
7. ALL PARTS SHALL BE MANUFACTURED IN ACCORDANCE WITH LIGO SPECIFICATION E0900364.
8. PAINT: ALL VISIBLE SURFACES (exclude fastening hardware) EXCEPT AREAS IDENTIFIED BY M MEDIUM BLUE SHERWIN WILLIAMS (POLANE (R) T-PLUS POLYURETHANE ENAMEL) #SW-F63TX-L-2822-5864 PRIME WITH SHERWIN WILLIAMS INDUSTRIAL WASH PRIMER P60G2
9. "OXI SOLV RUST INHIBITOR" TO BE APPLIED PER MFG. INSTRUCTIONS TO ALL UNPAINTED SURFACES. BOTH TAPPED AND THRU HOLES WILL BE PLUGGED DURING APPLICATION.



Ø .45 THRU ALL
1/2-20 UNF - 2B THRU ALL

2X Ø .45 THRU ALL
1/2-20 UNF - 2B THRU ALL



NOTES AND TOLERANCES: (UNLESS OTHERWISE SPECIFIED)				LIGO CALIFORNIA INSTITUTE OF TECHNOLOGY MASSACHUSETTS INSTITUTE OF TECHNOLOGY		PART NAME					
DIMENSIONS ARE IN INCHES TOLERANCES: .XX ± .015 .XXX ± .005 ANGULAR ± .5°				1. INTERPRET DRAWING PER ASME Y14.5-1994. 2. REMOVE ALL SHARP EDGES, .03 x 45°. 3. DO NOT SCALE FROM DRAWING.		BRACE LEFT, PRE-ISOLATOR ASSEMBLY					
MATERIAL AISI 1018 Steel, Cold Rolled		FINISH 63 μinch		SYSTEM ADVANCED LIGO		SUB-SYSTEM SEI		DESIGNER K.MASON		DATE 20 May. 2002	
NEXT ASSY D030322				CHECKER K.MASON		DATE 18 Mar. 2011		SIZE B		DWG. NO. D020276	
APPROVAL K.MASON				DATE 18 Mar. 2011		SCALE 1:2		PROJECTION 		REV. v1	
SHEET 1 OF 1											