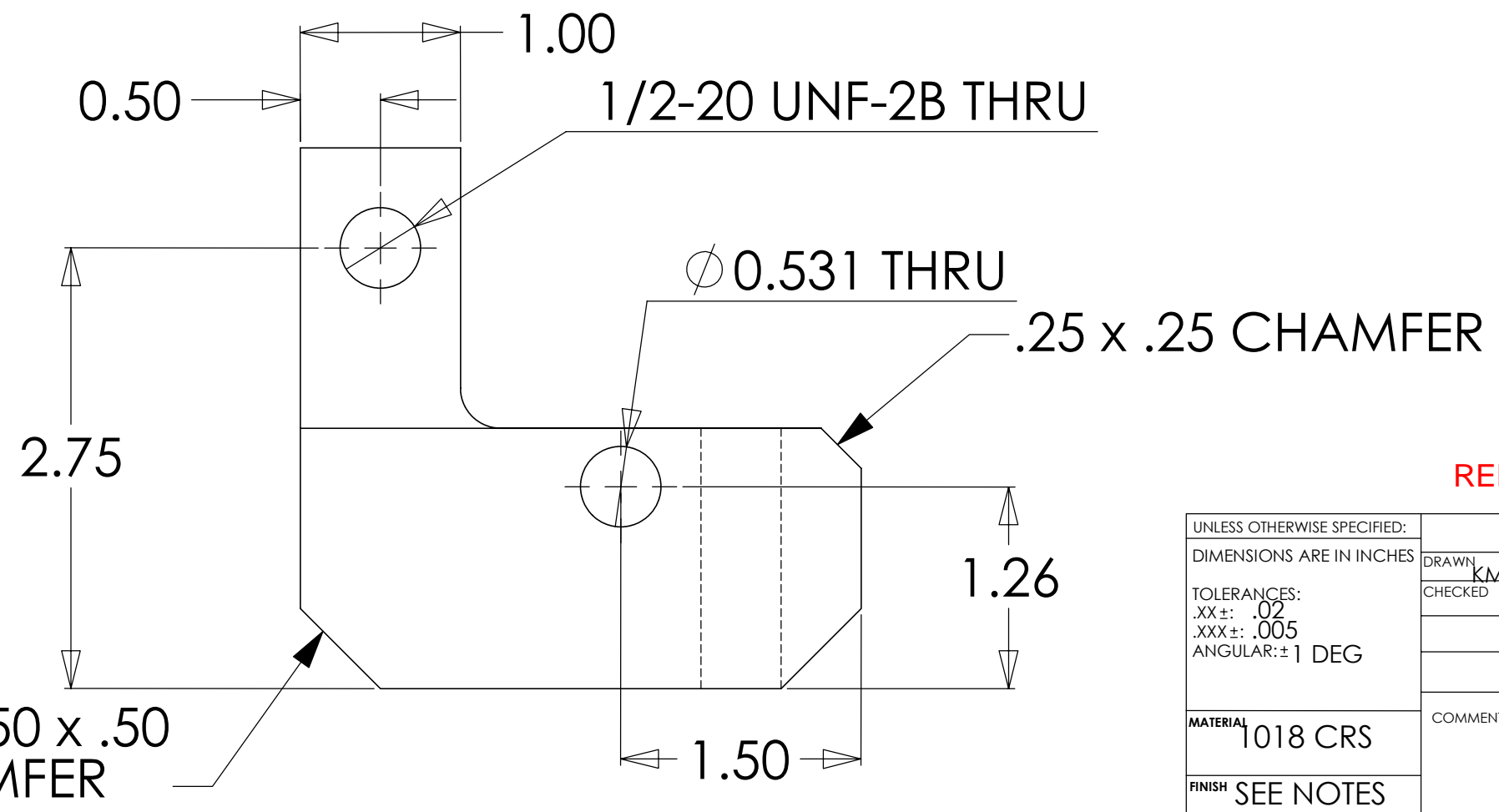
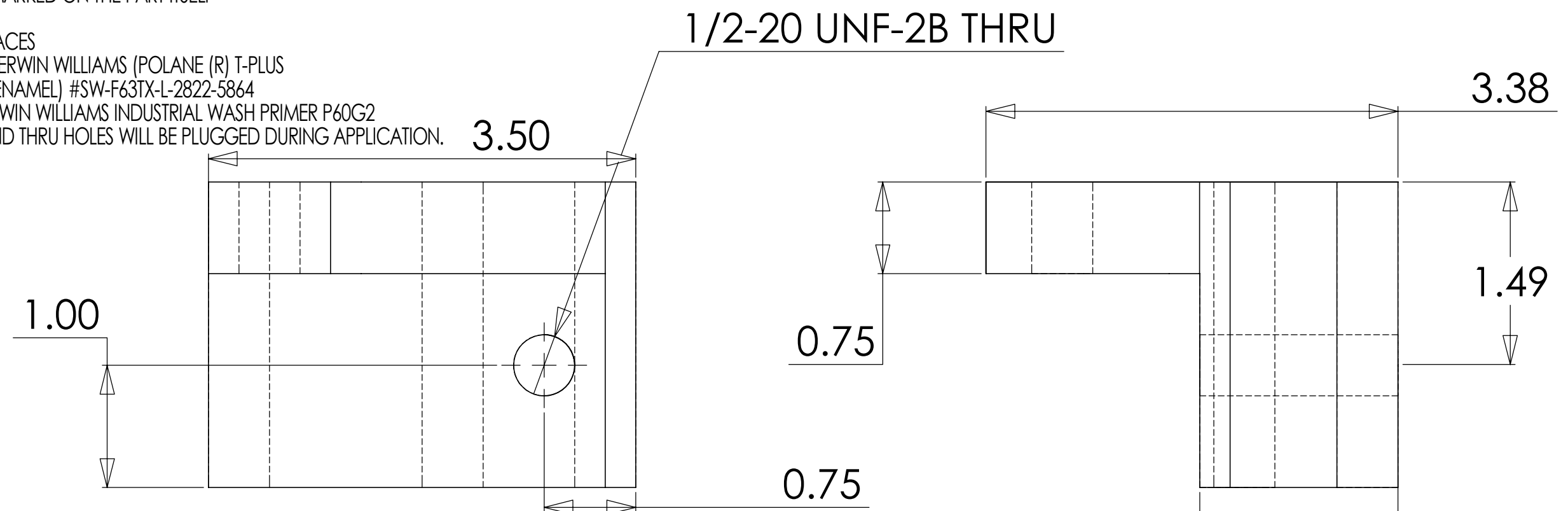


NOTES: UNLESS OTHERWISE SPECIFIED

1. REMOVE ALL BURRS AND BREAK SHARP EDGES TO A MAXIMUM OF .015
2. PART NUMBER (DRAWING NO., DASH NO., REVISION NO.) TO BE CLEARLY MARKED ON THE PART ITSELF
3. PAINT:
ALL VISIBLE SURFACES
MEDIUM BLUE SHERWIN WILLIAMS (POLANE (R) T-PLUS POLYURETHANE ENAMEL) #SW-F63TX-L-2822-5864
PRIME WITH SHERWIN WILLIAMS INDUSTRIAL WASH PRIMER P60G2
4. BOTH TAPPED AND THRU HOLES WILL BE PLUGGED DURING APPLICATION.

REV.	DATE	DCN #	DRAWING TREE #
A	02/24/03	E030103-00	
B	8/25/03	E030442-00-E	



RELEASE FOR PRODUCTION, DCN No. E030442, 10.30.03

UNLESS OTHERWISE SPECIFIED: DIMENSIONS ARE IN INCHES		DATE	NAME	CALIFORNIA INSTITUTE OF TECHNOLOGY MASSACHUSETTS INSTITUTE OF TECHNOLOGY
TOLERANCES: .XX±: .02 .XXX±: .005 ANGULAR: ±1 DEG		5/29/02		
MATERIAL	1018 CRS	COMMENTS:		SYSTEM
FINISH	SEE NOTES			SUB-SYSTEM
				NEXT ASSY
				PART NAME
				PRE-ISOLATOR ASSEMBLY
				SIZE
				DWG. NO.
				REV
				D020270-B-D
				B
SCALE: 1:1		D020270_EPI_offset_clamp		SHEET 1 OF 1