

NOTES: UNLESS OTHERWISE SPECIFIED

1. REMOVE ALL BURRS AND BREAK SHARP EDGES TO A MAXIMUM OF .015
2. PART NUMBER (DRAWING NO., DASH NO., REVISION NO.) TO BE CLEARLY MARKED ON THE PART ITSELF
3. PAINT:  
ALL VISIBLE SURFACES  
MEDIUM BLUE SHERWIN WILLIAMS (POLANE (R) T-PLUS POLYURETHANE ENAMEL) #SW-F63TX-L-2822-5864  
PRIME WITH SHERWIN WILLIAMS INDUSTRIAL WASH PRIMER P60G2
4. BOTH TAPPED AND THRU HOLES WILL BE PLUGGED DURING APPLICATION.

REV.	DATE	DCN #	DRAWING TREE #
A	02/24/03	E030103-00	

D

D

C

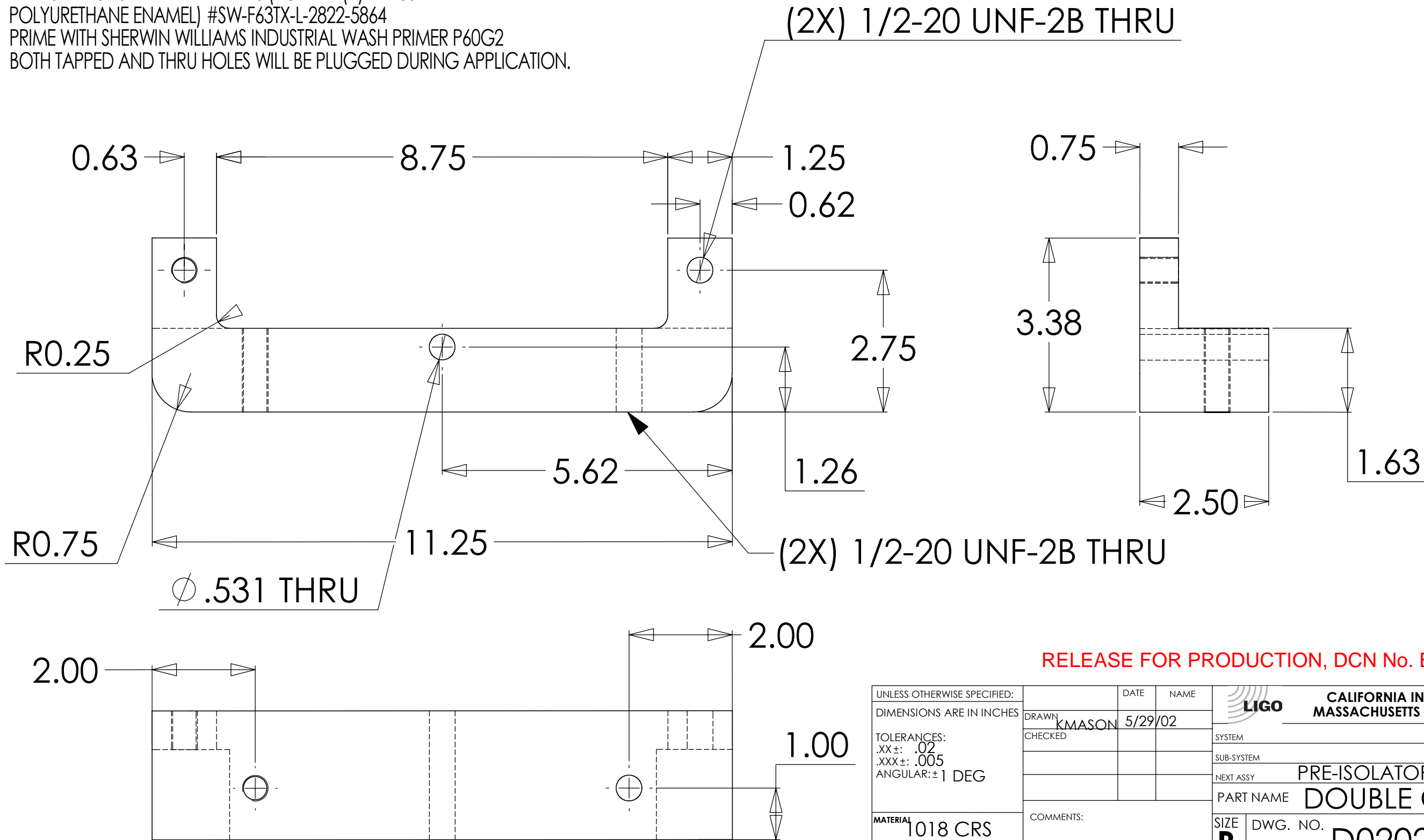
C

B


B

A

A



RELEASE FOR PRODUCTION, DCN No. E030103, 10.30.03

UNLESS OTHERWISE SPECIFIED: DIMENSIONS ARE IN INCHES		DATE	NAME	 <b>CALIFORNIA INSTITUTE OF TECHNOLOGY MASSACHUSETTS INSTITUTE OF TECHNOLOGY</b>
TOLERANCES: .XX±: .02 .XXX±: .005 ANGULAR: ±1 DEG		DRAWN KMASON	5/29/02	
MATERIAL 1018 CRS		CHECKED		SUB-SYSTEM
FINISH SEE NOTES		COMMENTS:		NEXT ASSY PRE-ISOLATOR ASSEMBLY
				PART NAME DOUBLE CLAMP
				SIZE <b>B</b>
				DWG. NO. D020269-A-D
				REV <b>A</b>
				SCALE: 1:1
				D020269-A.SLDPR
				SHEET 1 OF 1