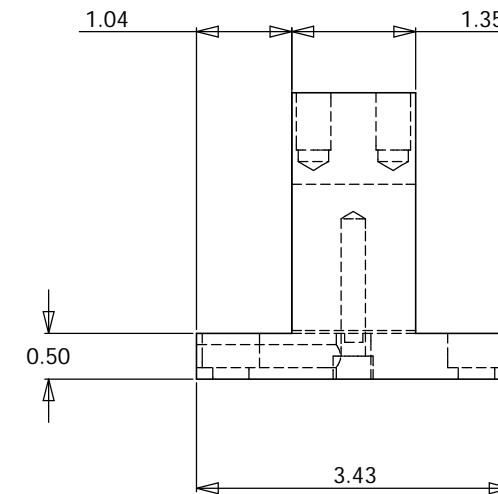
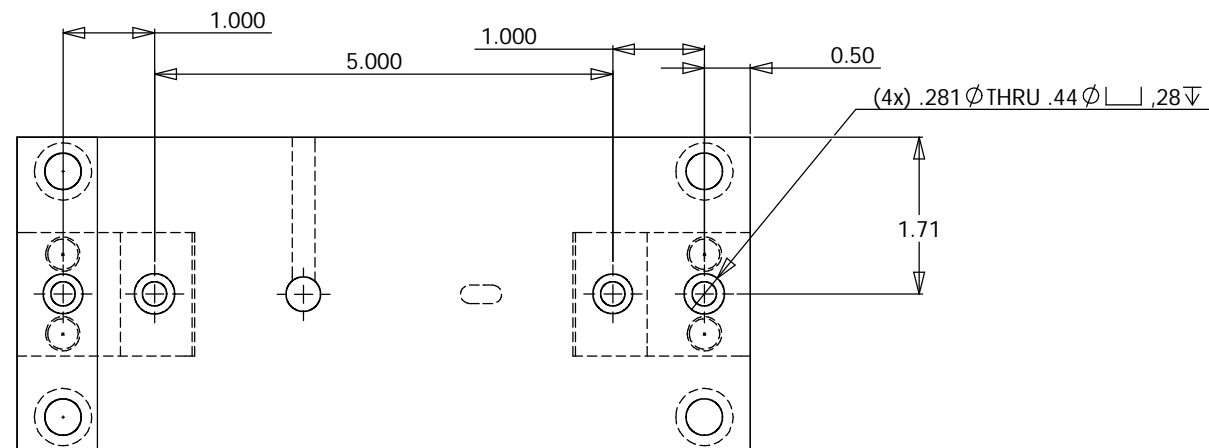
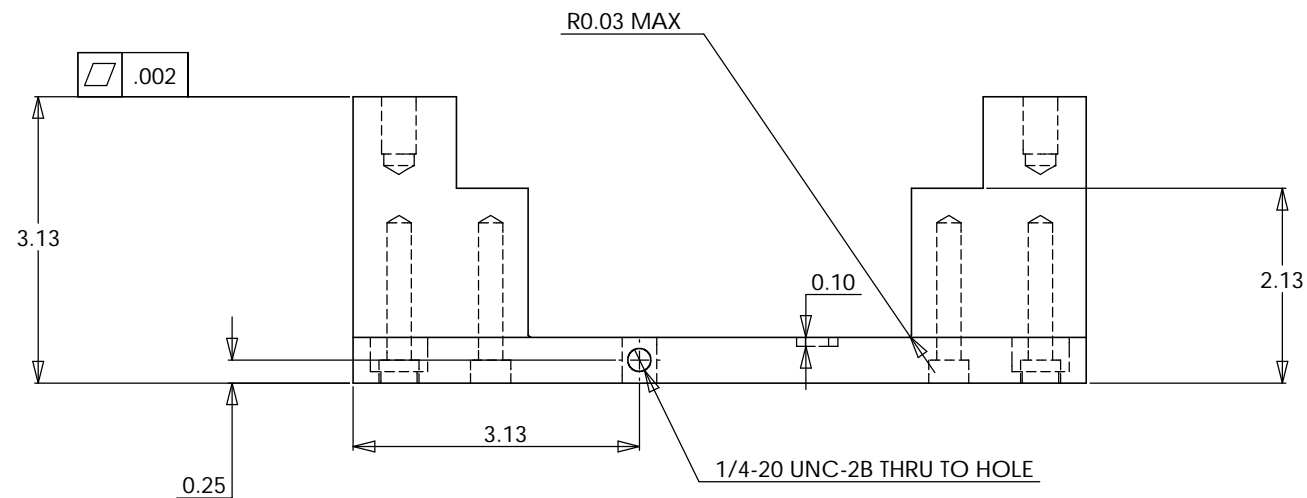
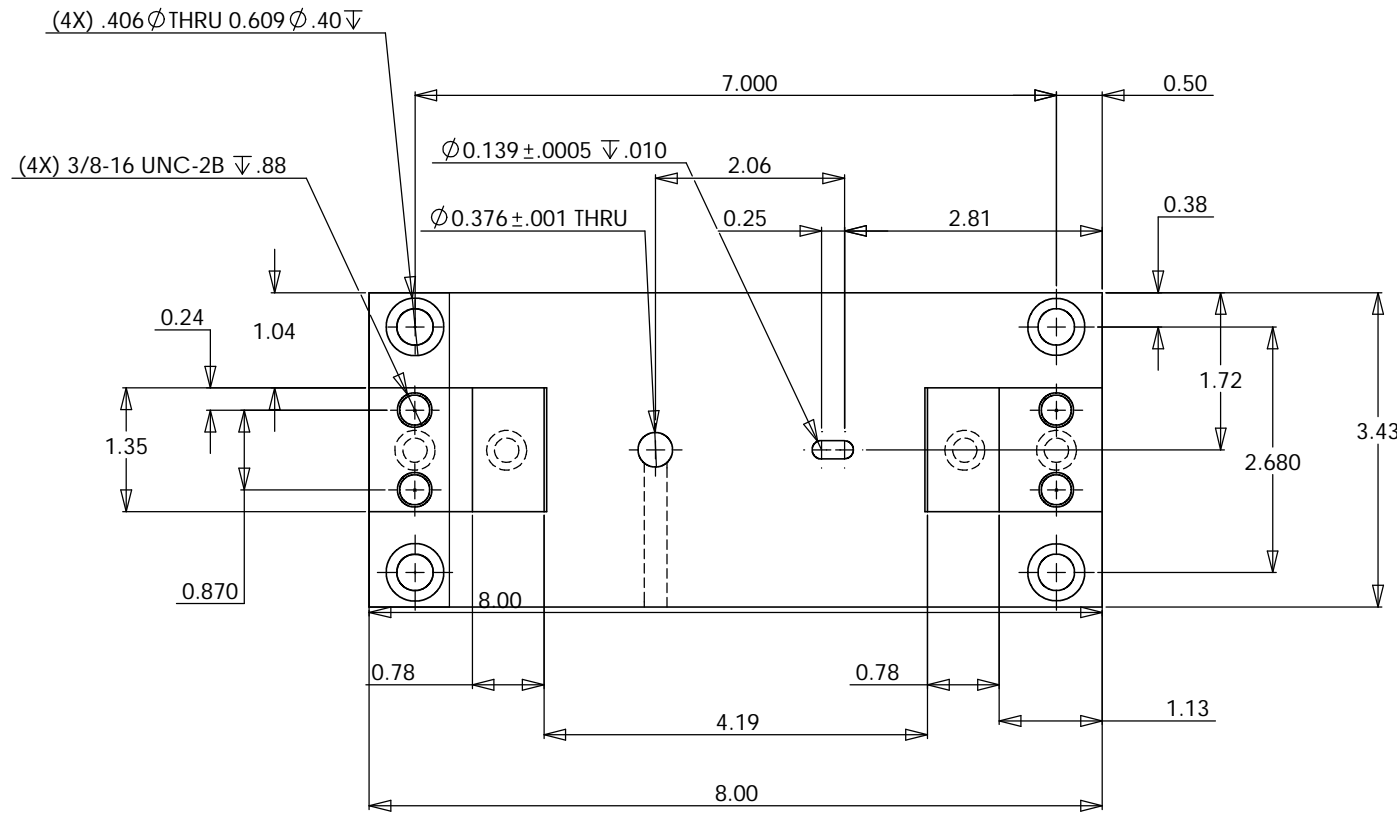


NOTES: (UNLESS OTHERWISE SPECIFIED)

NOTES: UNLESS OTHERWISE SPECIFIED  
 1. REMOVE ALL BURRS AND BREAK SHARP EDGES TO A MAXIMUM OF .015  
 2. PART NUMBER (DRAWING NO., DASH NO., REVISION NO., SERIAL NO.)  
 TO BE CLEARLY MARKED ON THE PART ITSELF

REV	DATE	DCN #	DRAWING TREE #



ITEM NO.	REQ. QUANTITY	SPARE	TOT. QUANTITY	PART NUMBER	DESCRIPTION	SUPPLIER
<b>PARTS LIST</b>						
UNLESS OTHERWISE SPECIFIED:				DATE	NAME	
DIMENSIONS ARE IN INCHES				5/20/02	KIMASON	
TOLERANCES:				CALIFORNIA INSTITUTE OF TECHNOLOGY		
XX ± .02				MASSACHUSETTS INSTITUTE OF TECHNOLOGY		
XXX ± .005				SYSTEM		
ANGULAR ± 1				NEXT ASSY		
MATERIAL: 303 SS				PART NAME		
FINISH: NONE				EM ACTUATOR ASSEMBLY		
COMMENTS:				PART NAME		
SCALE: D				PUSH BAR		
DWG. NO. D020256-A				REV A		
SHEET 1 OF 1				FILE NAME/LOCATION:		