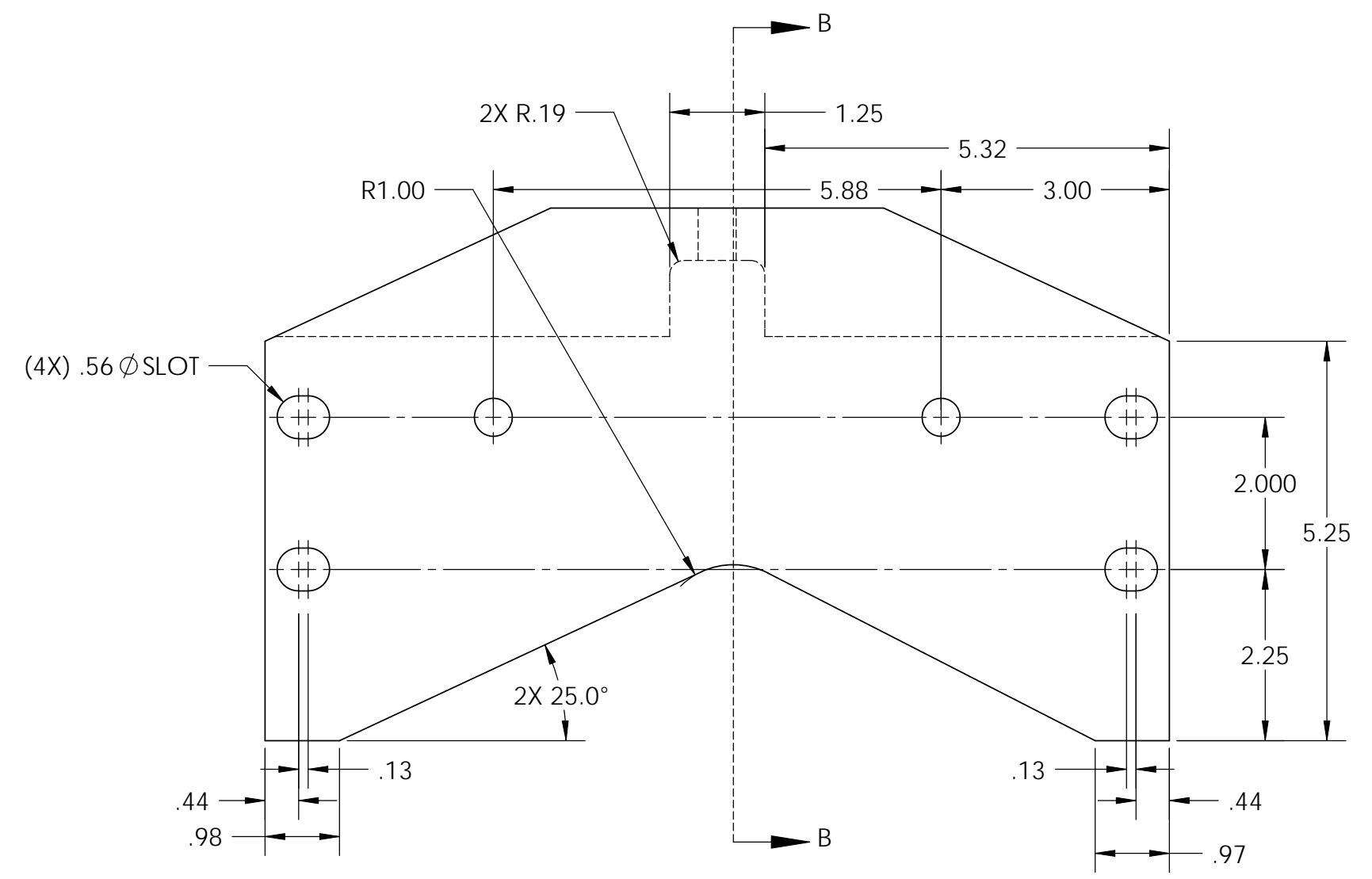
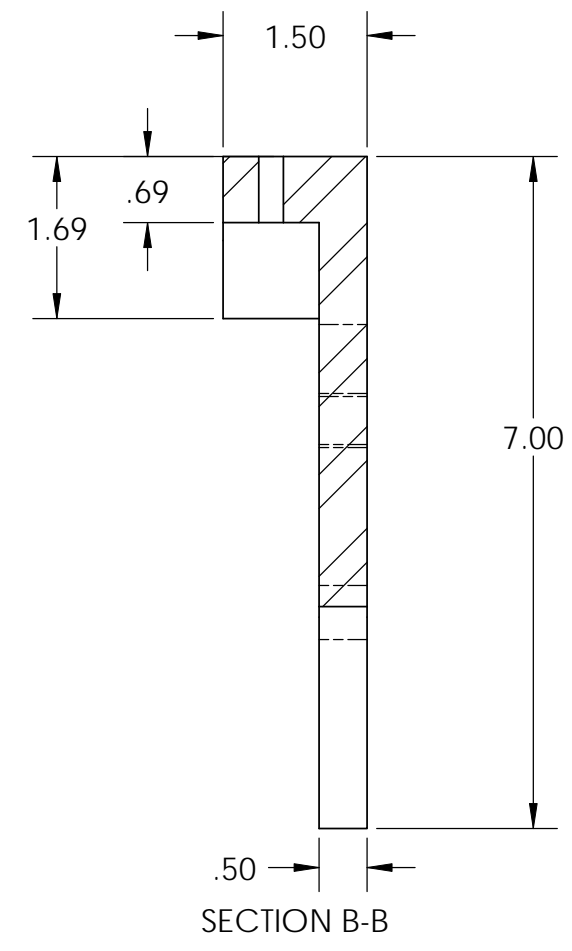
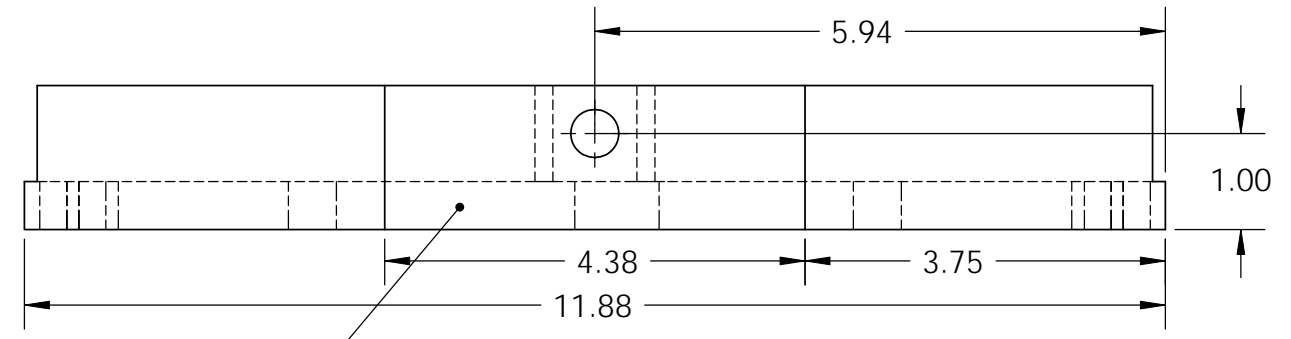


REV.	DATE	DCN #	DRAWING TREE #
v1	18 Mar. 2011	E1100015	E1100016

- NOTES CONTINUED:
- ALL MACHINING FLUIDS MUST BE FULLY SYNTHETIC, FULLY WATER SOLUBLE AND FREE OF SULFUR, SILICONE AND CHLORINE.
 - SCRIBE, ENGRAVE, OR MECHANICALLY STAMP (NO INKS OR DYES) DRAWING PART NUMBER, REVISION (AND VARIANT OR "TYPE" IF APPLICABLE) ON NOTED SURFACE OF PART FOLLOWED ON THE NEXT LINE WITH A THREE DIGIT SERIAL NUMBER. SERIAL NUMBERS START AT 001 FOR THE FIRST ARTICLE AND PROCEED CONSECUTIVELY. USE MINIMUM 0.12 HIGH CHARACTERS, UNLESS THE SIZE OF THE PART DICTATES SMALLER CHARACTERS. A VIBRATORY TOOL MAY BE USED. EXAMPLE DXXXXXX-VY, TYPE-XX, S/N XXX.
 - APPROXIMATE WEIGHT = 12.39837417 LB.
 - ALL PARTS SHALL BE MANUFACTURED IN ACCORDANCE WITH LIGO SPECIFICATION E0900364.
 - PAINT: ALL VISIBLE SURFACES (exclude fastening hardware) EXCEPT AREAS IDENTIFIED BY **M**
MEDIUM BLUE SHERWIN WILLIAMS (POLANE (R) T-PLUS POLYURETHANE ENAMEL) #SW-F63TX-L-2822-5864
PRIME WITH SHERWIN WILLIAMS INDUSTRIAL WASH PRIMER P60G2
 - "OXI SOLV RUST INHIBITOR" TO BE APPLIED PER MFG. INSTRUCTIONS TO ALL UNPAINTED SURFACES.
BOTH TAPPED AND THRU HOLES WILL BE PLUGGED DURING APPLICATION.



D020250-A, PART PDM REV: X-004, DRAWING PDM REV: X-000

NOTES AND TOLERANCES: (UNLESS OTHERWISE SPECIFIED)				LIGO CALIFORNIA INSTITUTE OF TECHNOLOGY MASSACHUSETTS INSTITUTE OF TECHNOLOGY		PART NAME				
DIMENSIONS ARE IN INCHES TOLERANCES: .XX ± .015 .XXX ± .005 ANGULAR ± .5°				1. INTERPRET DRAWING PER ASME Y14.5-1994. 2. REMOVE ALL SHARP EDGES, .03 x 45°. 3. DO NOT SCALE FROM DRAWING.		FRONT PLATE, PRE-ISOLATOR ASSEMBLY				
						SYSTEM ADVANCED LIGO	SUB-SYSTEM SEI	DESIGNER K.MASON 16 May 2002	SIZE B	DWG. NO. D020250
MATERIAL AISI 1018 Steel, Cold Rolled		FINISH 63 μinch	NEXT ASSY D030366		CHECKER K.MASON 16 May 2002	APPROVAL K.MASON 18 Mar. 2011	SCALE: 1:2	PROJECTION:	SHEET 1 OF 1	