

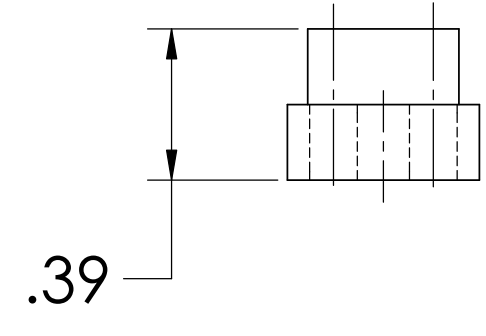
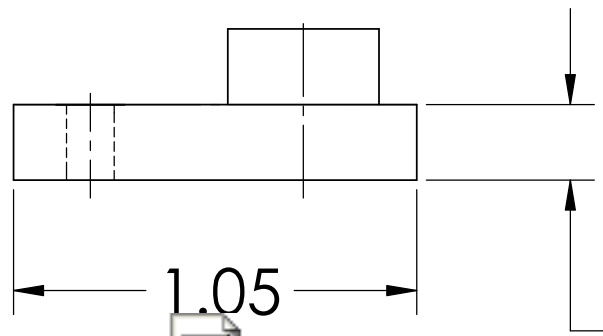
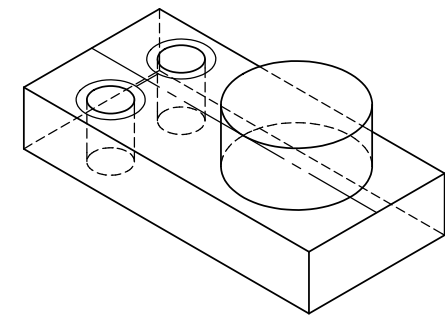
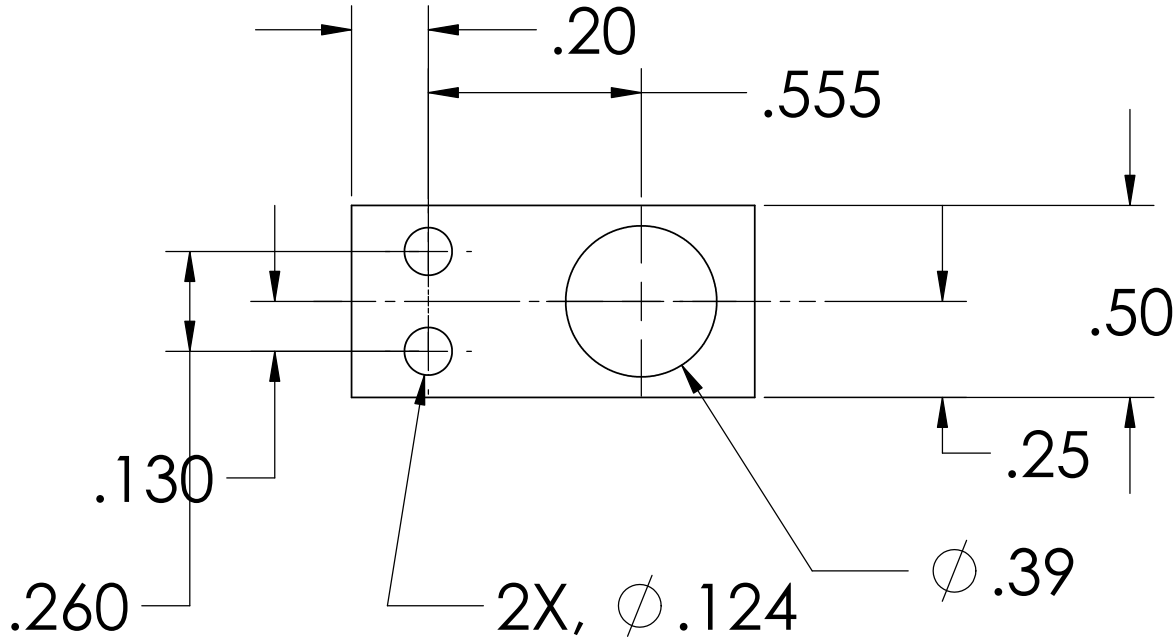
NOTES: (UNLESS OTHERWISE SPECIFIED)

1. DIMENSIONS IN INCHES


2. REMOVE ALL SHARP EDGES, R.02 MIN

3. ALL MACHINING FLUIDS SHALL BE WATER SOLUBLE AND FREE OF SULFUR, CHLORINE AND SILICONE, SUCH AS CINCINNATI MILACRON'S CIMTECH 410 (STAINLESS STEEL)

REV.	DATE	DCN #	DRAWING TREE #
A	June 25th 2004	E040303-00	



D020210\_BridgeSpacer\_forMagnets.step

DIMENSIONS ARE IN INCHES		NAME	DATE	 <b>CALIFORNIA INSTITUTE OF TECHNOLOGY MASSACHUSETTS INSTITUTE OF TECHNOLOGY</b>
TOLERANCES: .XX ±0.01 .XXX ±0.005 ANGULAR ±1°		CIT	03/02	
MATERIAL	6061-T6-Al	CHECKED		SYSTEM <b>ADVANCED LIGO</b>
FINISH				SUB-SYSTEM <b>SUS, MODE CLEANER</b>
		COMMENTS:		NEXT ASSY <b>UPPER MASS</b>
				PART NAME <b>BRIDGE SPACER FOR MAGNET</b>
		SIZE	DWG. NO.	REV.
		<b>A</b>	D020210	<b>A</b>
		SCALE: NTS		SHEET 1 OF 1