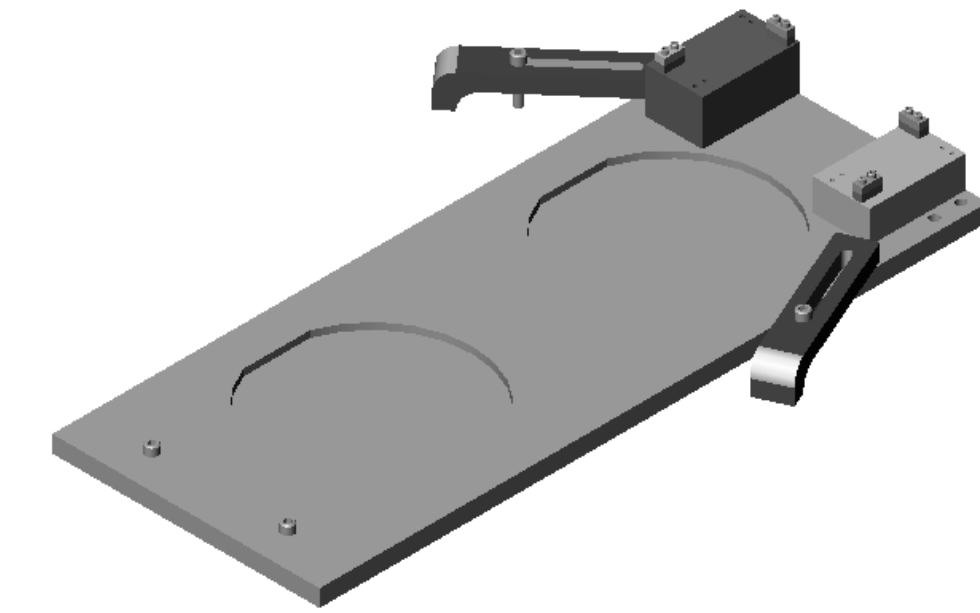
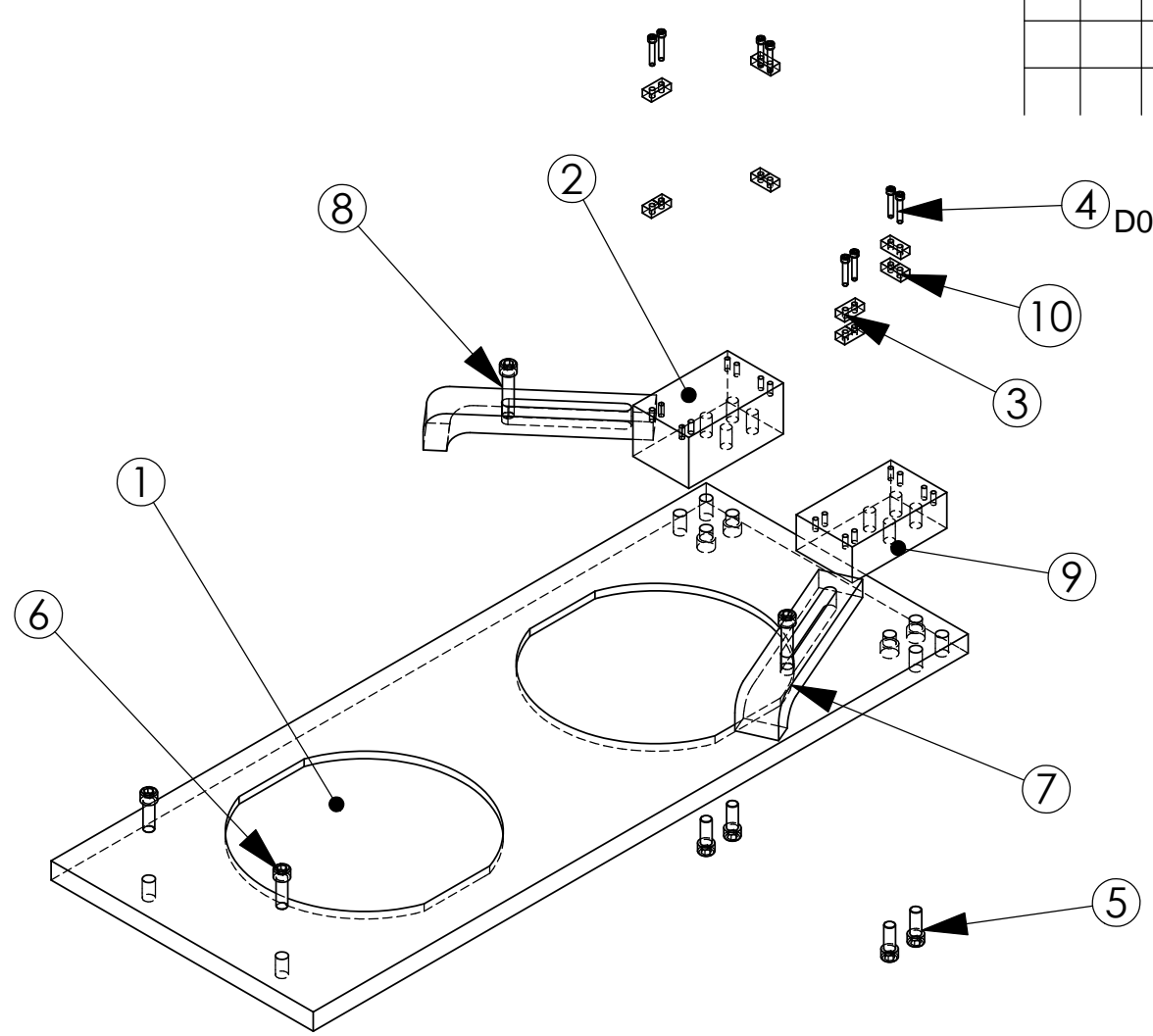
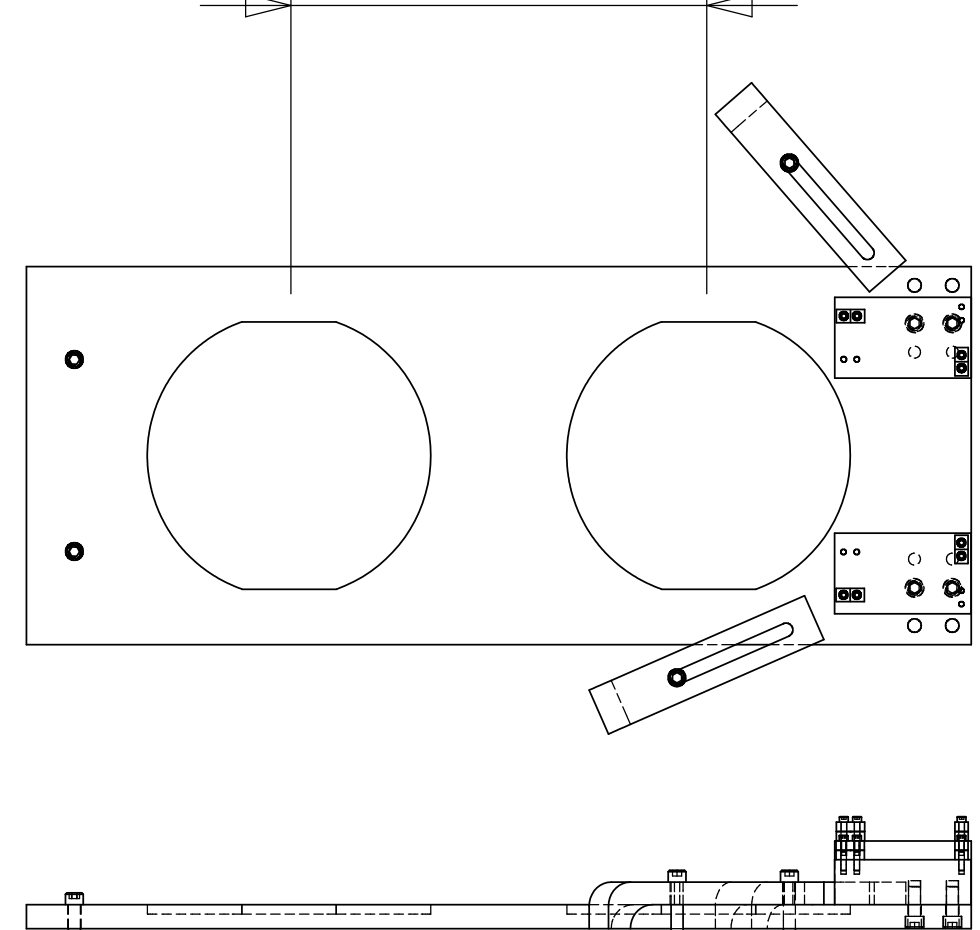


REV.	DATE	DCN #	DRAWING TREE #
A	24 JUNE 2004	E040303-00	



D020162_ASSEMBLY_LOWER WIRE JIG.step

LOWER WIRE
LENGTH = 220mm



ITEM NO	REQ.	SPARE	TOT.	PART NUMBER	DESCRIPTION	MATERIAL
10	4	4	8	D030047	CLAMP MASS JIG (WITH GROOVE)	6061-T6-AI
9	1	1	2	D030048	SPACER FOR MASS JIG (LOWER WIRE)	6061-T6-AI
8	2	2	4		SST SOCKET HEAD CAP SCREW 0.25-20 UNC-3A X 1.125 LONG	300 SSTL
7	2	2	4	D980184	LOS CLAMP LONG	300 SSTL
6	2	2	4		SST SOCKET HEAD CAP SCREW 0.25-20 UNC-3A X 0.75 LONG	300 SSTL
5	4	4	8		SST SOCKET HEAD CAP SCREW 0.25-20 UNC-3A X 0.625 LONG	300 SSTL
4	8	8	16		SST SOCKET HEAD CAP SCREW #4-40 UNC-3A X 0.625 LONG	300 SSTL
3	4	4	8	D020156	CLAMP MASS JIG	6061-T6-AI
2	1	1	2	D020155	SPACER FOR MASS JIG	6061-T6-AI
1	1	1	2	D020157	TEST MASS JIG	6061-T6-AI

PARTS LIST

NOTES: (UNLESS OTHERWISE SPECIFIED)
 1. WIRE IS 6 THOU DIAMETER MUSIC WIRE
 2. SUSPENDED MASSES USED FOR WIRE JIG ARE 1.5kg EACH
 3. AS SHOWN, ONLY UPPER SET OF INTERMEDIATE WIRE CLAMPS ARE ATTACHED DURING LOWER WIRE ASSEMBLY. THE OTHER SET OF 2 SHOULD BE ATTACHED PRIOR TO INSTALLATION ON THE CATCHER, D020458.

NAME	DATE	CALIFORNIA INSTITUTE OF TECHNOLOGY MASSACHUSETTS INSTITUTE OF TECHNOLOGY
DRAWN	CIT	
CHECKED		
DIMENSIONS ARE IN INCHES TOLERANCES: .XX ±-- .XXX ±-- ANGULAR ± -- °		SYSTEM ADVANCED LIGO SUB-SYSTEM SUS NEXT ASSY MC: WIRE JIG ASSEMBLY PART NAME LOWER WIRE JIG
SIZE	DWG. NO.	REV.
B	D020162	A
SCALE: NTS	PROJECTION:	SHEET 1 OF 1