

NOTES: (UNLESS OTHERWISE SPECIFIED)

1. DIMENSIONS IN INCHES

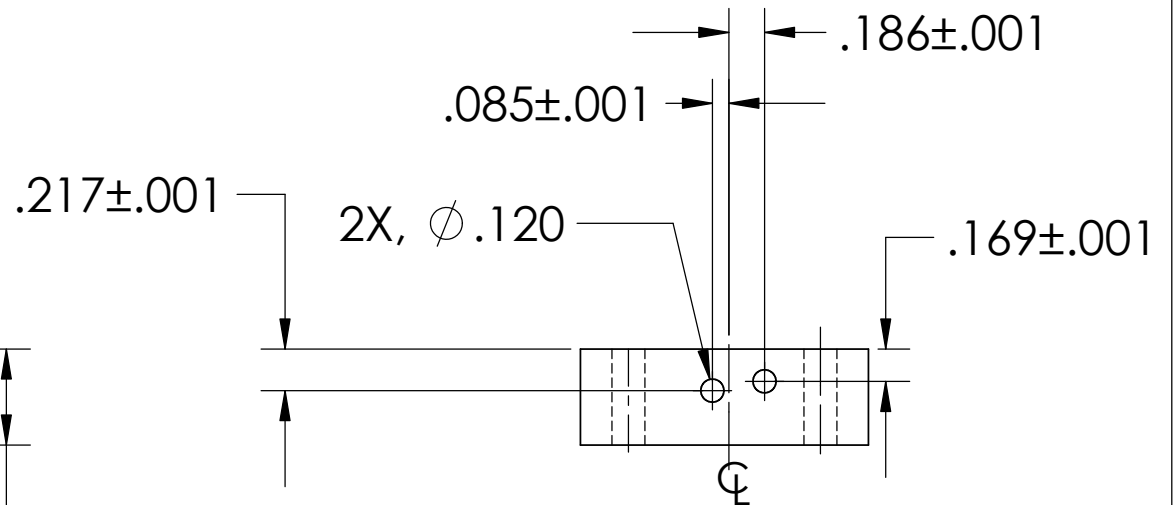
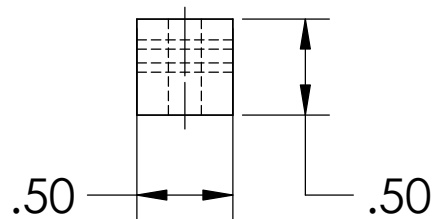
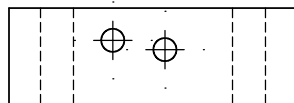
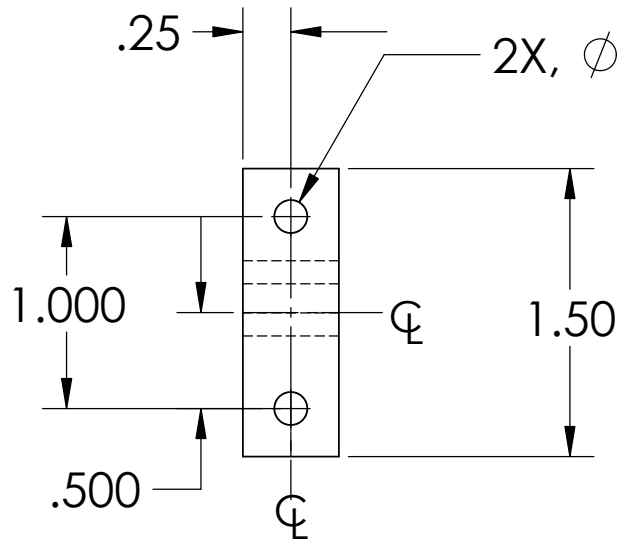
2. REMOVE ALL SHARP EDGES, R.02 MIN

3. ALL MACHINING FLUIDS SHALL BE WATER SOLUBLE AND FREE OF SULFUR, CHLORINE AND SILICONE, SUCH AS CINCINNATI MILACRON'S CIMTECH 410 (STAINLESS STEEL)

REV.	DATE	DCN #	DRAWING TREE #
A	24 JUNE 2004	E040303-00	



D020158_ANGLEDATTACH_UPPERBLADEWIRECLAMP.step



DIMENSIONS ARE IN INCHES		NAME	DATE	CALIFORNIA INSTITUTE OF TECHNOLOGY MASSACHUSETTS INSTITUTE OF TECHNOLOGY
TOLERANCES: .XX ±0.01 .XXX ±0.005 ANGULAR ±0.5°		DRAWN CIT		
MATERIAL 6061-T6-AL		CHECKED		SYSTEM ADVANCED LIGO
FINISH				SUB-SYSTEM SUS
		COMMENTS:		NEXT ASSY MC: WIRE JIG
				PART NAME ANGLED ATTACHMENT UPPER BLADE CLAMP PIECE
		SIZE A	DWG. NO. D020158	REV. A
		SCALE: NTS		SHEET 1 OF 1