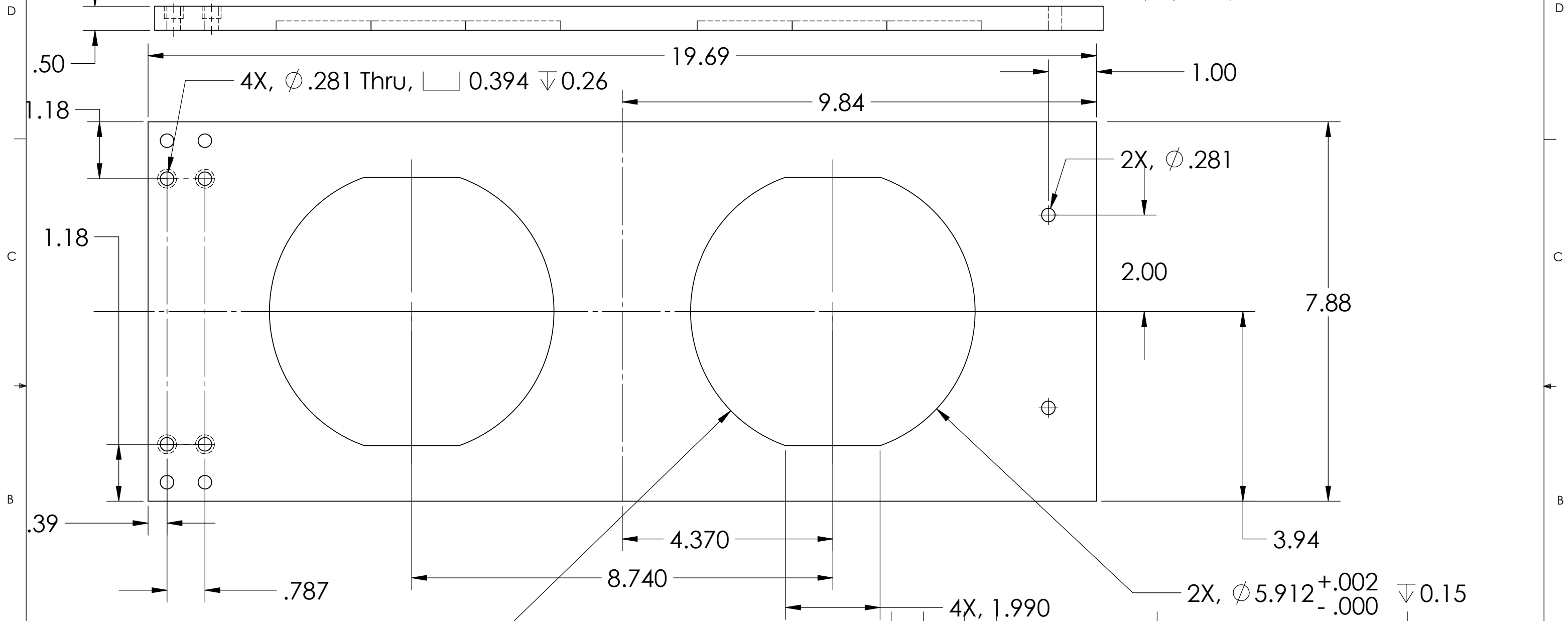


NOTES: (UNLESS OTHERWISE SPECIFIED)
 1. DIMENSIONS IN INCHES
 2. REMOVE ALL SHARP EDGES, R.02 MIN
 3. ALL MACHINING FLUIDS SHALL BE WATER SOLUBLE AND FREE OF SULFUR, CHLORINE AND SILICONE, SUCH AS CINCINNATI MILACRON'S CIMTECH 410 (STAINLESS STEEL)

REV.	DATE	DCN
A	24 JUNE 2004	E040303-00




FOR FIT WITH D020234



D020157_testmass_jig.step

ITEM NO.	REQ.	SPARE	TOT.	PART NUMBER	DESCRIPTION	SUPPLIER

UNLESS OTHERWISE SPECIFIED:		DATE	NAME	PARTS LIST	
DIMENSIONS ARE IN INCHES		03/02	CIT	 CALIFORNIA INSTITUTE OF TECHNOLOGY MASSACHUSETTS INSTITUTE OF TECHNOLOGY	
TOLERANCES:				SYSTEM: ADVANCED LIGO	
.XX ±:0.01				SUB-SYSTEM: SUS	
.XXX ±:0.005				NEXT ASSY: MC: WIRE JIGS	
ANGULAR: ±°				PART NAME: TESTMASS_JIG	
MATERIAL: 6061-T6-AL		COMMENTS:		SIZE: B	DWG. NO.: D020157
FINISH:				SCALE: NTS	REV: A
				SHEET 1 OF 1	