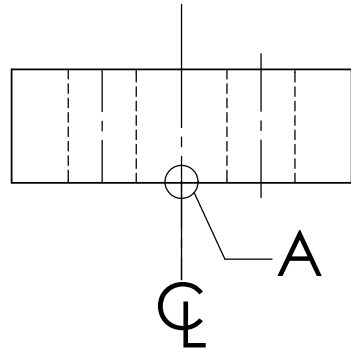


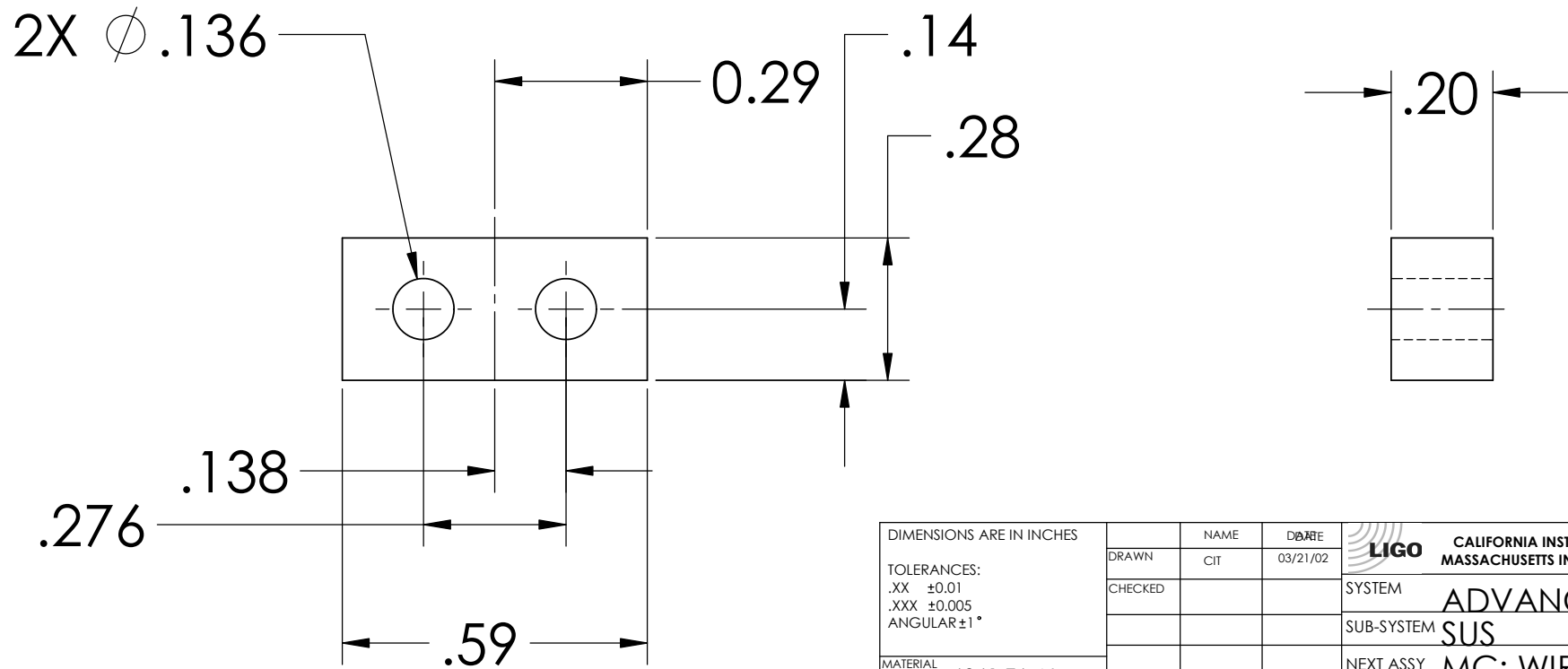
NOTES: (UNLESS OTHERWISE SPECIFIED)


1. DIMENSIONS IN INCHES
2. REMOVE ALL SHARP EDGES, R.02 MIN
3. ALL MACHINING FLUIDS SHALL BE WATER SOLUBLE AND FREE OF SULFUR, CHLORINE AND SILICONE, SUCH AS CINCINNATI MILACRON'S CIMTECH 410 (STAINLESS STEEL)

REV.	DATE	DCN
A	24 JUNE 2004	E040303-00



D020156_clamp_Massjig.step



DIMENSIONS ARE IN INCHES		NAME	DATE	 CALIFORNIA INSTITUTE OF TECHNOLOGY MASSACHUSETTS INSTITUTE OF TECHNOLOGY
TOLERANCES: .XX ±0.01 .XXX ±0.005 ANGULAR ±1°		CIT	03/21/02	
MATERIAL 6061-T6-AL		DRAWN		SYSTEM ADVANCED LIGO
FINISH		CHECKED		SUB-SYSTEM SUS
		COMMENTS:		NEXT ASSY MC: WIRE JIG
				PART NAME CLAMP MASS JIG
		SIZE A	DWG. NO. D020156	REV. A
		SCALE:		SHEET 1 OF 1