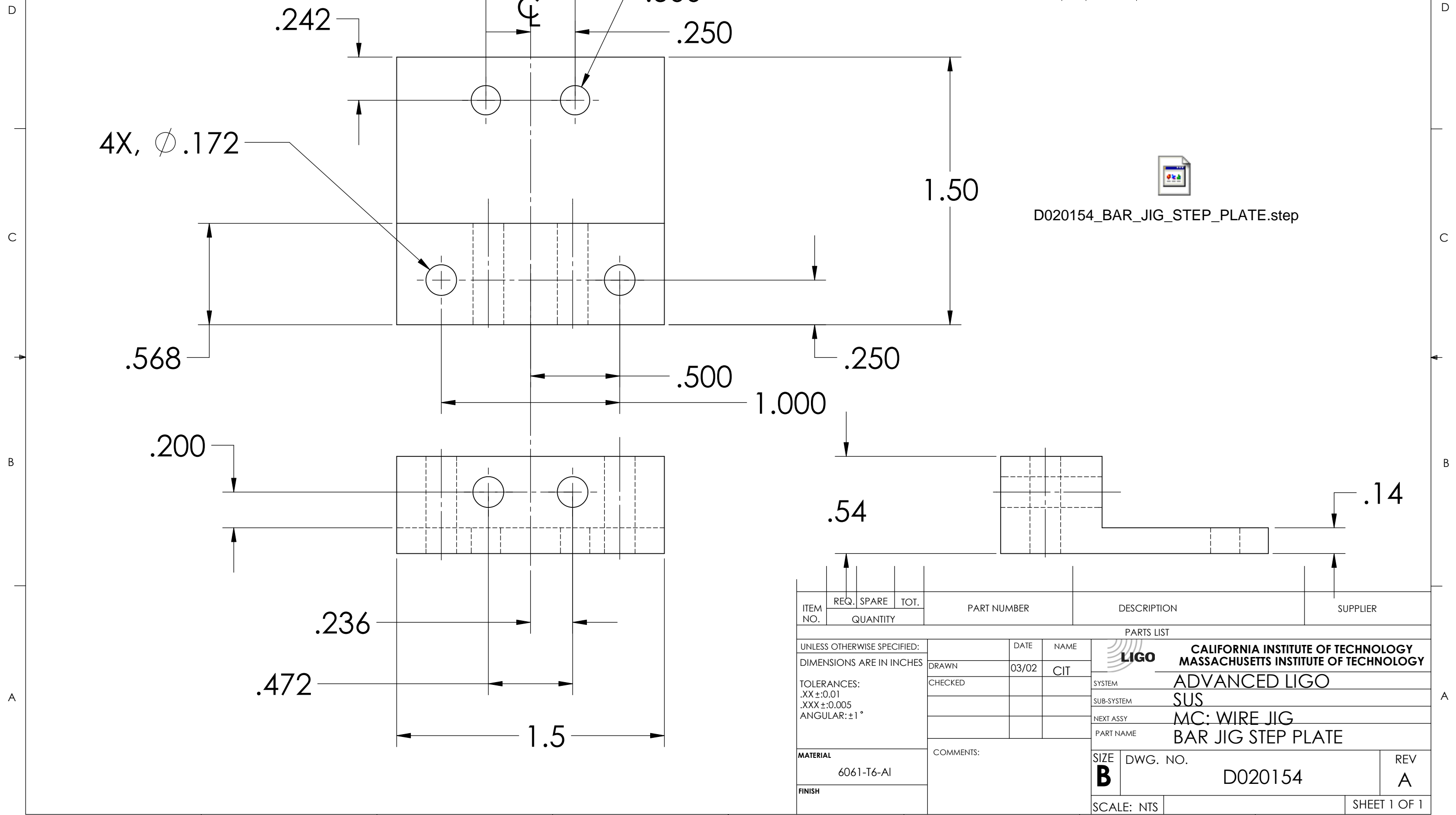



NOTES: (UNLESS OTHERWISE SPECIFIED)  
 1. DIMENSIONS IN INCHES  
 2. REMOVE ALL SHARP EDGES, R.02 MIN  
 3. ALL MACHINING FLUIDS SHALL BE WATER SOLUBLE AND FREE OF SULFUR, CHLORINE AND SILICONE, SUCH AS CINCINNATI MILACRON'S CIMTECH 410 (STAINLESS STEEL)

REV.	DATE	DCN
A	24 JUNE 2004	E040303-00



D020154\_BAR\_JIG\_STEP\_PLATE.step

ITEM NO.	REQ.	SPARE	TOT.	PART NUMBER	DESCRIPTION	SUPPLIER
PARTS LIST						
UNLESS OTHERWISE SPECIFIED: DIMENSIONS ARE IN INCHES				DATE	NAME	 <b>CALIFORNIA INSTITUTE OF TECHNOLOGY          MASSACHUSETTS INSTITUTE OF TECHNOLOGY</b>
TOLERANCES: .XX ±0.01 .XXX ±0.005 ANGULAR: ±1°				03/02	CIT	
MATERIAL				COMMENTS:		SYSTEM
6061-T6-AL						SUB-SYSTEM
FINISH						NEXT ASSY
						PART NAME
						MC: WIRE JIG
						BAR JIG STEP PLATE
SCALE: NTS		DWG. NO.		REV		
		D020154		A		
					SHEET 1 OF 1	