

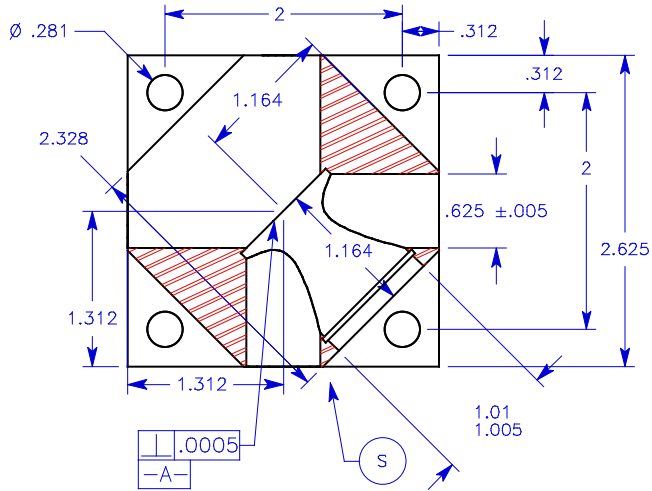
**D020021-00-D Solid 1" Mirror Mount, 40° J Kern**

Inspect as per ASME Y 14.5-1994

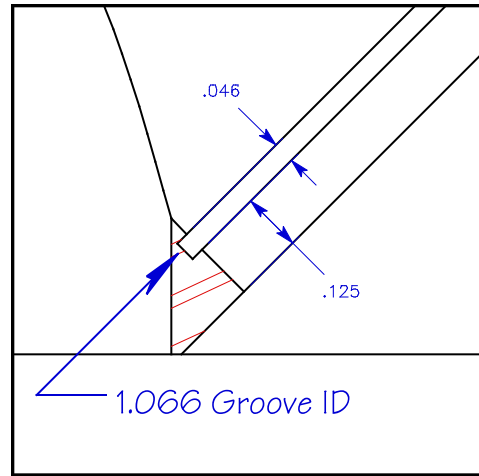
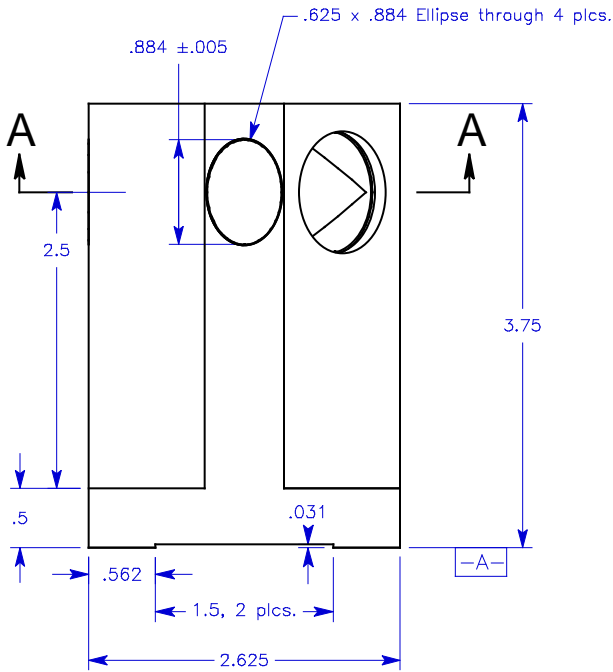
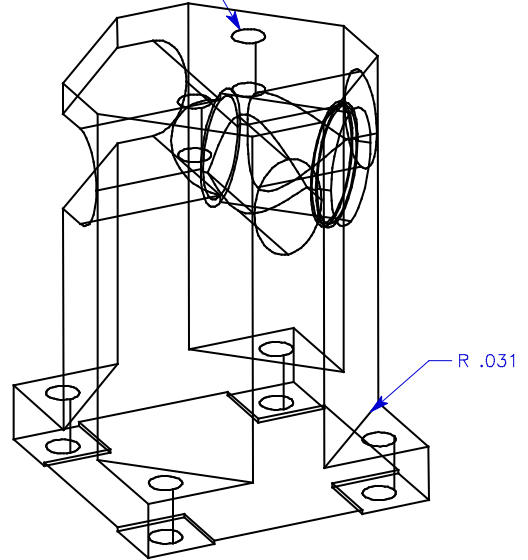
504-649-0602  
kineoptics.com  
joe@kineoptics.com

KineOptics  
120 Golden Pheasant Dr.  
Slidell, LA 70461

Section AA



1/4-20, .5 deep, 1.75 BC, 2 plcs.



Detail S

Material	6061 T6	Part Name	40 Degree Corner Block
Finish	32	Part Number	
All dimensions + - .003 unless noted.	Assembly		
	Date	4-4-2000	<b>6 EACH</b>