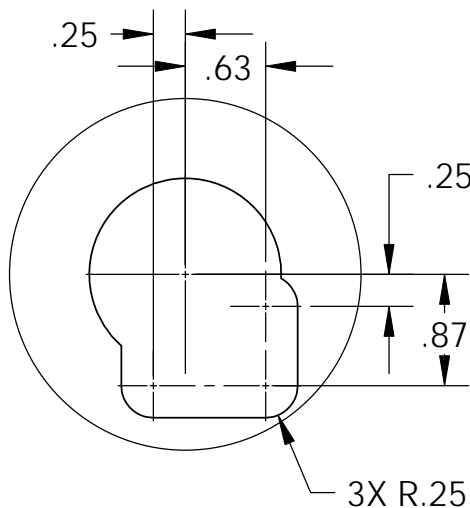


D020016_HEPI_actuator_bracket, PART PDM REV: X-013, DRAWING PDM REV: X-006

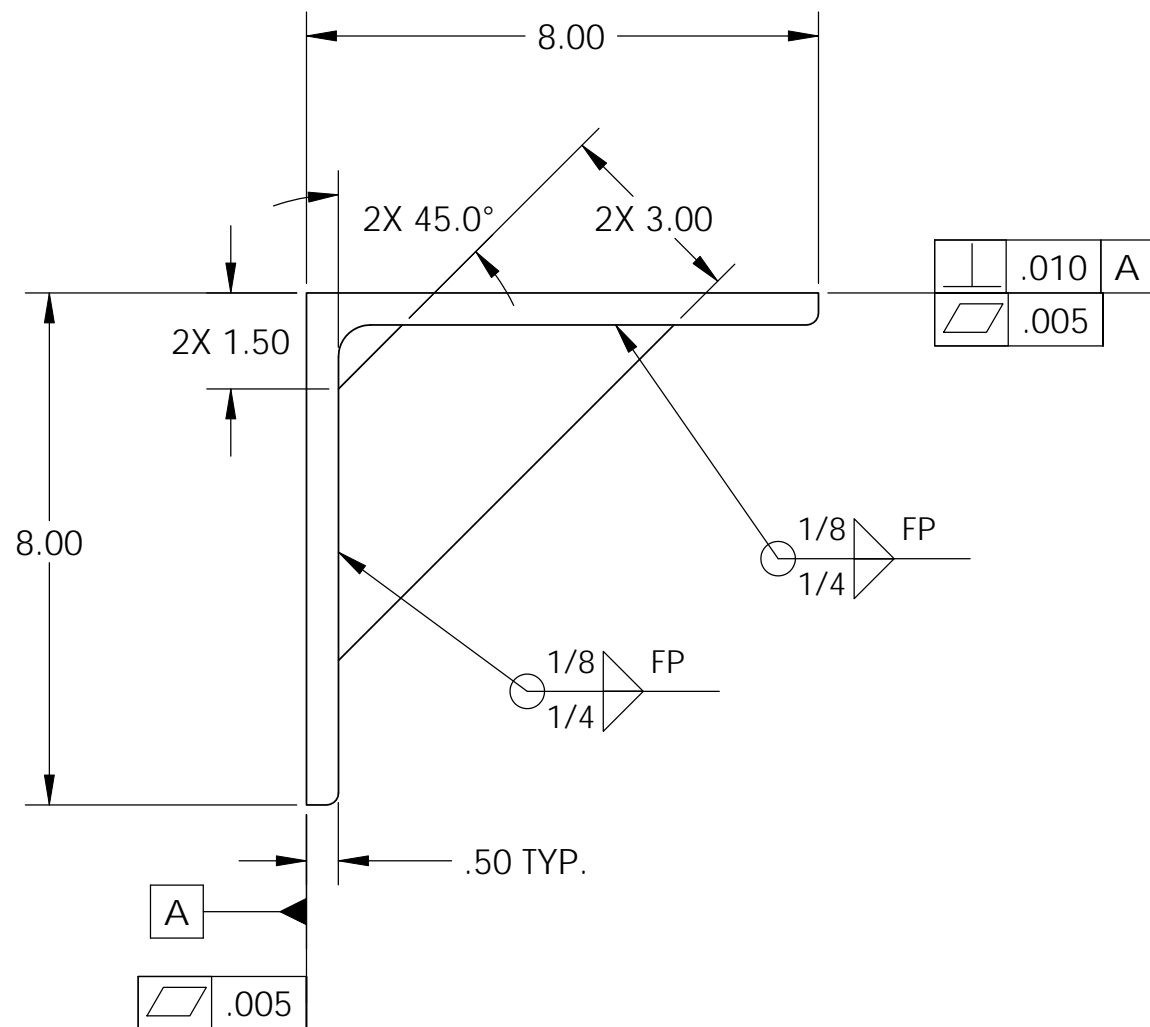
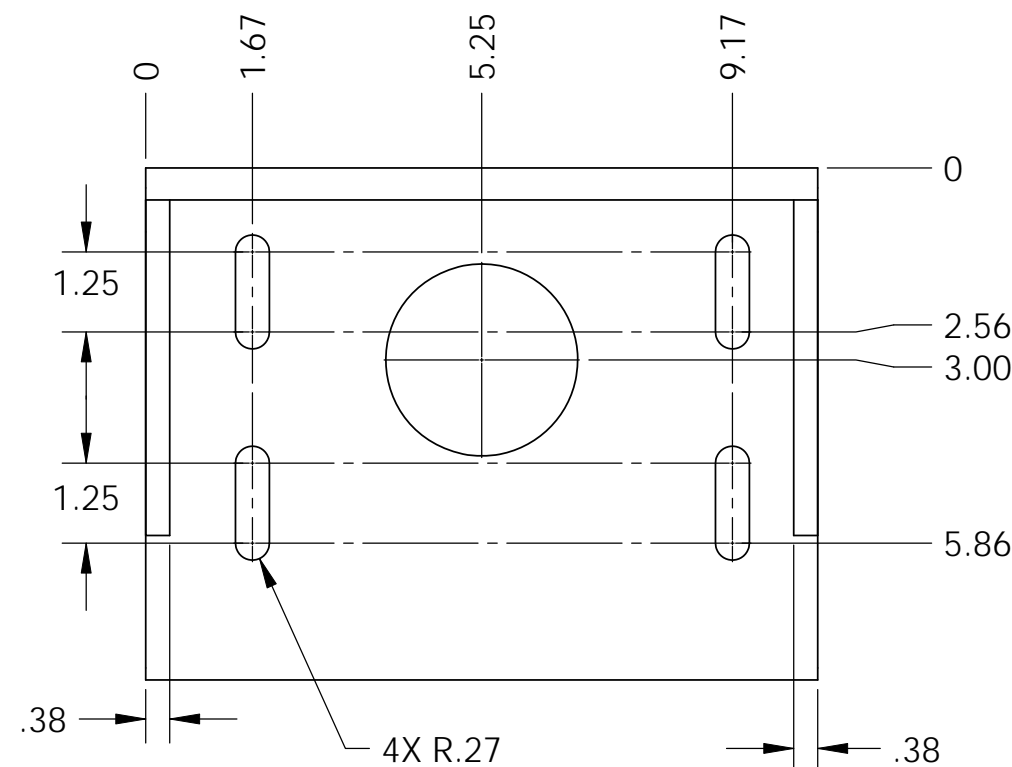
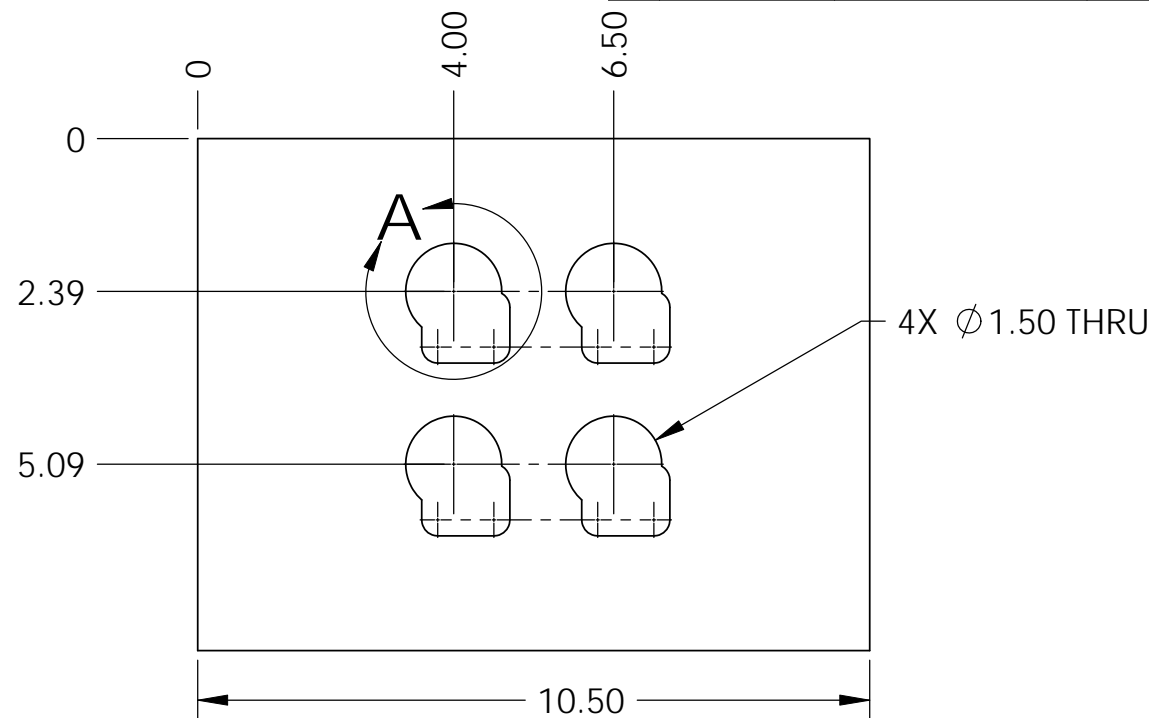
NOTES CONTINUED:

4. ALL MACHINING FLUIDS MUST BE FULLY SYNTHETIC, FULLY WATER SOLUBLE AND FREE OF SULFUR, SILICONE AND CHLORINE.
5. SCRIBE, ENGRAVE, OR MECHANICALLY STAMP (NO INKS OR DYES) DRAWING PART NUMBER, REVISION (AND VARIANT OR "TYPE" IF APPLICABLE ON NOTED SURFACE OF PART FOLLOWED ON THE NEXT LINE WITH A THREE DIGIT SERIAL NUMBER. SERIAL NUMBERS START AT 001 FOR THE FIRST ARTICLE AND PROCEED CONSECUTIVELY. USE MINIMUM 0.12 HIGH CHARACTERS, UNLESS THE SIZE OF THE PART DICTATES SMALLER CHARACTERS. A VIBRATORY TOOL MAY BE USED. EXAMPLE DXXXXXXX-VY, TYPE-XX, S/N XXX.
6. APPROXIMATE WEIGHT = 23.1 LB.
7. ALL PARTS SHALL BE MANUFACTURED IN ACCORDANCE WITH LIGO SPECIFICATION E0900364.
8. PAINT: ALL VISIBLE SURFACES (exclude fastening hardware) MEDIUM BLUE SHERWIN WILLIAMS (POLANE (R) T-PLUS POLYURETHANE ENAMEL) #SW-F63TX-L-2822-5864 PRIME WITH SHERWIN WILLIAMS INDUSTRIAL WASH PRIMER P60G2 "OXI SOLV RUST INHIBITOR" TO BE APPLIED PER MFG. INSTRUCTIONS TO ALL UNPAINTED SURFACES. BOTH TAPPED AND THRU HOLES WILL BE PLUGGED DURING APPLICATION.

REV.	DATE	DCN #	DRAWING TREE #
v1	21 Feb. 2011	E1100119	E1100016
v2	15 Mar. 2011	E1100253	E1100016



4X
DETAIL A
SCALE 2 : 3



NOTES AND TOLERANCES: (UNLESS OTHERWISE SPECIFIED)				LIGO		PART NAME	
DIMENSIONS ARE IN		1. INTERPRET DRAWING PER ASME Y14.5-1994.		CALIFORNIA INSTITUTE OF TECHNOLOGY		Horizontal Angle Mount Hydraulic Isolator	
TOLERANCES:		2. REMOVE ALL SHARP EDGES, .03 x 45°.		MASSACHUSETTS INSTITUTE OF TECHNOLOGY			
.XX ±		3. DO NOT SCALE FROM DRAWING.		SYSTEM	SUB-SYSTEM	DESIGNER	SIZE
.XXX ±				ADVANCED LIGO	SEI	M.HAMMOND	DWG. NO.
ANGULAR ± °				NEXT ASSY		M.HILLARD	B
		MATERIAL				M.HAMMOND	D020016
		ASTM A36 Steel				K.MASON	v2
		FINISH					SCALE: 1:3
		63 μinch					PROJECTION:
							⊕
							SHEET 1 OF 1