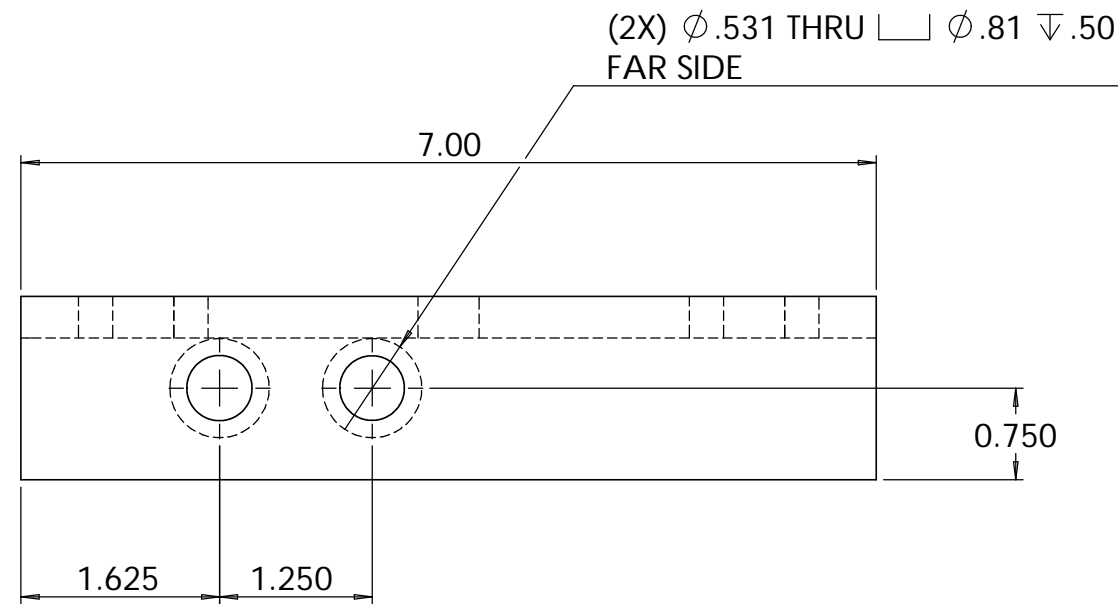
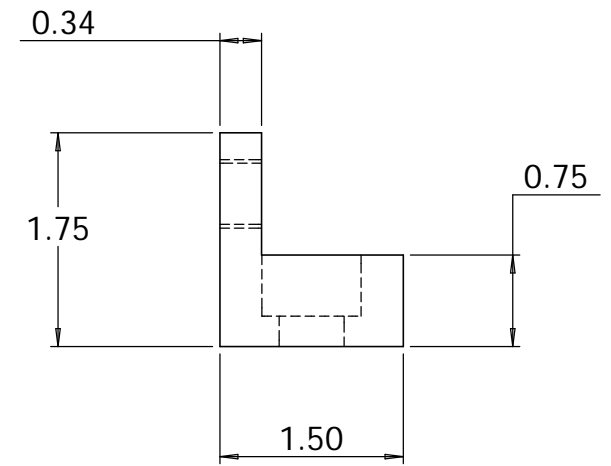
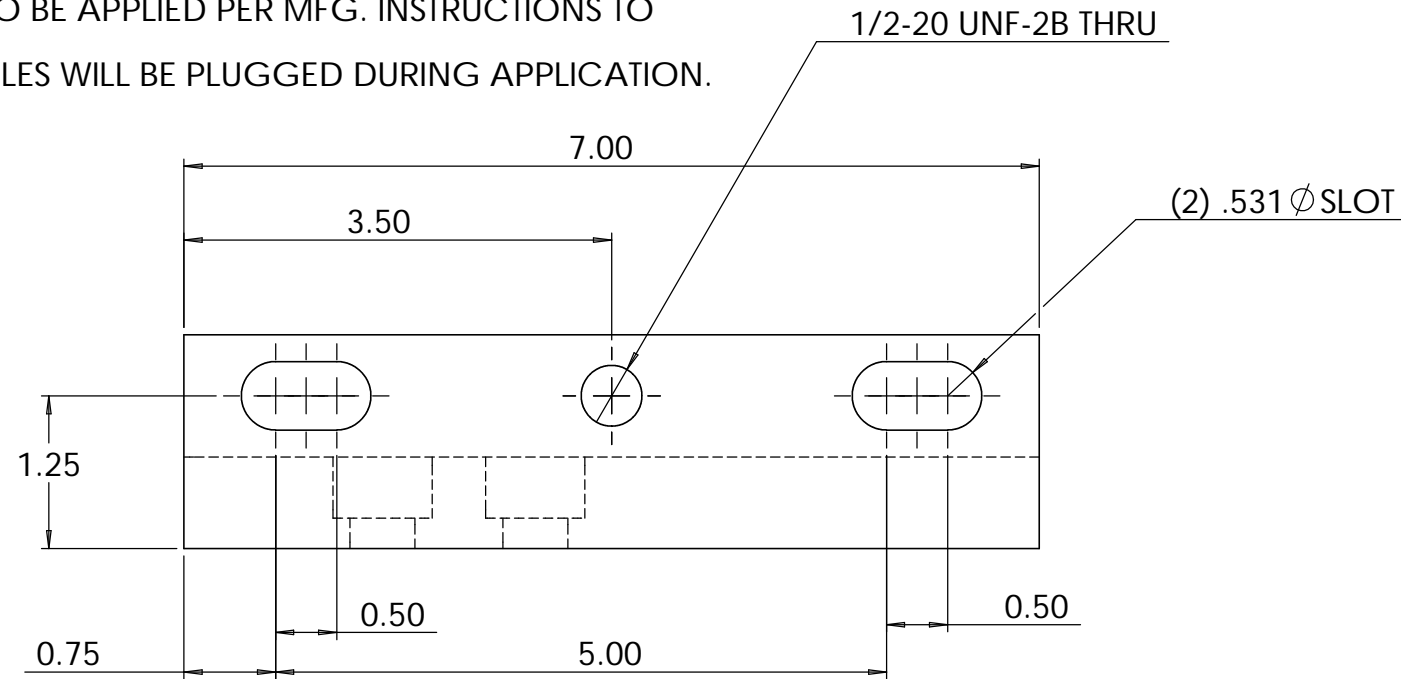


- NOTES: UNLESS OTHERWISE SPECIFIED
1. REMOVE ALL BURRS AND BREAK SHARP EDGES TO A MAXIMUM OF .015
  2. PART NUMBER (DRAWING NO., DASH NO., REVISION NO., SERIAL NO.) TO BE CLEARLY MARKED ON THE PART ITSELF
  3. PAINT:  
ALL VISIBLE SURFACES  
MEDIUM BLUE SHERWIN WILLIAMS (POLANE (R) T-PLUS POLYURETHANE ENAMEL) #SW-F63TX-L-2822-5864  
PRIME WITH SHERWIN WILLIAMS INDUSTRIAL WASH PRIMER P60G2
  4. "OXI SOLV RUST INHIBITOR" TO BE APPLIED PER MFG. INSTRUCTIONS TO ALL UNPAINTED SURFACES.  
BOTH TAPPED AND THRU HOLES WILL BE PLUGGED DURING APPLICATION.

REVISIONS			
REV.	DESCRIPTION	DATE	APPROVED



**SolidWorks Educational License**  
**Instructional Use Only**

UNLESS OTHERWISE SPECIFIED DIMENSIONS ARE IN INCHES TOLERANCES ARE: DECIMALS ANGLES .X $\pm$ .06 .XX $\pm$ .01 $\pm$ 1 .XXX $\pm$ .005	CAD GENERATED DRAWING, DO NOT MANUALLY UPDATE		CALIFORNIA INSTITUTE OF TECHNOLOGY MASSACHUSETTS INSTITUTE OF TECHNOLOGY
	APPROVALS DRAWN D. MASON CHECKED K. MASON	DATE 1/9/02 1/9/02	
	MATERIAL 1018 CRS	RESP ENG	SIZE B
	FINISH SEE NOTES	MFG ENG	DWG. NO. D020015-A-D
DO NOT SCALE DRAWING	QVAL ENG	SCALE 1:1.5 CAD FILE: D020014-A.SLDDRW	SHEET 1 OF 1