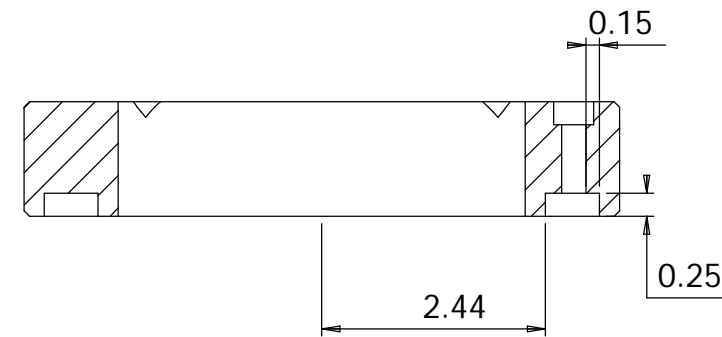
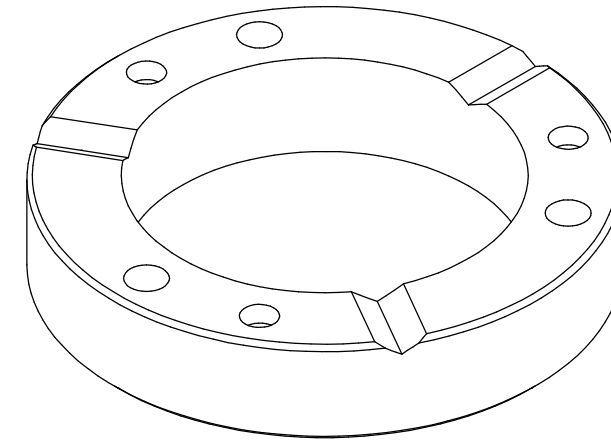
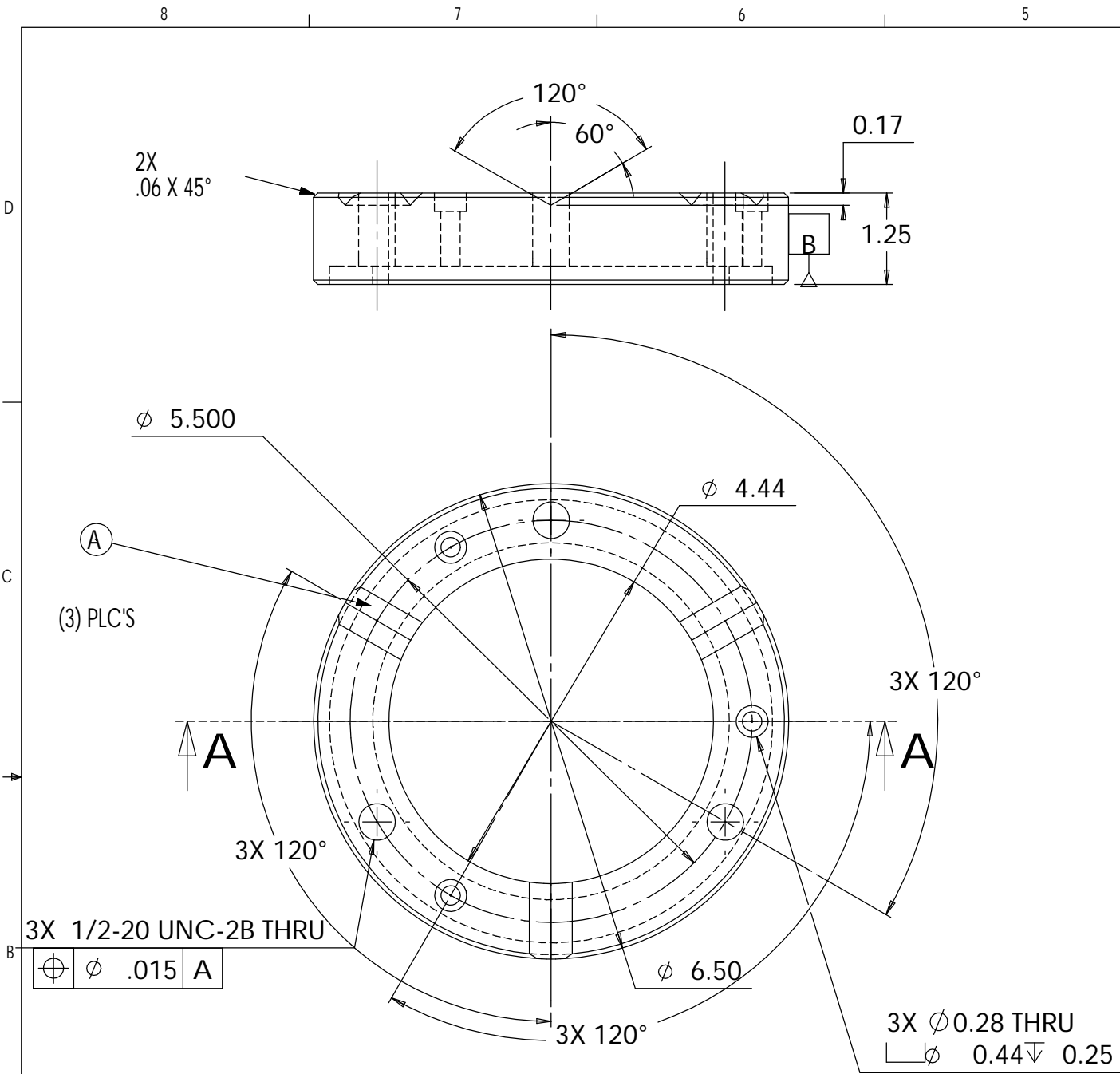


REVISIONS				
REV.	DCN	DESCRIPTION	DATE	APPR.



SECTION A-A

NOTES: UNLESS OTHERWISE SPECIFIED

1. MATERIAL TO BE GRADE O1 OIL-HARDENING STEEL
2. HARDENED TO 59 HRC
3. REMOVE ALL BURRS AND BREAK SHARP EDGES TO A MAXIMUM OF .015
4. PART NUMBER (DRAWING NO., DASH NO., REVISION NO., SERIAL NO.) TO BE CLEARLY MARKED ON THE PART ITSELF
5. PAINT:  
ALL VISIBLE SURFACES  
MASK GROOVE SURFACES A, TAPPED AND THRU HOLES.  
MEDIUM BLUE SHERWIN WILLIAMS (POLANE (R) T-PLUS),  
POLYURETHANE ENAMEL.) #SW-F63TX-L-2822-5864.  
PRIME WITH SHERWIN WILLIAMS INDUSTRIAL WASH PRIMER P60G2.
6. OXI SOLV RUST INHIBITOR TO BE APPLIED PER MFG. INSTRUCTIONS TO ALL UNPAINTED SURFACES.  
BOTH TAPPED AND THRU BOLT HOLES WILL BE PLUGGED DURING APPLICATION.

UNLESS OTHERWISE SPECIFIED DIMENSIONS ARE IN INCHES TOLERANCES ARE:	
DECIMALS .X±.06 .XX±.01 .XXX±.005	ANGLES
MATERIAL SEE NOTE 1	FINISH SEE NOTE 5
DO NOT SCALE DRAWING	

APPROVALS	DATE
DRAWN D. MASON	1/3/02
CHECKED K. MASON	1/3/02
SCALE 1:2	SIZE B

CALIFORNIA INSTITUTE OF TECHNOLOGY  
MASSACHUSETTS INSTITUTE OF TECHNOLOGY

SPRING ADJUSTMENT PLATE  
PRE-ISOLATOR

DWG. NO.	D020001-A-D	REV. A
CAD FILE:	D020001-A.SLDDRW	SHEET 1 OF 1