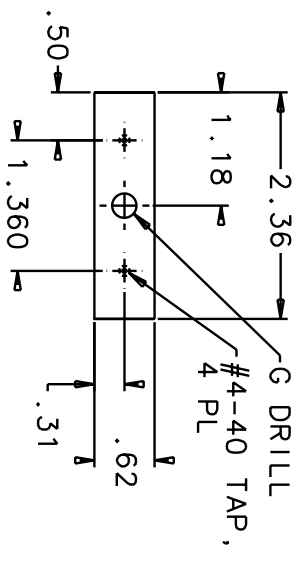
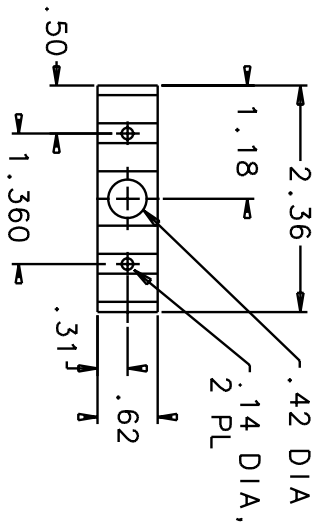


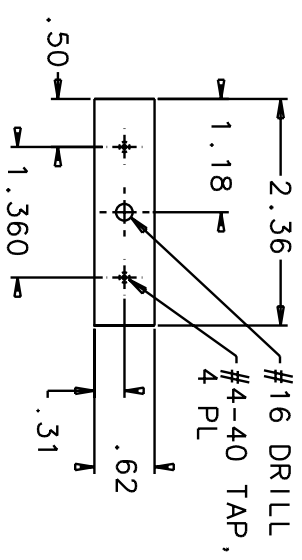
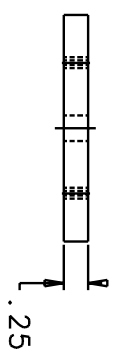
G DRILL
#4-40 TAP,
4 PL



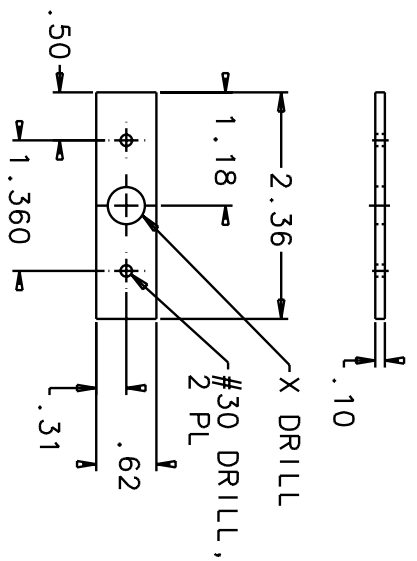
-1 BASE L
MAT'L.: 6061-T6
ALUMINUM



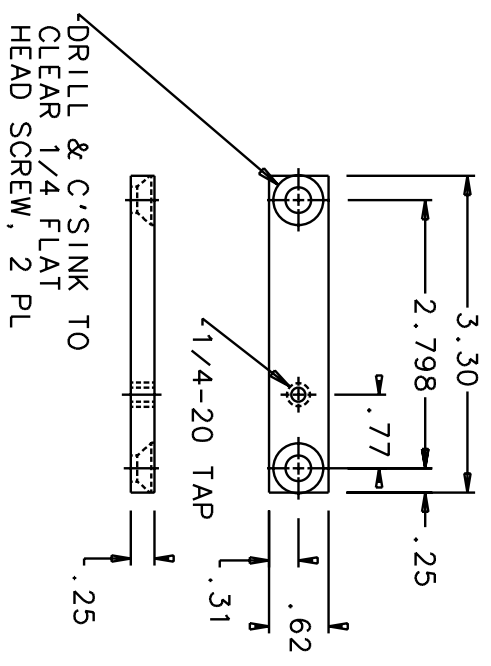
-2 LINER
MAT'L.: FLOUREL ELASTOMER
PER LIGO SPEC. E970130
(MAKE FROM D010120-2 LINER)
TOLERANCES: THE GREATER OF
RMA CLASS A2 OR THOSE
SHOWN BELOW



-3 BASE S
MAT'L.: 6061-T6
ALUMINUM



-4 BAR
MAT'L.: 6061-T6
ALUMINUM



-5 ADAPTER
MAT'L.: 6061-T6
ALUMINUM

DRILL & C'SINK TO
CLEAR 1/4 FLAT
HEAD SCREW, 2 PL

ALL DIMENSIONS
ARE IN INCHES.

TOLERANCES, EXCEPT
AS SHOWN:

X.XXX: +/- 0.005"
X.XX: +/- 0.01"

D010192-A
CABLE CLAMPS "B", 40M
LIGO PROJECT
L. JONES
9/5/01