

1

2

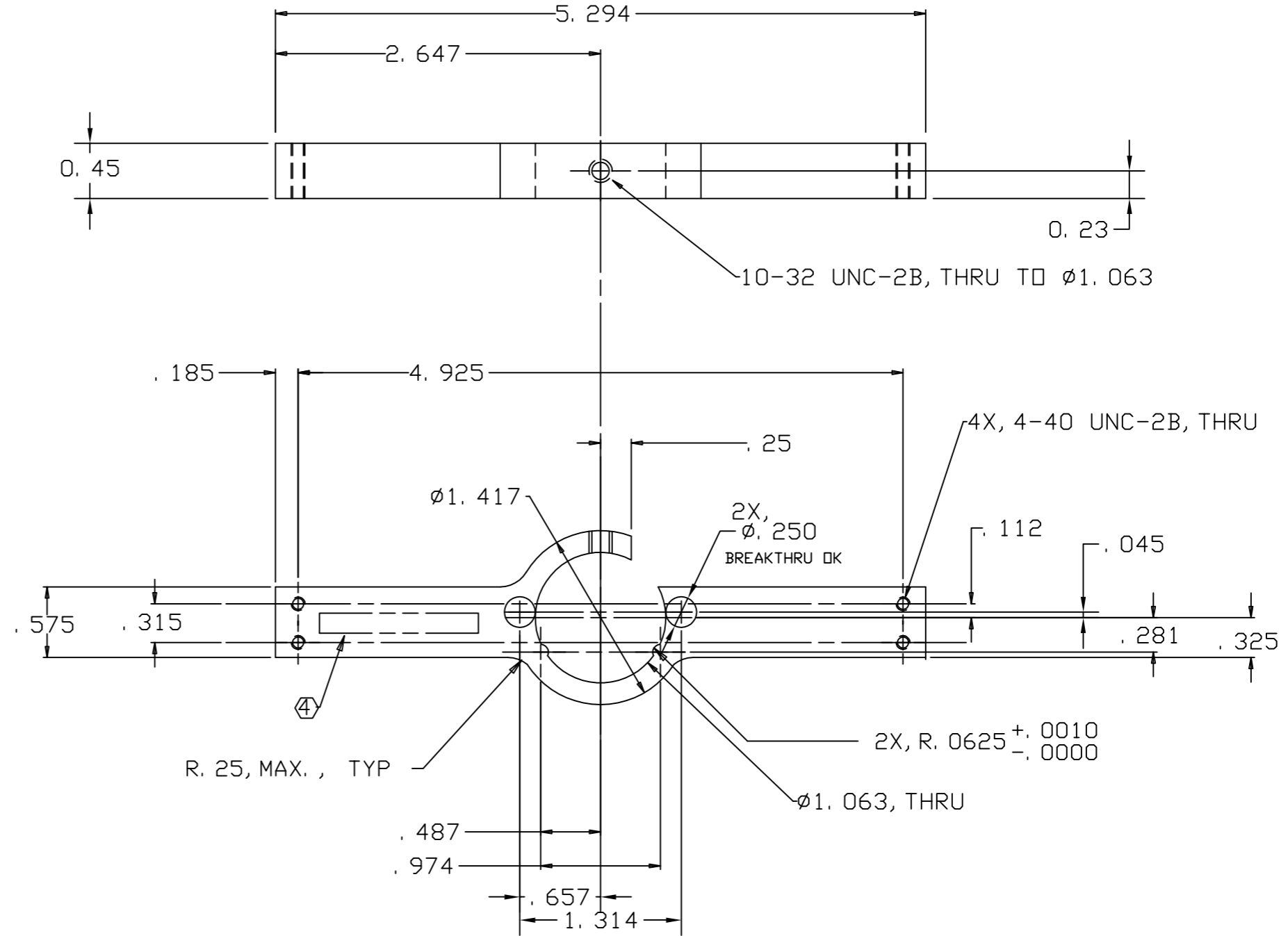
3

4

NOTES: (UNLESS OTHERWISE SPECIFIED)

1. DIMENSIONS IN INCHES.
2. BREAK ALL SHARP EDGES.
3. ALL MACHINING FLUIDS SHALL BE WATER SOLUABLE AND FREE OF SULFUR, CHLORINE AND SILICONE, SUCH AS CINCINNATI MILACRON'S CIMTECH 410 (STAINLESS STEEL.)
4. ETCH OR STAMP THE DRAWING PART NUMBER ON NOTED SURFACE OF PART AND THEN A THREE DIGIT SERIAL NUMBER. SERIAL NUMBERS START AT 001 FOR THE FIRST PART AND PROCEED CONSEQUETIVELY. USE .07" HIGH CHARACTERS. EXAMPLE: D010173-A 001

REV	DATE	DRAWN BY	CHECKED	DCC	DCN/DESCRIPTION
A	9/5/01	J. Romie			E010162/INITIAL RELEASE
B	10/25/02	J. Romie			E020998/REDUCE WIDTH, ADD HOLES



UNLESS OTHERWISE SPECIFIED
DIMENSIONS ARE IN INCHES
TOLERANCES ARE:
FRACTIONS DECIMALS
0. XX=±0.01
0. XXX=±0.005
ANGLES=±0.5°
DO NOT SCALE DRAWING

APPROVALS		DATE
DRAWN	J. ROMIE	9/01
CHECKED		

LIGO CALIFORNIA INSTITUTE OF TECHNOLOGY
MASSACHUSETTS INSTITUTE OF TECHNOLOGY
TITLE
40m TM
HEAD HOLDER, SIDE
DVG NO. D010173
REV B

NEXT ASSEMBLY D010163
MATERIAL 300 SERIES SST
FINISH
FILE LOCATION /home/dcc/docs/D010173.pdf

SCALE 1/1 SHEET 1 OF 1

1

2

3

4