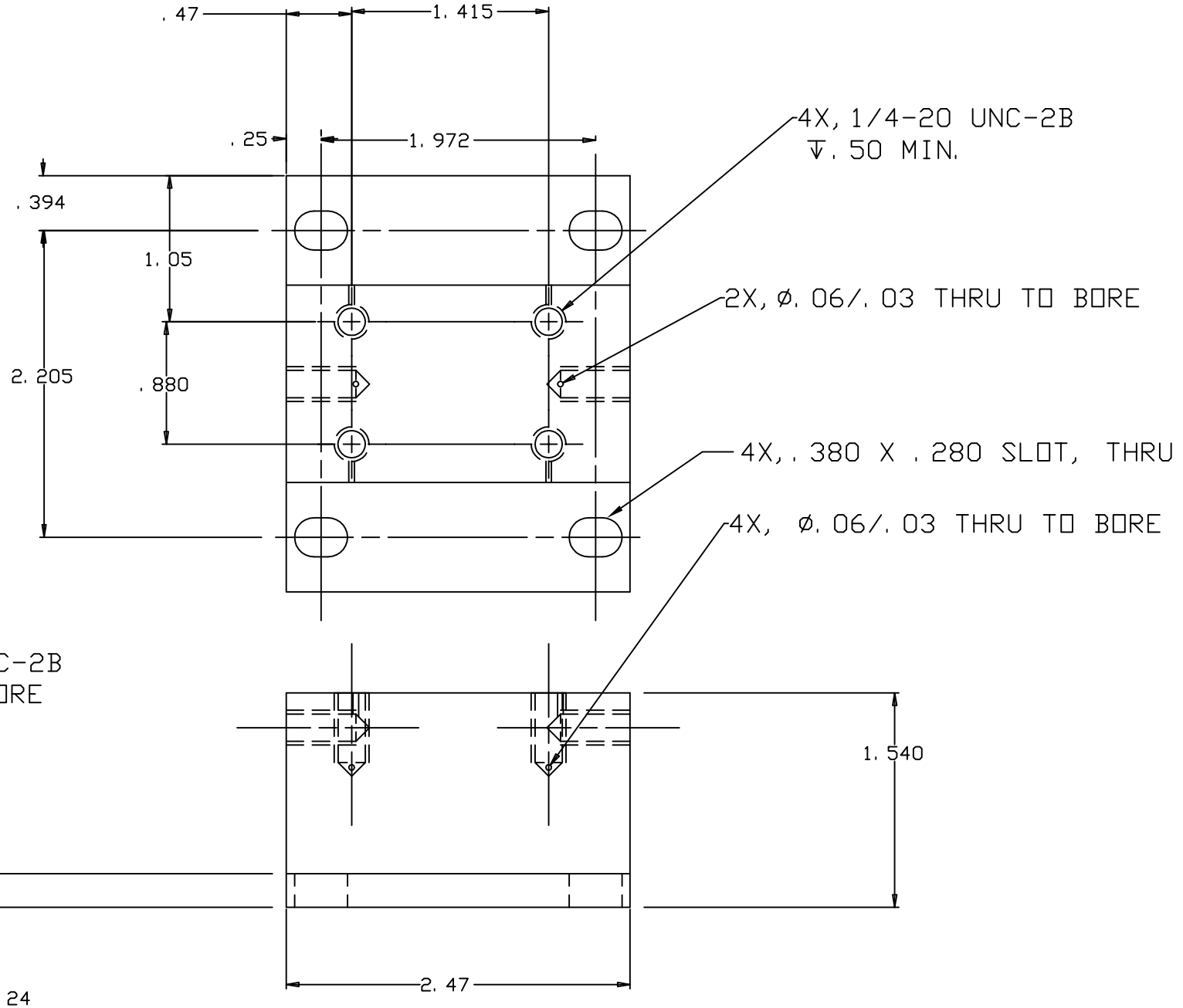
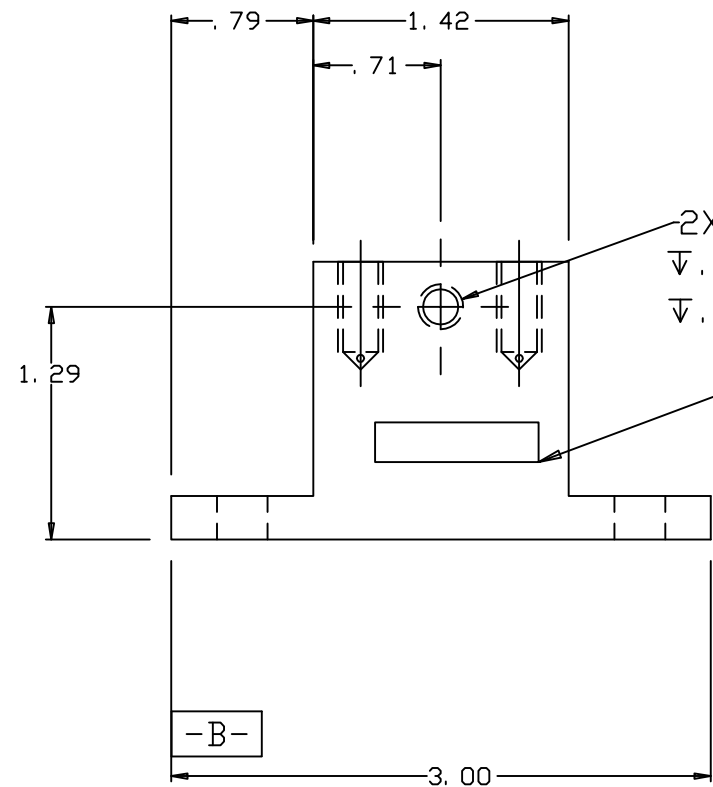


NOTES: (UNLESS OTHERWISE SPECIFIED)

1. DIMENSIONS IN INCHES.
 2. BREAK ALL SHARP EDGES.
 3. ALL MACHINING FLUIDS SHALL BE WATER SOLUABLE AND FREE OF SULFUR, CHLORINE AND SILICONE, SUCH AS CINCINNATI MILACRON'S CIMTECH 410 (STAINLESS STEEL.)
- ④ ETCH OR STAMP THE DRAWING PART NUMBER ON NOTED SURFACE OF PART AND THEN A THREE DIGIT SERIAL NUMBER. SERIAL NUMBERS START AT 001 FOR THE FIRST PART AND PROCEED CONSEQUETIVELY. USE .07" HIGH CHARACTERS. EXAMPLE: D010165-A 001

REV	DATE	DRAWN BY	CHECKED	DCC	DCN/DESCRIPTION
A	8/31/01	J. Romie			E010162/INITIAL RELEASE
B	10/25/02	J. Romie			E020998/SLOTS FOR MOUNTING



QTY REQD	FSCM NO	PART OR IDENTIFYING NO	NOMENCLATURE OR DESCRIPTION	MATERIAL SPECIFICATION	ITEM NO
PARTS LIST					
UNLESS OTHERWISE SPECIFIED DIMENSIONS ARE IN INCHES TOLERANCES ARE:			APPROVALS		
FRACTIONS			DRAWN J. ROMIE		
DECIMALS			CHECKED		
0. XX=±0.01			DATE 8/01		
0. XXX=±0.005			TITLE		
ANGLES=±0.5°			LIGO CALIFORNIA INSTITUTE OF TECHNOLOGY		
DO NOT SCALE DRAWING			40m TM		
NEXT ASSEMBLY D010163			SAFETY CAGE BASE		
MATERIAL ALUM 6061-T6			DNG NO. D010165		
FINISH			SCALE 1/1		
FILE LOCATION /home/dcc/docs/D010165.pdf			SHEET 1 OF 1		
			REV B		