

1

2

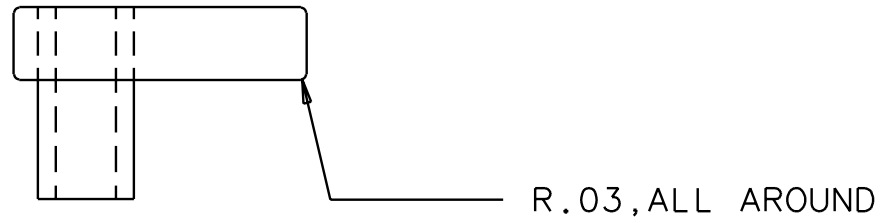
3

4

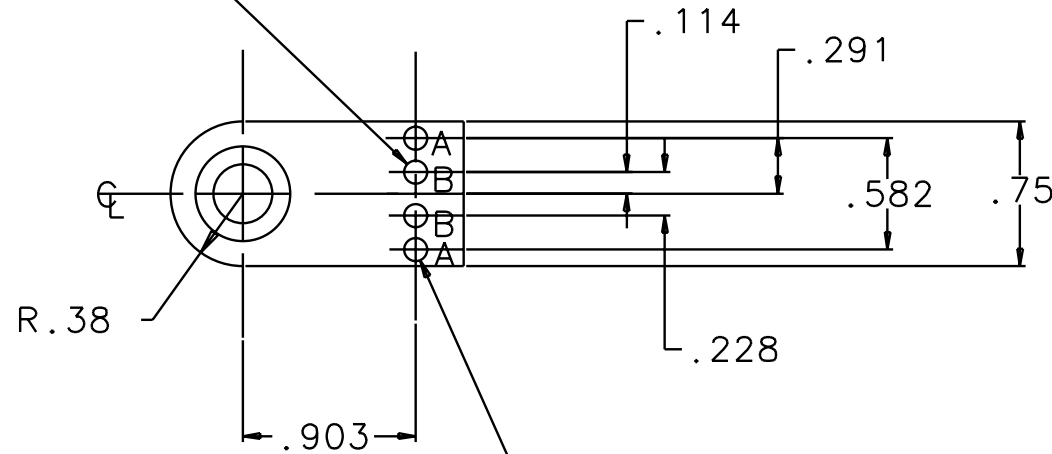
NOTES: (UNLESS OTHERWISE SPECIFIED)

- 1. DIMENSIONS IN INCHES.
- 2. REMOVE ALL SHARP EDGES.
- 3. ENGRAVE OR ETCH PART WITH DRAWING NUMBER.

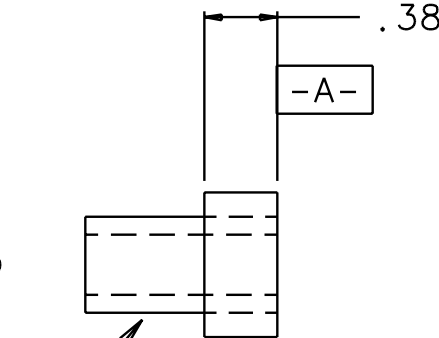
REV	DATE	DRAWN BY	CHECKED	DCC	DCN/DESCRIPTION
A	8-15-01	J.Romie			E010154/INITIAL RELEASE



2X, ϕ .125, LABELED B



2X, ϕ .1268 $^{+.0005}_{-.0000}$
LABELED A



6X, PRESS FIT PRECISION
 DRILL BUSHING
 5/16" ID, 1/2" OD, 1.00" LONG
 MATERIAL: BRASS OR 300 SST
 ID TOL. = $^{+.0001}_{-.0005}$ "

\perp	.001	A
---------	------	---

QTY REQD	FSCM NO	PART OR IDENTIFYING NO	NOMENCLATURE OR DESCRIPTION	MATERIAL SPECIFICATION	ITEM NO
PARTS LIST					
UNLESS OTHERWISE SPECIFIED DIMENSIONS ARE IN INCHES TOLERANCES ARE: FRACTIONS DECIMALS 0.XX = ± 0.01 0.XXX = ± 0.002 ANGLES = $\pm 0.5^\circ$ DO NOT SCALE DRAWING			APPROVALS DRAWN J. Romie CHECKED	DATE 8/01	LIGO CALIFORNIA INSTITUTE OF TECHNOLOGY MASSACHUSETTS INSTITUTE OF TECHNOLOGY TITLE LEFT SIDE BLOCK FOR 40M SRM, MCC & MCF2
NEXT ASSEMBLY D010131			MATERIAL ALUM 6061-T6	FINISH NONE	
FILE LOCATION /home/dcc/docs/D010125.pdf			SCALE 1/1		SHEET 1 OF 1

1

2

3

4