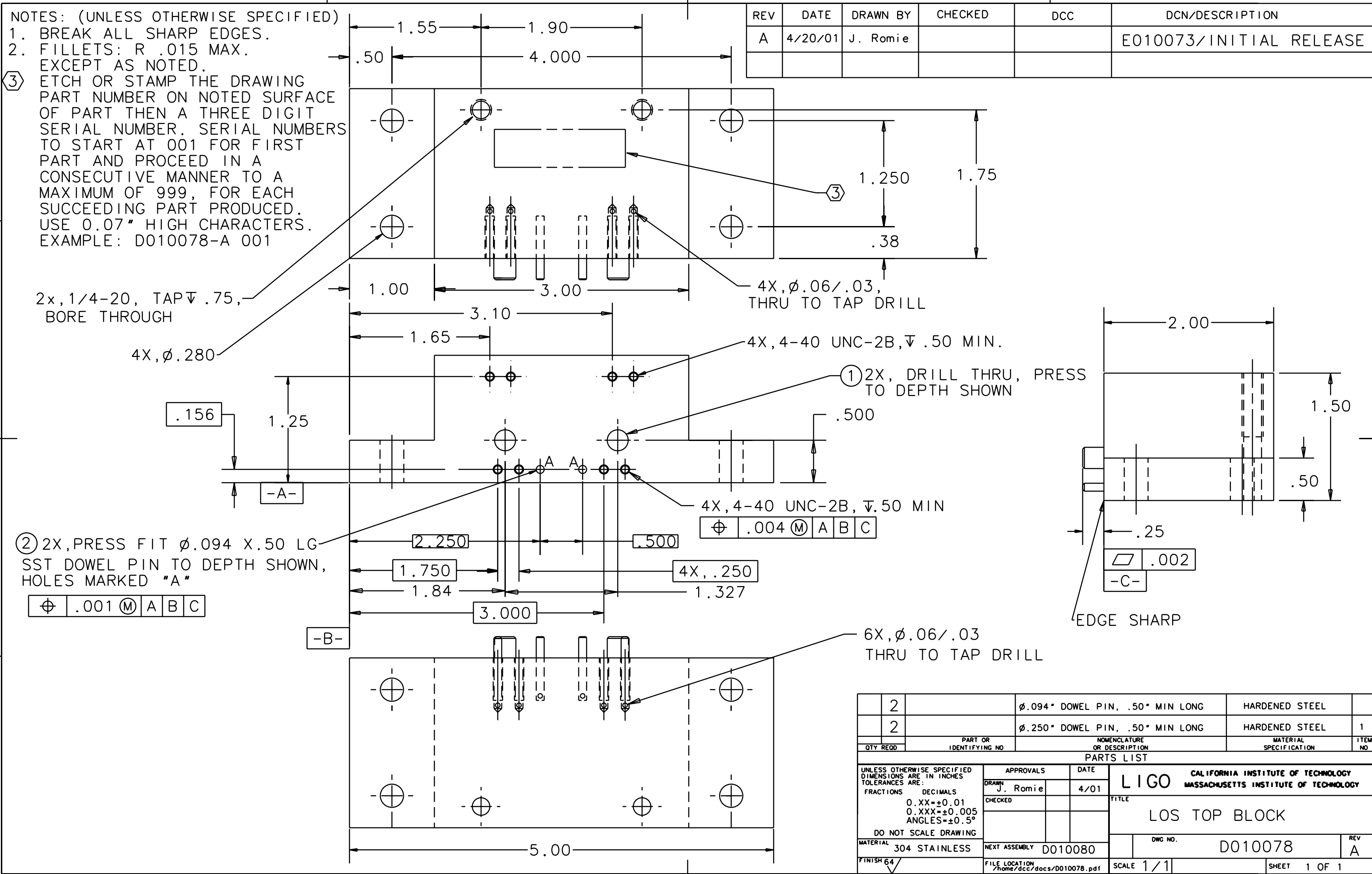


NOTES: (UNLESS OTHERWISE SPECIFIED)
 1. BREAK ALL SHARP EDGES.
 2. FILLETS: R .015 MAX.
 EXCEPT AS NOTED.
 ③ ETCH OR STAMP THE DRAWING PART NUMBER ON NOTED SURFACE OF PART THEN A THREE DIGIT SERIAL NUMBER. SERIAL NUMBERS TO START AT 001 FOR FIRST PART AND PROCEED IN A CONSECUTIVE MANNER TO A MAXIMUM OF 999, FOR EACH SUCCEEDING PART PRODUCED. USE 0.07" HIGH CHARACTERS. EXAMPLE: D010078-A 001

REV	DATE	DRAWN BY	CHECKED	DCC	DCN/DESCRIPTION
A	4/20/01	J. Romie			E010073/INITIAL RELEASE



QTY REQD	PART OR IDENTIFYING NO	NOMENCLATURE OR DESCRIPTION	MATERIAL SPECIFICATION	ITEM NO
2		ϕ .094" DOWEL PIN, .50" MIN LONG	HARDENED STEEL	
2		ϕ .250" DOWEL PIN, .50" MIN LONG	HARDENED STEEL	1

PARTS LIST

UNLESS OTHERWISE SPECIFIED DIMENSIONS ARE IN INCHES TOLERANCES ARE: FRACTIONS DECIMALS 0.XX \pm 0.01 0.XXX \pm 0.005 ANGLES \pm 0.5° DO NOT SCALE DRAWING	APPROVALS DRAWN J. Romie CHECKED	DATE 4/01	CALIFORNIA INSTITUTE OF TECHNOLOGY MASSACHUSETTS INSTITUTE OF TECHNOLOGY	
MATERIAL 304 STAINLESS	NEXT ASSEMBLY D010080		TITLE LOS TOP BLOCK	
FINISH 64	FILE LOCATION /home/dcc/docs/D010078.pdf	SCALE 1/1	DWG NO. D010078	REV A

SHEET 1 OF 1